

# *The Parish Magazine*

*St John-in-Bedwardine*

*St Michael's*



THE CHURCH  
OF ENGLAND



May 2022

50p



## Information

### WORCESTER CITY WEST TEAM CLERGY

**clergy@wcw.church**

Day off

The Reverend PHIL BRADFORD (01905 423794)

Friday

The Reverend SARAH COTTRILL (01905 426257)

Saturday

### TEAM OFFICE

You can contact the office by email, post or telephone.		The office is open Wednesday and Friday 9am-12noon.
Postal address: 1a Bromyard Road St John's, WR2 5BS	Tel: (01905) 420490 e-mail: office@wcw.church	

### ON THE WEB

St John's	Parish Website: <a href="http://www.stjohninbedwardine.co.uk">www.stjohninbedwardine.co.uk</a> A church near you: <a href="http://www.achurchnearyou.com/church/18634/">www.achurchnearyou.com/church/18634/</a> Facebook: <a href="http://www.facebook.com/stjohninbedwardine">www.facebook.com/stjohninbedwardine</a>
St Michael's	Parish Website and A church near you: } <a href="http://www.achurchnearyou.com/church/19689/">www.achurchnearyou.com/church/19689/</a> Facebook: <a href="http://www.facebook.com/stmichaelsdinesgreen/">www.facebook.com/stmichaelsdinesgreen/</a>

### SERVICES

Please check our websites and Facebook pages, or the notices published on the church noticeboards and printed in the magazine and weekly pew sheets.

### SAFEGUARDING

If you have any concerns about possible abuse of a child or vulnerable adult, please contact the PCC Safeguarding Representatives shown below.

Churchwardens: stjohns.churchwardens@wcw.church Gordon Templeton (749025), Joy Job (423051).	<b>St John's</b>
Pastoral care: The church's Pastoral Care Group offers support if you are lonely, bereaved, or unable to attend church. Please contact Sylvia Render (telephone 422654/email sylvia.render@talktalk.net).	
Safeguarding: Jane Askew (01905 424811) or any member of the clergy.	
The church of St John-in-Bedwardine is a registered charity, number 1152583.	
Churchwardens: Mike Dowling (dowlingm28@sky.com/424539), Val Mason (val.mason@yahoo.com/428948).	<b>St Michael's</b>
Safeguarding Officer: Liz Edwards (stmichaels.safeguarding@wcw.church) On Site Safeguarding Officer: Mike Dowling (details above).	

## *A Word from the Editors*

Welcome to our May edition. Our theme for this month is “Rogation”. In her letter, Sarah explains what it is all about, and what it should mean for us. Our cover picks up her note that Rogation Sunday is traditionally when the church prays particularly for God’s blessing on agriculture and industry.

As we write, the Russian invasion of Ukraine continues, with the regular reports of atrocities against Ukrainian civilians, and the sad stories of those forced to flee. On page 20 we have a prayer for Ukraine and, on the following pages, reports of events and work to support those afflicted.

We have plenty of future events (see especially pages 7 to 9), while in the church’s year, we are building up to Ascension Day, and we offer you the collect for that day:

*Grant, we pray, almighty God,  
that as we believe your only begotten Son our Lord  
Jesus Christ  
to have ascended into the heavens,  
so we in heart and mind may also ascend  
and with him continually dwell;  
who is alive and reigns with you,  
in the unity of the Holy Spirit,  
one God, now and for ever.*

*Graham and Sue Evans*

---

## *Important information*

**Email address:** parishmagazine@wcv.church

**Next edition (June):** Deadline is Sunday 8th May. Distribution, towards the end of May.

**Subscription form:** Page 50.

**Cover picture:** Bountiful crops by Colin Nash.

**Pictures in this magazine:** Our thanks to those who provided photographs for this magazine including Rachel Cramp, Sarah Cottrill, Paul Fulbrook, Ellen Little, Joy Job, Arthur Miller, Colin Nash and Tracey Ward.

## **The magazine**

We publish a Parish Magazine each month, except August.

Articles on all aspects of Christian and parish life, letters, jokes and anecdotes are welcome - do contribute if you can. If you have a story to tell, please make contact. Do include your name as anonymous contributions will not be considered. If you can, please use e-mail (address below left). The editors will always acknowledge items sent by email; please try again if you do not receive a response. Please send all written correspondence for the magazine to the Parish Office.

The magazine costs 50p to purchase and can be obtained from the back of church. Subscriptions are available at the discounted price of £5 per year; by subscribing you make things easier for our printing team as we know more closely how many copies to print.

You can subscribe by filling in the form on page 50 or by taking a subscription form from the rack (where the magazines are) at the back of the church. Please return the form and your payment to the parish office.

## **Opinions!**

Opinions expressed in this magazine are personal opinions of the authors concerned and may not represent the views of the editors, our PCCs or The Church of England. Such material is offered as a source of debate or reflection.

## **To advertise**

Please see page 14.

## *From Sarah Cottrill*

Growing up, as I did, in the semi-rural parish of Claines, Rogation Sunday was one on which we concentrated on agriculture, asking God's blessing on the land as we "beat the bounds." Most years this beating of the bounds only involved a small number of parishioners but one year an adventurous curate took it to a new level, using various forms of transport for different parts of the journey. A motorbike, tractor and even a canoe were pressed into service. This gave the parishioners some fun and remained a talking point for several years (as you can see by the fact that I still remember and want to write about it!).



But what is Rogation really all about?

The word "Rogation" comes from the Latin noun *rogatio*, meaning "asking." Rogation Sunday, falling on the fifth Sunday after Easter (or sixth Sunday of Easter) is one on which, traditionally, the church prays particularly for God's blessing on agriculture and industry. It is the last Sunday before Ascension Day and the three days between (Monday, Tuesday and Wednesday) are also Rogation Days which should be set aside for fasting and prayer.

The Episcopal Church's online dictionary (<https://www.episcopalchurch.org/glossary/>) tells us that *Rogation Days originated in Vienne, France, in the fifth century when Bishop Mamertus introduced days of fasting and prayer to ward off a threatened disaster. In England, they were associated with the blessing of the fields at planting. The vicar "beat the bounds" of the parish, processing around the fields reciting psalms and the litany. In the United States they have been associated with rural life and with agriculture and fishing.*

So, Rogation has come to be associated with a particular time – the time of year when farmers and gardeners are busy planting and generally preparing for what they hope will be a good harvest. If we return to the meaning of the word, however, we find that just about every day is a "Rogation Day" as few days pass without us asking God for something.

Recently our thoughts and prayers have focused very much on the situation in the Ukraine and alongside a great deal of practical action, many prayers have been offered up, asking God to intervene and bring peace back to that country and its



neighbours. Before that, our main focus was the Covid Pandemic with entreaties being made for the sick, for NHS workers and for the controlling of the virus. Before that, we probably concentrated on the issue of Brexit, with people praying for whichever outcome they preferred and, even more importantly, that whatever the result, it would not be the cause of trouble and disruption.

Setting aside these national and international issues, we each of us, in our daily lives, have our own individual concerns which we take to God, asking for his provision, his mercy, his guidance. We each have our own “Rogation Days” when these needs and concerns are particularly pressing. Perhaps we approach them, as true Rogation Days should be, with fasting and intense prayer. It may be that we are far less structured and disciplined, simply coming to God with a cry from our hearts. Whatever form our supplications take, it is right that we should take them to God. In his letter, St Peter wrote (1 Peter 5,7 (NRSV)): “Cast all your anxiety on him, because he cares for you.”<sup>2</sup>

There is, however, a “flip side” to asking – and that is thanking! When Jesus healed ten lepers, he expressed surprise and disappointment that only one returned to say thank you. (Luke 17, 11 – 19).

Rogation Sunday this year falls on May 22nd. Five months later, at the beginning of October, we will celebrate our Harvest Festivals, when we thank God for honouring the prayers offered at Rogationtide and blessing the efforts of those who provide us with our food and other necessities of life.

If we each have our individual “Rogations” - times when we make particular pleas for God’s help or blessing - then we must also remember to have our own times of thanksgiving, recognising when prayers have been answered, needs met, strength and comfort provided. The importance of matching asking with thanking, is implied in this prayer for Rogation Days (from ‘Rogation Days’ by Joshua Steele (<https://anglicancompass.com/rogation-days-a-rookie-anglican-guide/>))

Almighty God, Lord of heaven and earth.

We humbly pray that your gracious providence  
may give and preserve to our use the harvests of the land and of the seas,  
and may prosper all who labour to gather them,  
that we, who are constantly receiving good things from your hand,  
may always give you thanks;  
through Jesus Christ our Lord,  
who lives and reigns with you,  
in the unity of the Holy Spirit;  
One God, now and for ever. Amen.

*Sarah*

## *In Memoriam*

Nicholas James Carter	1 May 1990
Irene Haynes	1 May 2021
John Bertram Bentley	7 May 1988
Marie Antionette Grosvenor	11 May 2007
Marjorie Mantle	12 May 1988
Norman Jackson	12 May 1996
Christabel Lilly Page	14 May 1983
Lawrence Jack Perkins	14 May 1983
Colin Russell	15 May 2016
Ron Clayton	16 May 2016
Douglas Charles Haines	18 May 1989
Laura May Bircham	20 May 1989
Terry Sherratt	21 May 1992
May Barnes	22 May 1983
Ronald Arthur Barnes	22 May 1983
Herbert Heaven Williams	23 May 1993
Marjorie Victoria Davies	29 May 1995

Additions to In Memoriam are not automatic but must be specifically requested via the clergy.

In memoriam items are included until the fortieth anniversary.  
An extension may be requested by family or friends of those named.

## *From the Registers, March 2022*

### **St John's**

**FUNERALS:** *Rest eternal grant unto them O Lord*

No date of death given David Rodway

**SERVICES:** Communicants 239. Total attendance at all services 396, including 90 at a memorial service.

### **St Michael's**

**SERVICES:** Communicants 85. Total attendance at all services 100.

---

## *Sundays and Principal Feasts in May*

Sunday 1st: Third Sunday of Easter

Monday 2nd: Philip and James,  
apostles

Sunday 8th: Fourth Sunday of Easter

Saturday 14th: Matthias the apostle

Sunday 22nd: Fifth Sunday of Easter  
(Rogation Sunday)

Monday 23rd

to Wednesday 25th: Rogation Days

Thursday 26th: Ascension Day

Sunday 29th: Seventh Sunday of Easter

Tuesday 31st: Visit of the Blessed Virgin  
Mary to Elizabeth



St. David's Church

# SPRING FAYRE

In the Church and the Community Hall

Comer Gardens

## SATURDAY 28th MAY

Bric-a-brac

2pm - 4pm

Plants

Cakes

RAFFLE

Books

Refreshments

1st Prize £50

Tombola



*Plus many other prizes!*

Games

## *Celebrating the Queen's Platinum Jubilee*

**Sunday 5th June:** There will be a free, community event to celebrate the Queen's Platinum Jubilee, in St John's churchyard (or church if the weather is bad!). The event, which runs from 3pm to 5pm, will feature live music from local group Granny's Attic, a children's art competition (supported by our local primary schools), a photographic display of various events across the seven decades of the Queen's reign and children's games. There will be tea and cake and a "Royal Toast."

Sign-up lists for people who are happy to provide cakes and to help in various roles, will be appearing in all our churches soon. Please look out for them and sign up. Get involved in this historic event and help us to make it a day to remember for all our community.

*Sarah Cottrill*

--- 000 ---

**Saturday 11th June:** Christopher Whitehead Language College and Sixth Form are running a Platinum Jubilee Festival from 12 noon until 8pm. All are welcome and entrance is free. There will be live music from local bands, musicians and choirs, dance performances, walkabout theatre, circus skills, drama, poetry readings, arts workshops, face painting, activities and games, a small fairground ride for younger children, a licensed bar provided by The Brunswick Arms, afternoon tea for elderly residents, festival food and much more.

## Events at St John's



To celebrate  
Her Majesty's Platinum Jubilee  
Discover History  
will be taking a look at the  
Coronation of  
HRH Queen Elizabeth

Join us on May 12th  
1pm

St Johns Church  
£4 talk and refreshments

### ST JOHN-IN-BEDWARDINE

Open for Tea/Coffee  
and Cakes  
£2.00



**Wednesday 18th May**  
at 3pm in the Church  
**ALL WELCOME**

### St John in Bedwardine



Join us for Fresh Coffee and Danish  
'Friendship and Thoughts'

At 10.15am on

**Saturday**  
**28<sup>th</sup> May**

*Thought for the day by*  
*Revd Phil Bradford*

**ALL WELCOME**

### *NB No meeting in May*

Women's Breakfast Meetings  
for Friendship and  
Christian Fellowship

Why not join us?  
Everyone is welcome!

Our next meeting is on

**Saturday 11<sup>th</sup> June**

9.00am until 11.00am

St John-in-Bedwardine  
in The Blakefield Room  
Contact Margaret Rutter (425396)

*This month's speaker will be*  
*Rev Katherine Pickering*  
*Bromyard Road Methodist Church*



**WORCESTER**  
**Timber Products**

**SHOW  
GARDEN  
now open**

**Unlock** the  
potential of your  
outdoor space

**Jacksons  
Fencing**   
APPROVED INSTALLER

**Fencing**

**Landscaping**

**Sheds**



**www.worcestertimberproducts.co.uk • 01299 250744**

 @worcestertimberproducts  @worcester\_timber\_products  @wtp\_fences

**Unit 6, Beech Drive, Hartlebury Trading Estate, Worcs DY10 4JB**

# *Kingdom Art - exploring faith through creativity.*

Kingdom Arts takes place at St George's church. Once a month from 9.30am with a short service at 10am which introduces the topic for the morning, it is a morning of different crafts, painting and clay, colouring and writing, with time to talk and share with others, but also with spaces for quiet reflection and prayer. Coffee and tea are available.

At noon, members gather together and share their morning's work and the morning closes with some music and prayer. Soup, bread and cheese, followed by cake and fruit are shared.

This is such a peaceful morning with space from our busy lives to come together with others. I find it enormously uplifting. The next date is May 10th.

*Jenny English*



find us Recycling for Good Causes  
14 Amber Business Village  
Amington  
Tamworth  
B77 4RP

call 0800 633 5323  
email [info@recyclingforgoodcauses.org](mailto:info@recyclingforgoodcauses.org)  
visit [www.recyclingforgoodcauses.org](http://www.recyclingforgoodcauses.org)

## Items we recycle

<h3>Jewellery</h3> <p>Unwanted gold &amp; silver including damaged items Costume jewellery Watches</p> 	<h3>Coins &amp; Currency</h3> <p>Banknotes &amp; Coins Any currency UK or foreign of any age/unchangeable currency</p>  
<h3>Mobile Phones, Cameras &amp; Gadgets</h3> <p>Mobile Phones . Video Cameras Old Film Cameras . Digital Cameras . Sat Navs Game Consoles . Games &amp; Accessories . iPods MP3 Players . Tablet Computers</p> 	<h3>Stamps</h3> <p>Loose / Single Stamps First Day Covers Presentation Packs</p> 

**Please put in a bag (for the attention of Joy) and hand to a church member.**





Worcester, Droitwich & Malvern

We are very happy to come and meet you and your relatives to discuss our services. Please call us at any time for more information about how we can help you.



**01905 427 863**

[www.radfieldhomecare.co.uk](http://www.radfieldhomecare.co.uk)  
[worcester@radfieldhomecare.co.uk](mailto:worcester@radfieldhomecare.co.uk)

We are extremely proud to support older people in our community to live independently in their own homes. Our team is passionate about delivering the highest standard of care and will always go above and beyond to help our clients.



- Outings & activities
- Household tasks
- Medication support
- Wellbeing
- Dementia care
- Personal care



A well established family business offering competitive rates and a friendly, reliable service. Customer satisfaction is our priority.

**Services**

- |                            |                                  |
|----------------------------|----------------------------------|
| General Plumbing & Heating | Internal & External Wall Repairs |
| Painting & Decorating      | Tree Felling & Pollarding        |
| Hedge Trimming             | Household Clearance              |
| Lawn Mowing                | Jet Washing                      |
| Decking                    | Weeding                          |
| Pruning                    | Fencing                          |

**Areas Covered**

Worcestershire & surrounding areas

**Garden Clearance**

All rubbish taken away



**Contact**

Julian Shuttleworth

07557 027001

[info@jspropertyandgardenservices.co.uk](mailto:info@jspropertyandgardenservices.co.uk)

[www.jspropertyandgardenservices.co.uk](http://www.jspropertyandgardenservices.co.uk)



## *Welcome to Rachel*

Hello, I am Rachel Cramp. I am looking forward to joining St John-in-Bedwardine and St Michael's, for my Reader Training Placement at the end of April. I will be with you for approximately 10 weeks. It was lovely to join some of you at the Tuesday Communion a few weeks ago, and I'm sure I will meet many of you soon.

To introduce myself – I worship at St John Baptist, Claines, where I was Churchwarden for ten years.



I then took the Bishop's Certificate course, and an Authorised Lay Minister course, which were most interesting. My cohort of the Worcester pastoral students has formed a wonderfully supportive group; we had met just days before the first lockdown for a Quiet Day, at Hallow Chapel!

After a period of discernment, I began my Reader Training, at Queens Foundation, in Birmingham last Autumn. This first year is passing very quickly! I will have one more year to complete, before I will become a Licensed Lay Minister, or Reader!



I am married to Ian, who I hope you will meet, and we have five children and seven grandchildren ranging in ages from 1 to 19! I originally came from Lincolnshire, where my father was a bulb grower, so you can understand why I loved all the daffodils around church. I undertook my teacher training in Liverpool and my degree at Worcester. I taught in several Worcester schools but worked for 27 years at The Chase in Malvern.

Two of my children are identical twins, and for many years I was involved in Worcester Twins Club and the Twins and Multiple Births Association and locally chaired Worcester Home-Start and Worcester Council for Voluntary Service.

At Claines, I am joint Mothers Union Branch Secretary, and trustee for Worcester Mothers' Union. I particularly enjoy working with children and am part of the Open the Book team, am a qualified Godly Play teacher and a Governor at Claines CofE Primary School. At Claines I also look after the Prayer Chain, so may I offer this prayer for us all.

*Dear Lord, as we rise to meet each new day, please let us be filled with your spirit. Wherever we go, let us spread love, joy, peace, goodness and faithfulness. Let us desire to become more like you and to worship you in all we do. Amen*

*Rachel Cramp*



**GoodOaks**  
Quality Care at Home



**Good Oaks' award-winning home care enables you to stay safe and independent at home.**

From 30-minute visits to 24-hour live-in care our simple, surprisingly affordable prices ensure you only pay for what you need.

Call or email us to find out more

**01905 950409**

worcester@goodoakshomecare.co.uk

**goodoakshomecare.co.uk/  
worchester**

## **Kingsway House Business Centre**

Are you rethinking your office arrangements?  
Are you looking for more flexibility?

**MEETING  
ROOMS**

**SERVICED  
OFFICES**

**EVENT  
SPACE**

**COWORKING  
SPACE**

Superfast internet, reception service and great coffee all included in our prices!

Book a tour today  
**01905 619877**

info@kingsway-house.co.uk  
www.kingsway-house.co.uk

**40 Foregate Street, Worcester**  
100m from Foregate Street station

## *Would you like to advertise in this magazine?*

The Parish Magazine is published A5 in size, in black and white.

There are eleven issues each year, July and August being a combined issue.

An advert can be full-page, half-page or quarter-page in size.

The booking can be from one month to one year.

If you are interested to advertise, please contact Sue Hussell on 01684 893397 or by email at sue.hussell@talktalk.net

# *Summary of St John's PCC meeting*

*30th March 2022*

There were 11 members present. Apologies were received from 4 members. The meeting opened with a prayer.

**Stewardship:** Phil Bradford apologised for the delay to the Stewardship campaign, but that it should now have gone out.

**Queen's Platinum Jubilee Celebrations:** There will be a celebration in St John's church on the afternoon of Sunday 5th June with music and a tea party. On Saturday 11th June Christopher Whitehead have a music and activities event from 12-8pm. Jenny English and Ellen Little and The Friends will be participating.

**Prayer Diary:** The PCC agreed that they would like to keep the current Prayer Diary as there are too many complications to make a Team Prayer Diary.

**Approval of 2021 Accounts:** The treasurer circulated the 2021 accounts by email on the day of the meeting, but was not able to be present. It was agreed that the PCC would give their approval by correspondence, to allow time for questions. The PCC all agreed to the Kingdom Mission fund (£6,190) being undesignated.

**Ministry Share:** The clergy and treasurers met to discuss payment of the Ministry Share, which is £117,000 between the 3 parishes. St Michael's have applied to the diocese for the income support grant which should be £20-30k. Further details about the level of the shortfall and the split between the parishes will be given to the PCC once the diocese have confirmed the size of the grant.

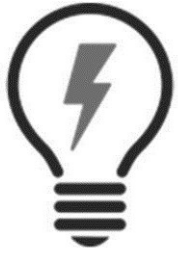
**Approval of the Churchwardens' Annual Fabric Report:** The report was circulated to the PCC before the meeting and approved unanimously.

**Joint Council:** [*See page 41*] A summary of the proposals for a Joint Council was circulated before the meeting. The latest draft scheme has been sent to the diocese to ensure that it is in order. In late April/early May it is hoped that the actual scheme will be available to circulate for any questions before a vote is made at the APCM. The PCC were all in favour of supporting the scheme. Thanks were expressed to Philip Evans who has been instrumental in putting the scheme together.

**Heating Charges:** Due to the substantial rise in the cost of energy the PCC agreed to increase the cost of optional heating for occasional offices (weddings and funerals) from £60 to £80. Blakefield Room heating costs to be investigated. The treasurer will do a breakdown of the viable cost.

**Covid Restrictions:** Due to the high number of Covid cases it was agreed to keep the current restrictions.

*Continued on page 17*



# JDS Electrical

**For all your electrical needs  
Fully qualified and insured**

**JON HALL**

**07528 183057**

**[jds.electrical@outlook.com](mailto:jds.electrical@outlook.com)**



## VIKING GARDEN SERVICES

Do you need a hand with the gardening or have a garden which needs a bit of an overhaul? I'm a qualified horticulturalist with over 40 years' experience and would love to come and help you out.

So whether you need a help with mowing, digging, weeding, strimming, pruning, trimming, cutting back or any other garden jobs, then please call me. I offer competitive rates and no job is too big or too small!

Call Kevin on 01905 428526

M: 07741 496210

E: [kevin@lingermadsen.co.uk](mailto:kevin@lingermadsen.co.uk)

Facebook: Viking Garden Services



## Superb Organic Cleaning of Carpets, Curtains, Upholstery & Leather

- Carpet and upholstery organically cleaned
- Oriental rug cleaning
- Curtains & mattresses deep cleaned
- Dust mite control
- Guardsman stain protection plans
- Spot & stain removal
- Anti-bacterial and anti-viral treatments available
- Leather cleaned and conditioned

For your free non-obligational quote call:

**0808 144 8172**

**[www.safeclean.co.uk](http://www.safeclean.co.uk)**

Safe Organic  
Cleaning

Remove  
dust mites



Remove  
odour



Remove  
bacteria



**Safeclean**<sup>®</sup>  
*The furnishing care specialists from* **GUARDSMAN**

*Continued from page 15* **Safeguarding:** The PCC are required to review the Safeguarding Policy annually. It was re-approved unanimously.

**Health and Safety:** Electric socket covers were investigated and found to be more dangerous than not using them. There are areas that need a good clean, such as the skirting boards. The cleaner's remit will be reviewed.

**APCM Preparations and Electoral Roll Revision:** The PCC approved the plan for the revision of the Electoral Roll. Graham and Barbara Willis do not wish to seek re-election to the PCC. This leaves 3 vacancies on the PCC. There are also 3 Deanery Synod Rep vacancies (for 1 year from 2022-2023), and 1 Churchwarden vacancy. Phil thanked Barbara and Graham on their last occasion on the PCC.

**Marriage Measure:** The PCC noted that a Mission and Pastoral Marriage Measure was passed in January for The Benefice of Worcester City West, which means that couples can get married and have banns read in any church within the team if they have a connection to one of the churches.

**Burials:** Colin Nash responded to an enquiry about a burial in the churchyard. He discovered that the enquirer is related to Charles Babbage, the father of modern computing, and that his wife is buried in St John's churchyard [*see page 28/29*].

**Kitchen Upgrade:** The kitchen needs a full upgrade – including new dishwasher and cooker and hood. Jenny and Rob Little to give Brian/Gordon a specification that can be used to obtain quotes for the work. We could use some of the Haynes sisters' legacy to pay for the work.

**Church Clean Up:** Joy Job suggested setting a date to give the church a good clear out in late spring/early summer. A skip will be needed. Date to be agreed.

**QR Code for Donations:** The possibility of displaying a QR code for people with a banking app to make donations in church will be investigated.

**Queen's Canopy:** Colin Nash would like to plant some trees in the church grounds for the Queen's Canopy to provide blossom and be a haven for wildlife. He has already had 2 trees and some money donated. The PCC agreed to spend up to £150 from the undesignated Kingdom Mission Fund.

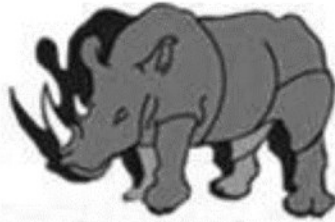
**Recycling for Good Causes:** If anyone has any objects for recycling [*see page 11*], please put them in a bag for the attention of Joy Job.

**Date of APCM:** Sunday 29th May at 11.30am (after the morning service).

The meeting closed with The Grace.

*PCC minutes by Liz Edwards (PCC Secretary)  
Summarised by Graham Evans (Magazine editor)*





# RHINO ROOFING LTD

- FLAT ROOFING REPAIRS
- RE-ROOFS
- FLAT ROOFS
- CHIMNEY WORK
- FASCIAS
- SOFFITS
- GUTTERING
- LEADWORK
- RE-POINT RIDGES AND VERGES



## Genuine OAP Discount

If you are looking for trained professionals to fix your roof, look no further. Rhino Roofing Ltd is a very professional and established company. You can put your trust in us to give you the best as we have over 20 years experience and still counting! Contact us for a

**FREE QUOTATION – CALL US ON 01905831364**



<https://www.facebook.com/rhinoroofingltd>



[https://instagram.com/rhino\\_roofing\\_ltd/](https://instagram.com/rhino_roofing_ltd/)



<http://www.rhinoroofing.co.uk/>



[rhinoroofingltd@hotmail.com](mailto:rhinoroofingltd@hotmail.com)



Please mention the magazine when responding to advertisers



## *Women's Breakfast*

12 people enjoyed a hearty breakfast with thanks to Margaret, Sally and Anne. Our speaker was Sarah who gave a very informative talk on 'A WIFF of Festivals.' Sarah asked us to recall 7th July 2005 when 4 terrorist attacks on the London Underground and Tavistock Square killed a total of 52 people and injured 700.

Part of the government's response to this terrorism was to encourage the formation of interfaith groups to promote greater understanding and friendship between people of different faiths. Worcestershire Interfaith Forum was formed (known as WIFF) - Sarah is secretary. The Forum has representatives from Baha'i, Buddhist, Muslim, Quaker, Unitarian, Jewish, Hindu and Sikh faiths as well as members of the various Christian denominations. The aim of the forum is to promote understanding and fellowship between members of the different faiths. It runs various activities including the Annual Holocaust Memorial Day (January 27th).

As we approach Holy Week, remembering the final and harrowing week of Christ's life, then celebrating Christ's resurrection at our most joyful festival of Easter, other faiths are celebrating festivals which are of great importance to them.

Sarah then went on to talk about the Jewish Passover which celebrates the deliverance of the Hebrews from slavery in Egypt.

Muslim Ramadan and Eid. Ramadan is a holy month of fasting during which food and drink are abstained from during daylight hours.

Buddhist Songkran (13th - 15th April) marks the beginning of the traditional Thai New Year. Water is an important element of Songkran. It is thrown about and there is ritual bathing of Buddha images. The first day of the festival is an exuberant celebration.

Sikh Vaisakhi (13th -14th April) is a traditional Punjabi harvest festival celebrated in rural communities with processions, singing and colourful decorations.

Baha'i Ridvan (21st April - 2nd May) is a 12 day festival celebrating the beginnings of the Baha'i faith in 1863. It commemorates Baha'u'llah's declaration that he was a Manifestation of God. It is the most holy and most joyous of Baha'i festivals.

During Sarah's talk it was very interesting to note the similarities between the different faiths and their shared values. The importance of periods of fasting and prayer, celebratory feasting, charitable giving, caring for the environment, and promoting peace and ending violent conflict. Thank you, Sarah, for a most interesting and thought-provoking talk.

Please note that there will be no breakfast meeting in May. The next one will be on 11th June.

*Joy Job*



*Prayer for  
Ukraine UA*



During Lent, the Lent Group have been studying a book called ‘Embracing Justice’ by Isabelle Hanley. It has been most thought provoking and has helped us all to realise that the only way we may be able to change things in other countries is to pray for them.

You may wish to use this prayer in your prayer time during May.

Lord Jesus, we hold before you the people of Ukraine wherever they are living in our world.

We pray for those who are fighting and their fear at what is being demanded of them. Grant them your strength to face the unknown.

We pray for the women and children, their fears for the future of their families and friends.

We pray for all peoples who are left behind and who have been unable to escape the violence and degradation that is being perpetrated.

We hold before you Lord, the refugees, their loneliness and isolation in trying to get to a place of safety.

Heavenly Father, we place into your hands the people of Ukraine and ask that you will be with them in their pain and suffering.

Lord, we ask in your name for there to be resolution to the suffering in this country.

Merciful Father, hear our prayers.

Amen

*Jenny English*

## *A Song for Peace*



On Saturday 2nd April Hannah Roper organised a concert in aid of the crisis in Ukraine. Hannah brought together an extremely talented group of musicians including Hope Pugh, Mezzo-soprano, and our very own John Brierley, who accompanied the musicians on the piano. In addition to these there were some exceptionally gifted young local musicians. They all put heart and soul into the pieces that they played, and we were magnificently entertained for 2 hours with a wide repertoire of music featuring violins, a string quartet from year 8 at Hereford Cathedral School, piano, bassoon, oboe and the organ.



Drinks were provided by members of the church during the interval and a raffle was held. The event raised just under an incredible £1,500, which will now be shared between the DEC and UNICEF disaster appeals.

A great achievement and our thanks go to Hannah, all the musicians and singers and helpers from the church.

*Colin Nash*



## *St David's Coffee Morning supports Ukraine*



Our usual monthly coffee morning took place on Wednesday, April 6th and once again attracted a large number of people who enjoyed good company and delicious home-made cakes.

We had decided that in view of the continuing situation in Ukraine we would donate all money raised this month to the Red Cross Ukraine Appeal.



People were extremely generous and several sent donations even if they couldn't attend the morning. As a result, I was able to send an amazing £304.84 to the appeal.

Many thanks to all who supported us by making cakes, attending and donating so generously.

*Sarah Cottrill*



## *Church partners with Lions Club to help Ukraine*

Everyone was shocked to hear about the humanitarian crisis unfolding in the Ukraine and the displaced people streaming into the surrounding countries.

But how to help? This was a question that exercised both the church and Worcester Lions Club.

Our local Lions club is part of Lions International a global voluntary service organisation. And, although the club had made a financial donation to support the work of fellow Lions clubs in the Ukraine, Poland and surrounding areas, it was unclear how best to support the collection and shipment of much needed supplies for the displaced people streaming across the borders into Poland and surrounding areas. That was until an appeal was

launched by Worcester Warriors linked to a major international charity that would regularly ship the items to Eastern Europe.



Realising that the main collection point at Sixways Stadium might prove difficult for the people in the St Johns area wishing to donate, the Lions club approached the church to provide a local collection point. Not only did the church agree to the use of the Blakefield Room, but also agreed to partner with the Lions club in running the appeal. As a

result, both groups worked together to advertise the drop off times, man the collection point and ship the donated items over to Sixways.

In total we managed to fill a transit van and several cars with the kind donations made by the St Johns Community, all of which were transported over to Sixways. A great example of Church and Lions Club working together to fill a need.

Thanks to all those who helped and those who donated.

*Chris Southworth  
Worcester Lions*

## *Rogation days in France.*

In 470, during a time of unusual calamities (storms, floods, earthquakes), Bishop Mamertus of Vienne in Gaul (modern Limoges) originated an annual observance of penitential exercises for the three days before the Feast of the Ascension.

With the cooperation of civil authorities, he decreed that the faithful abstain from servile work and that this triduum be held as a time of penance, with prayer and fasting. He also prescribed penitential processions (litanies) for each one of the three days. Thus the name "litanies" was given to the whole celebration.

Very soon other bishops of Gaul adopted the new observance. At the beginning of the sixth century, it started spreading into neighbouring countries. In 511 the Council of Orleans prescribed it for the Frankish (Merovingian) part of France.

Rather like "beating the bounds" Rogation day activities are very often associated with an agricultural need/benefit: so we have the blessing of "les semences" (sowings) or the blessing of "la teilliage" (trimming of the vines).

For example, friends of the Fraternity of St Joseph (the Guardian) in La Londe Les Maures, France, were recently welcomed by a parishioner to his vineyard for a Rogation procession and Mass. So, the procession was held to invoke God's blessing upon the fields and was followed by the Mass of the day, which happened to be Saint Bernadin de Sienna (the priest wears the appropriate vestments for that day). The Mass is held "sur le champ" (in the open air) thus all the regalia needs to be transported and erected in an appropriate spot.







Prior to the reading of the Gospel both the bible and the altar is censed. Nothing is excluded including the ringing of the bell during the prayer of consecration.

The Liturgical colour for the major vestments (cope and/or stole) is violet by tradition, but if the first Rogation day falls on a saint's feast day, then that colour may prevail. Similarly, if the procession finishes in a particular church for the celebration of the Mass, then the colour appropriate to the Patron Saint is used.

The deacons and assistants of nearby churches (or parishes) take part in the Mass almost as concelebrants. They are responsible for the distribution of the hosts to both the congregation present and those who are in the associated churches.

The host is offered in one kind only. Wine reserved for the celebrant only - even when it is held in a vineyard!

*Arthur Miller*

---

## *Update from Penny in Peru*

Life is very busy here. Especially since in the last few weeks an additional factor has been added. The departure of the rector of the English-speaking congregation has meant that Juan Carlos takes the communion part of the English-speaking service, and we are both a bit involved there now too. At least life isn't boring!

*Penny Marcés*



## *Tea and cake*



As part of our community mission every third Wednesday of the month, at 3pm we have tea and cake at St John's Church.

We started in September 2021, after various lockdown easings. We were pleasantly surprised with how many people turned up - it was really nice to be able to see people out and about and meeting up with old friends and new friends for a much-needed chat.

8 months later and Tea and Cake is still going strong! Last month we had between 25-30 people and we always, always have plenty of homemade cake to go round!

Just a couple of things to share:

One of the ladies passed around the 'ditty' below, given to her by her friend so she could have a laugh, sung to the tune of 'These are a Few of My Favourite Things' from the Sound of Music:

### *It Comes To Us All*

*Aspirin and nose drops and needles for knitting  
Walkers and handrails and new dental fittings  
Bundles of magazines tied up in string  
These are a few of my favourite things*

*Cadillacs and cataracts and hearing aids and glasses  
Polident and Fixodent and false teeth in glasses  
Pacemakers, golf carts and porches with swings  
These are a few of my favourite things*

*When the pipes leak  
When the bones creak  
When the knees go bad  
I simply remember my favourite things  
And then I don't feel so bad*

*Hot tea and crumpets and corn pads for bunions  
No spicy hot food or food cooked with onions  
Bathrobes and heat pads and hot meals they bring  
These are a few of my favourite things*

*Back pain, confused brains and no need of sinnin'  
Thin bones and fractures and hair that is thinnin'  
And we won't mention our short, shrunken frames  
When we remember our favourite things*

*When the joints ache  
When the hips break  
When the eyes grow dim  
Then I remember the great life I've had  
And then I don't feel so bad.*

Then there is Pat who is mobilising all knitters and crocheters to make squares for a giant yarn Christmas tree. She would love to meet anyone who would like to help.



So, if you are at a loose end on Wednesday 18th May come along and join us. We promise a warm welcome - and homemade cake of course!

*Ellen Little*

## *Palm Sunday*

On Palm Sunday, 10th April, we held a Team Eucharist with a dramatised reading of the Passion Gospel by the clergy and ALMs.

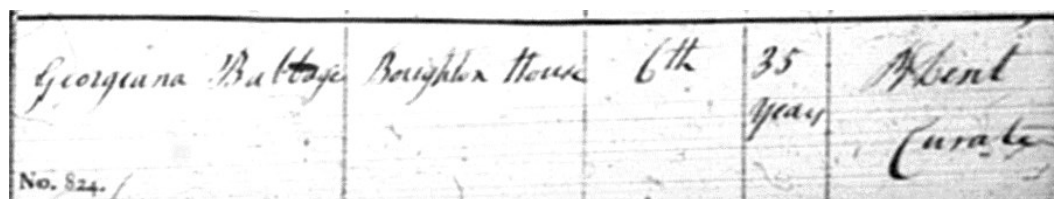
*Colin Nash*



## *Charles Babbage*

We were recently contacted by someone asking about a burial in our churchyard.

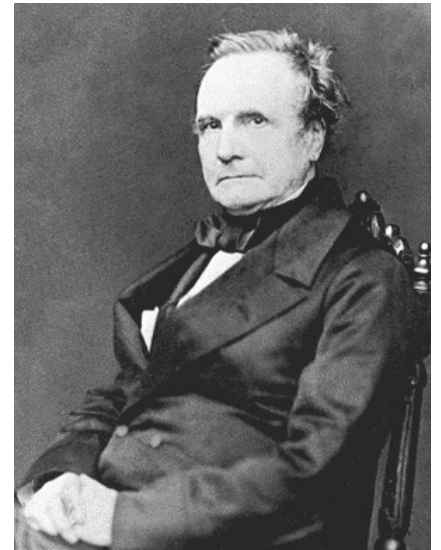
Her ancestor, Georgina Babbage, was buried in the churchyard in 1827.



She was trying to find out about Georgina's son, Dugald Bromhead Babbage. Research on Google revealed that his father was Charles Babbage, which was a name that I knew.

Charles Babbage was a mathematician who was called the ‘Father of the computer’ and he invented the first mechanical computer, the Difference Engine.

On checking records about Charles, the only mention of Worcester is that his wife was buried in St John’s. So, whether they were just visiting someone or something else we will probably never know. However, it does mean that somewhere in the churchyard, among the 9600 souls, we have the last resting place of the wife of a very important person in the history of computing.



*Colin Nash*

---

## ***“Excellent” St Clement’s CofE Primary School***

We are extremely pleased to share with you the outcome of our recent SIAMS inspection. SIAMs stands for the Statutory Inspection of Anglican and Methodist Schools and the inspections happen approximately every 4 years. Below are some quotations from the report.

- The school's vision is deeply rooted in Christian theology and understood by the whole community. It drives a highly relevant contemporary curriculum enabling all pupils to flourish.
- The school's vision has excellent impact on staff and the wider community as well as the multi-academy trust to which it belongs. This is seen in outward facing support and resourcing of other schools over a wide area.
- Governance at trust and local level is exemplary in supporting and delivering the distinctive Christian vision. Thoughtful and innovative monitoring and evaluation has real impact in driving improvement and strategic direction.
- Religious education (RE) is a particularly excellent feature of the school making a highly significant contribution to the clarity of the vision. As a result, pupils have a depth of theological understanding and proficiency which gives them exceptional confidence in the way they understand the spiritual aspects of life.
- The school uses a highly developed and innovative curriculum relevant to contemporary living. Christian views around the idea of sustainability are one example of this. As a result, pupils see the importance of the curriculum in their lives and are inspired to make excellent progress.

We were delighted to receive ‘Excellent’ in all 3 areas which is the highest possible outcome.

*Catherine Atkinson*  
*Acting Headteacher, St Clement’s School*

## *Community breakfast*

The 17th Community Breakfast took place on Saturday 19th March, at St John's church. We served 103 "Full English Breakfasts" and the occasion was a joyful event.



We benefitted from the help of the guides, who helped us set up on Friday evening and came on Saturday turning their hands to serving, making toast, Serving unlimited drinks and all with a smile and so much enthusiasm. It was a pleasure to work together and we hope that this will happen again in the future.



We covered all our costs and have a float to carry forward of £74 towards our next breakfast in the Autumn. My thanks are for the Little family and all their hard work in the kitchen.

*Jenny English*

## *Lent lunches*

**ST JOHN-IN-BEDWARDINE**

### **LENT LUNCHES**

*Soup, bread, cheese and fruit  
with tea or coffee*



**Wednesday 9<sup>th</sup> March**  
**Wednesday 16<sup>th</sup> March**  
**Wednesday 23<sup>rd</sup> March**  
**Wednesday 30<sup>th</sup> March**  
**Wednesday 6<sup>th</sup> April**

In the Blakefield Room

**12.30pm to 2pm**

*Suggested donation £4 for UNICEF to support work with children  
in Afghanistan and the world Covid vaccine programme*



*Ellen Little*



## *Patients are waiting - but who is watching?*

In 2014 I was diagnosed with chronic lymphocytic leukaemia. It's a blood cancer where too many white cells, notably lymphocytes, are produced and because they are immature, they don't do the job they used to and they hang about in the blood system longer than they should as they don't have the self-destruct capacity that healthy cells do. This can cause problems for the spleen, kidneys and production of haemoglobin and generally healthy blood system. In essence, it's a cancer of the immune system.

As with chronic diseases it is a slow-developing disease which may need treatment at some stage or may not. It is not a disease that can be cured but can be controlled by drugs that tell the lymphocytes to die and the phagocytes to clear up the debris. It has been found that early treatment is of no advantage and so patients are put on watch and wait or active monitoring. There are approximately 13,000 patients in the UK on CLL watch and wait. I am one of those.

Professor Chris Fegan, head of Cardiff University Hospital School of Medicine and CLL specialist considers CLL patients on watch and wait are the forgotten cohort. I agree with him and so do Leukaemia Care who have been campaigning since 2018 on this issue and have relaunched this spring. As part of this campaign they asked me to write my patient story which, as I write at the beginning of April, has just been published in their spring magazine and on their social media forum.

I am under the care of my GP and, although they have a general understanding of the disease, they rarely have a full understanding as it is a relatively rare disease. Covid has made the situation worse and most CLL patients, including myself, had to fight to be recognised as clinically extremely vulnerable and then immune compromised in order to get the right treatment at the right time which rarely happened.

Rightly, acute cancers get a lot of concern as it is a life or death situation and no doubt for doctors an attractive area of medicine to study. But chronic diseases also deserve attention. I hope I have done my best to make people, doctors and particularly the NHS aware of the issues that face CLL patients on watch and wait.

*Margaret Miller*

**Leukaemia Care**  
YOUR Blood Cancer Charity

For more information, visit  
<https://www.leukaemiacare.org.uk/>

# *The History of St John's Parish*

## *XIII: The Nineteenth Century*

In popular thought, the nineteenth century is a period of great Christian revival, when the churches were full and religion permeated the nation's souls. There is a good deal of Victorian mythology involved in this interpretation, the triumph of hope over history. While huge churches and chapels were certainly built and congregations were very much larger than today, it is very doubtful that all of these buildings were always (if ever) full. One only has to read Victorian novels, or the despairing words of moralists, to realise that this was not a realm packed full of churchgoing saints. Nevertheless, there is no doubt that this was a century of religious energy and revival, an enthusiasm which saw great architectural vandalism wreaked upon many historic churches, not least Worcester Cathedral. Such 'restorations' undoubtedly saved many crumbling buildings from collapse, while the Victorians embraced modernity and change; one of the great irony of preserving Victorian pews is that the Victorians would have been the first to dispense with them if they no longer served their purpose.

The nineteenth century also had a significant impact on St John's. The size of the building was altered for the first time in over four centuries. The Industrial Revolution saw cities grow and major population increase, requiring many churches to accommodate more people and new churches to be built. St John's was a growing area and needed expansion, although we should not rule out a degree of vanity in such projects. In 1861, a new North Aisle was built to replace the old structure. In 1884-85, the chancel was extended eastwards. By 1885, the church had the outline it still has today.

Our knowledge about the internal layout before the nineteenth century is almost non-existent. Thanks to some architectural drawings in Lambeth Palace Library, we do know that by 1840 the church had box pews. Sometime between then and 1861, these were replaced in the nave with the current pews. Matching pews were put in the North Aisle and then, a decade later, the old South Aisle pews were replaced. Pews filled the church, covering what are now the Lady Chapel, Muniment Room and Children's Corner, and stretching further forward at the front of the nave. In addition to the extant upstairs gallery, there were two side galleries. Altogether, this would have given a sizeable capacity, although at the cost of daylight. As part of one remodelling, the pulpit was lowered and moved sides, as can be seen in a photo in the parish office. Someone who started coming to St John's in 1830 and died in 1890 would have lived through three significantly different church buildings.



The growing population did not only cause problems inside the church. The graveyard was now packed and with no more space for burials, was closed by Order in Council in the 1850s. A small piece of additional land was acquired, which allowed more burials for another few years, but this too was closed in 1878. Some 9,000 bodies are known to have been buried since records began in the sixteenth century, so adding in the (unknown) medieval figure would comfortably push this over 10,000. From 1878, however, with the exception of those who could go in pre-existing family vaults, burials in the locality moved to the new municipal cemetery at the end of McIntyre Road.

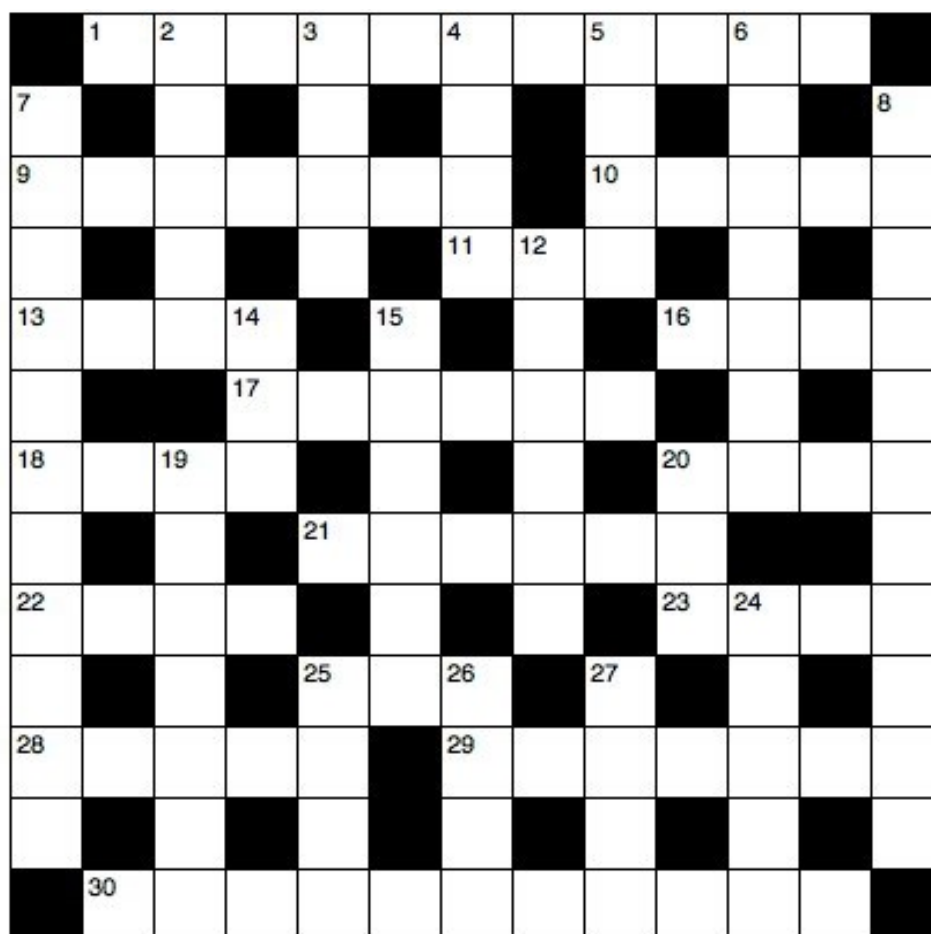
These changes took place alongside broader local reorganisation. The relationship with the city centre had shifted since 1781, when the construction of the new bridge over the Severn, around a hundred yards south of the medieval bridge, meant that the road now swept directly down from St John's to the crossing. In 1837, the St Johns area ceased to be an independent township and was incorporated into the city of Worcester. In 1859, Henwick Station opened, the railway line to Hereford significantly improving local transport links. With the church flooding repeatedly, St Clement's abandoned their site on the east bank of the river and moved across to the part of their parish in which all the parishioners lived; even at this stage, it was bizarre to have the area's two churches so close together, although in those days people would have stuck strictly to their own parish church. This necessitated the first change in parochial boundaries since the Middle Ages, the first of several which would considerably reduce the size of St John's parish by the end of the twentieth century.

The coming of the railway led to a major decline in the number of cattle being driven into the area, which caused a shift in the economy. As industry came to the area, so the fields and orchards which had previously been so abundant began to vanish beneath housing and factories. St Johns began to change from a rural area which just happened to be next to a city, to an urbanised suburb of that city. With industrialisation came all the worst features of Dickensian England, such as poverty, slums and disease. The worst afflicted areas were down by the river, in St Clement's parish; their new churchyard filled up in less than forty years. But there were also major pockets of poverty in St John's parish, contrasting with areas of affluence. This was a time of rapid and disorientating change. When Queen Victoria died in 1901, St Johns was a very different place compared with her accession in 1837.

*Phil Bradford*

## *Crossword*

*The solution is on the inside back cover.*



### **Clues Across**

- 1 Overpowered (Deuteronomy 11:4) (11)
- 9 ‘The — are mantled with corn’ (Psalm 65:13) (7)
- 10 ‘Each man—a sword to his side’(Exodus32:27) (5)
- 11 On the death of Jesus the curtain in the temple was torn from— to bottom (Matthew 27:51) (3)
- 13 Stagger (Isaiah 28:7) (4)
- 16 ‘Anyone, then, who knows the good he ought—and doesn’t do it, sins’ (James 4:17) (2,2)
- 17 Stir up or provoke (Acts13:50) (6)
- 18 Burden (Luke11:46) (4)
- 20 ‘As far as the east is from the—, so far has he removed our transgressions from us’ (Psalm 103:12) (4)
- 21 Sign (Luke23:38) (6)
- 22 ‘After that, Jesus poured water into a basin and began to—his disciples’ feet’ (John 13:5) (4)
- 23 The nature of the seven ears of corn which swallowed up the good ears in Pharaoh’s dream (Genesis 41:23) (4)
- 25 Has (anag.) (3)

- 28 ‘This is the account of Shem, Ham and Japheth,—sons’ (Genesis 10:1) (5)  
 29 ‘I will...make them drunk, so that they...sleep for—and— awake’ (Jeremiah 51:39) (4,3)  
 30 Paul said of him, ‘he often refreshes me and is not ashamed of my chains’ (2 Timothy 1:16) (11)

### **Clues Down**

- 2 Worth (Matthew 13:46) (5)  
 3 ‘A bruised — he will not break’ (Matthew 12:20) (4)  
 4 ‘Suddenly a great company of the heavenly — appeared with the angel’ (Luke 2:13) (4)  
 5 Slip (anag.) (4)  
 6 ‘Take an awl and push it through his — — into the door, and he will become your servant for life’ (Deuteronomy 15:17) (3,4)  
 7 Bountiful (2 Corinthians 8:2) (11)  
 8 ‘Therefore, as we have — , let us do good to all people’ (Galatians 6:10) (11)  
 12 Acquire(2Timothy2:10) (6)  
 14 Container cover (Numbers19:15) (3)  
 15 ‘He...became obedient to death, even death on——!’ (Philippians 2:8) (1,5)  
 19 Refrain(1Peter2:11) (7)  
 20 ‘She began to—his feet with her tears’(Luke7:38) (3)  
 24 One who worships Brahma, Vishnu or Shiva (5)  
 25 ‘Give to everyone who—you’ (Luke6:30) (4)  
 26 ‘I lift up my eyes to the hills; where does my—come from?’ (Psalm 121:1) (4)  
 27 One of those whom the Lord said would be taken from Jerusalem and Judah as judgment on them (Isaiah 3:2) (4)

---

## *Straplines*

You don’t stop laughing when you grow old; you grow old when you stop laughing.

There are two parts to wisdom: knowing what to say and knowing when not to say it.

If you must talk before a service, make sure you include the Lord in the conversation.

It matters not how a man dies, but how he lives. (Samuel Johnson)

For every minute you remain angry, you give up 60 seconds of peace of mind.

Ambitious people climb, but faithful people build. (Julia Ward Howe)

## *Churches in our deanery*

My 'Deanery church of the month' this time is Worcester (Ronkswood), Holy Trinity & St Matthew:

"The church without walls"

Some years ago, when I first went looking for this church many years ago for a meeting, I assumed that the directions that I had been given were incorrect because the building I

approached looked nothing like a conventional church.

Locally I am told it was known as 'The Drum' and of course you can quite clearly see why, as it was a circular building with a vertical sidewall. I used to quite enjoy the various Deanery and other meetings that I attended there in a lovely open space with comfortable seating and good acoustics, due I suppose to those smooth concrete walls. There was also a capacious parish hall to one side where the local parishioners always made an excellent cup of coffee.



From the church web site and a trawl of the internet I was able to find that a Holy Trinity Church was originally built in Shrub Hill by William Jeffrey Hopkins in 1866 to serve the East side of the city centre following the arrival of the railway in 1850. The roof timbers originally formed the roof

of the Guesten Hall at the cathedral and after the church was demolished in 1969 that roof structure went to the Avoncroft Museum of Buildings at Bromsgrove where, as it is now a lot lower down, it can more easily be inspected.

In the 1950's, additional new housing was being developed in the Ronkswood area about one mile further East of Shrub Hill.

There has been an active church in Ronkswood since the early 1950s. The first church was a wooden hut, seating about 30 people, sited on the school playing fields (known to many as the “gardening shed”).



A multi-purpose concrete hall, a mission church dedicated to St Matthew, was built in 1952 on the current site with seating for up to 100. The congregation continued to grow, and it was considered a poor Sunday if fewer than 150 children attended the Sunday School in the afternoon! The building was used on most days by church and community groups and there was a lively programme of activities and outings. All sorts of events were held to raise money for a permanent church.

The Revd. Walter Norris was inducted in 1961 and oversaw the dream of a church becoming a reality. The Parish of Holy Trinity and St Matthew was formed in 1964 following the closure of Holy Trinity church in Shrub Hill and amalgamation with St Matthew’s church in Ronkswood. The new church building was dedicated in 1965 after a major fundraising campaign and commitment from the local community.

The Worcester Works and Buildings Department was responsible as the main contractors, for the joinery, plumbing and decorating work on the new Holy Trinity and St Matthew's Church in Ronkswood. The unusual circular church was to occupy the central reservation with five roads all converging onto a roundabout in the centre of the estate. This challenging building was completed for the sum of £40,000 and was able to accommodate 320 people. It was a focal point for residents living on the Ronkswood estate.

*Continued on page 39*

# Your Picture Framer

Call in and see our retail space and studio where we continue to provide our great customer service and fine bespoke framing.



- We can frame almost anything
- No obligation advice
- Home/Office visits available
- Computerised pricing – no guessing
- Out of hours appointments offered
- Latest techniques
- Top quality materials



[www.yourpictureframer.co.uk](http://www.yourpictureframer.co.uk)  
[info@yourpictureframer.co.uk](mailto:info@yourpictureframer.co.uk)

01905 423300 or 07730 539168

2A Great House Road  
Worcester  
WR2 4HS

## Worcester Chiropractic Clinic

102 Bromyard Road, St Johns, WR2 5DJ

Expert treatment for a range of conditions:

- Sciatica
- Headaches
- Sports Injury
- Trapped Nerves
- Back Pain
- Carpal Tunnel
- Tendonitis
- Osteoarthritis
- Neck Pain
- And more...

01905 428 956

*Continued from page 37*

On 13th November 2005, a 40th anniversary celebration took place, with the Bishop of Worcester re-dedicating the cross and church wardens' staves. Unfortunately, it was not to stand much longer.

Within seven years cracks had appeared and plaster was falling into communal areas. I was so surprised when I was allowed a viewing of the cracks and structural failures within. What had seemed to be an excellent modern building was dramatically failing. There were a few other churches built to a similar design at the time and having battled maintenance issues over the years, it is understood that Holy Trinity & St Matthew's church was the last surviving example. 'The Drum' was sadly demolished in 2015 after becoming structurally unstable.

The church website proudly states that "Whilst we have no building at present, we believe that a church is more than a building and we continue as a church to serve our community. Having held services in Perry Wood school and the Punchbowl pub, our Sunday worship is now at the community centre, Canterbury Road. Whilst we are working tirelessly to fundraise for a new church building on the Lichfield Avenue site, our congregation is as committed as ever as our mission in Ronkswood continues." Services are also held at care homes and retirement facilities within the parish.

*Paul Fulbrook*

---

## *Unexpected answers!*

The young man took his wife to the Maternity Hospital and was told it would be a long labour. So, he agreed to ring at lunchtime for news. But when he phoned, he dialled the wrong number and got the county cricket ground. He said: "I brought my wife to your place early this morning. Is there any news?"

"Yes, there are seven out and the last two were ducks."

--- 000 ---

Sorting out books for the church fete, a parishioner came across some well-worn and dusty illustrated encyclopaedias, treasured from his childhood. Unwilling to part with them, he put them on a shelf in the garage where his small grandchildren found them and spent many happy hours looking at the pictures.

One day, the vicar called in for a visit, while he was looking after his grandchildren. He asked them what they would like to do while he spoke with the vicar.

"Grandad, can we go and look at those dirty books you keep in the garage?"





# La Fleur Florist

Weddings    Funeral Tributes    Everyday Flowers  
Corporate Flowers    Special Occasions  
Garden Plants

Victoria Phelps  
36 Woodstock Road  
Worcester, WR2 5NE  
Tel: 01905 421820 or 07842258936  
lafleur@hotmail.co.uk  
www.lafleurflorist.co.uk




## Mike Bentley Gardening

Garden Design & Maintenance

*Regular gardening work undertaken  
Pruning, mowing and hedge cutting  
Overgrown gardens cleared*

Tel. 01905 422401  
Mobile 0779 205 1775  
Email MBGardening@outlook.com



RHS Diploma in Horticulture  
Fully insured  
mikebentleygardens.com

## *Proposal to form a Joint Council*

Although St John's and St Michael's became part of the Worcester City West Team on 1st July 2021, they remain separate parishes. However, the Church Representation Rules permit parishes within a Team to form a single Joint Council which replaces their PCCs. Besides allowing the parishes to then work together more closely in mission and ministry, it also has the advantage of reducing the amount of unnecessary duplication of work and roles. With the reduction in clergy numbers and fewer people coming forward to take up lay roles, now seems a good opportunity for our PCCs to take this step.

A scheme to create such a Joint Council is currently in preparation, awaiting comments from the Diocese, and it is our intention to present it to the APCMs in May. As the actual document is rather lengthy and technical, a summary was produced for the PCCs containing the salient points, ahead of their fuller scrutiny. That summary is reproduced here, so people will know what they are being asked to vote on at the APCM.

### *Worcester City West Team*

#### ***SUMMARY OF PROPOSALS FOR A JOINT COUNCIL***

This is a summary of the proposals for a Joint Council for the Team (this used to be called a Joint PCC, but the terminology was changed by the 2020 version of the Church Representation Rules). Full details are contained within the draft scheme, but in essence, the following would happen in all parishes which approve the scheme.

- The individual PCCs would cease to exist and there would be one Joint Council. This Council has all the legal functions and duties previously invested in the individual PCCs.
- As the Joint Council is equivalent to a PCC, the provisions of the Church Representation Rules apply in all instances where not explicitly addressed in the scheme.
- Although there would be a single Council, the parishes remain separate in accordance with the order which established the Team. Each parish would continue to have its own APCM at which to elect churchwardens, Council members and Deanery Synod representatives. Electoral Rolls would also be kept separately by each parish, although it would be permissible to have a single Electoral Roll Officer to manage all rolls.

*Continued on page 43*

# **BEDWARDINE FUNERAL SERVICES**

**A COMPLETE & COURTEOUS 24 hr SERVICE**

PERSONAL ATTENTION

HOME ARRANGEMENTS

PRIVATE CHAPEL of REST

DAIMLER FLEET

MONUMENTAL MASONS

FLORAL ARRANGEMENTS

GOLDEN CHARTER PRE PAYMENT PLAN

**01905 748811**



*INDEPENDENT & LOCALLY OWNED BUSINESS*

*OFFERING*

*EXCELLENCE AS STANDARD*

*TO THIS COMMUNITY and SURROUNDING AREAS*

The Coach House, 30 Bromyard Road, Worcester. WR2 5BT.

*Continued from page 41*

- Each parish would elect their own churchwardens, but it would be permissible for two or more parishes to elect the same person or people as churchwarden and so share a churchwarden or churchwardens.
- The total number of elected lay members of the Joint Council would be determined by the total number of names on the electoral rolls. This would only take into account unique names (so those on more than one roll would only be counted once). If the combined electoral rolls have 100 or more names, there are 12 lay places; if there are 200 or more names, there are 15 places to fill.
- The number of places each parish is assigned on the Joint Council is proportionate to the size of its electoral roll. Based on current electoral roll sizes, if all three parishes joined the Council there would be 12 representatives with 6 members from St John's, 4 from St Clement's and 2 from St Michael's. If only two joined, there would be 12 representatives with 9 from St John's and 3 from St Michael's.
- Those on the electoral roll of more than one parish could only be elected in one parish. If elected by one APCM, a person would be debarred from standing elsewhere. If unsuccessful in the first APCM, they would then be allowed to stand for election in another parish.
- Because APCMs would continue to be held at different dates, the terms of office of PCC members and officers would run from/expire at the first Joint Council meeting after all the APCMs have been held.
- All clergy, the churchwardens of all parishes and all synod members continue to sit ex officio on the Joint Council. The chair is the Team Rector, with the Team Vicar, and then the Lay Vice Chair, the two immediate replacements in the absence of the Team Rector.
- Up to two members could also be co-opted by the Joint Council.
- As it is a Joint Council, there is only a single set of officers, including Lay Vice Chair and Council Secretary. The Council appoints officers such as the Parish Safeguarding Officer and Electoral Roll Officer, but these may be held by one individual or shared.
- The accounts and finances of the parishes are merged, subject to any existing restrictions on how the money can be spent. The Council may appoint a single treasurer or joint treasurers. Any historic trusts or bodies independent of the Council (such as St John's Feoffees) remain unaffected. *Continued on page 45*



**HOME. There's no place like it.**

**Being able to live at home can be one of the most important comforts in an older person's life and because family and friends can't always be there, Home Instead Senior Care are here to help in your area.**

Our Award winning Services Include:

- Companionship
- Light housekeeping
- Local transportations and errands
- Meal preparation
- Convalescence support
- Shopping
- Personal care
- Specialist dementia and Alzheimer's care *and much more...*

For us nothing is more important than providing a convenient and reliable care solution that works for everyone, from an hour to full time cover.

**For an informal, no obligation chat to discuss your needs, OR if you feel you have the right qualities to become one of our CAREGivers please call: *Samantha Smith on 01905 420404.***



Please mention the magazine when responding to advertisers



*Continued from page 43*

- As it is a Joint Council, it assumes all responsibility for employment and other legal issues previously the responsibility of any of the individual PCCs.
- The Council has to be registered with the Charity Commission as a new charity (assuming the threshold is met), with the old PCCs deregistered where applicable.
- Each church could have subcommittees which address issues exclusive to that building or parish. However, all legal responsibilities remain with the Joint Council and no subcommittee could act independently of the Council.

For the scheme to take effect, it must be approved by two-thirds of those attending the APCM (or an extraordinary meeting) and voting. Obviously it requires at least two of the parishes to vote in favour, but if two approve and one does not, the two parishes who vote to proceed can continue together.

The scheme is then sent to the diocese with a record of the APCM votes. It has to be approved by the diocesan authorities and then issued by the bishop. The role of the diocese is essentially limited to ensuring the legal process is correctly followed; it cannot override the wishes of the parishes if due process has been observed.

Once approved, the scheme contains a date on which it comes into effect. Transitional arrangements can be included which allow certain elements to come into effect at a slightly later date.

*Phil Bradford*

---

## ***Sudoku Puzzle***

*Copyright 2008  
KrazyDad.com*

*The  
solution is  
on the  
inside back  
cover.*

	2				1	4		6
9					3	8		
				4				3
	6		2					
	5						4	
					9		7	
6				2				
		3	9					1
8		1	5				9	

# Jobs Done

**Interior Exterior Property Maintenance  
Painting - Decorating - Tiling - Brickwork  
Fencing - Pruning - Paving - Decking**

*No Job Too Small*

**Colin Davis**

**Tel: 07767 025 574**

**Office: 01905 452 950**



## **Footnotes UK**

**174a London Road**

**Worcester**

**WR5 2EJ**

We have expanded our private practice! We now have 3 chiropodists in the clinic and a home visit chiropodist to take care of all your foot needs! Please visit our website to meet our team and book an appointment [www.footnotesuk.co.uk](http://www.footnotesuk.co.uk)

You can telephone for an appointment on 01905 360079 / Mob: 07974 650 775

Or email inquiries to [info@footnotesuk.co.uk](mailto:info@footnotesuk.co.uk)

Racheal Sharman and the Footnotes UK Team

HCPC registered



## *ST JOHN'S LIBRARY*

### **Normal Opening Times**

- Monday: 09:00am - 5:00pm
- Tuesday: 09:00am - 6:00pm
- Wednesday: 09:00am - 5:00pm
- Thursday: 09:00am - 5:00pm
- Friday: 09:00am - 5:00pm
- Saturday: 09:00am - 4:00pm

### **St John's Library Bank Holiday closures**

- Good Friday - Friday 15th April
- Easter Sunday - Sunday 17th April
- Easter Monday - Monday 18th April
- May Day - Monday 2nd May
- Spring - Thursday 2nd June
- Platinum Jubilee - Friday 3rd June
- Summer - Monday 29th August

### *Find us on Facebook at*

<https://www.facebook.com/stjohnslibraryworcester/>

### *Adult Activities*

*Scrabble Club. Meets every Tuesday 2.00 - 4.00pm*

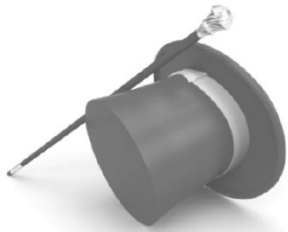
*Chess Group. Meets every Tuesday 2.00 - 4.00pm*

*Poetry Group. Meets alternate months, first Saturday in the month 12.45 - 3.45pm*

*Art Group. Meets every Tuesday at 10.30am*

*Please telephone or 'drop in' for latest dates and events!*





# Worcester Funeral Service

## 01905 23499

Independent Family Funeral Directors



Craig is available 24 hours a day.  
Please call for any assistance.

Golden Charter   
Funeral Plans



Kilbury Drive, Worcester, WR5 2NE

[WorcesterFuneralService.co.uk](http://WorcesterFuneralService.co.uk)

## *From the magazine archive, May 1949*

*Apologies for the blemishes which are in our archive copy.*

### ANNUAL PAROCHIAL CHURCH MEETING

A LARGE and representative company filled the Hall of the Boys' School at the A.P.C. Meeting on Thursday, 21st April, following on the Vestry Meeting.

The proceedings were according to the Act, but in an atmosphere of cheerful and expectant appreciation. Reports were read and adopted on finance, fabric, goods and ornaments, and on the work of the P.C.C.

The principal business was, of course, the election of the new Council for 1949. Serving members were re-elected, and to these were added twelve new members, resulting in a happy union of ripe experience and new enthusiasm.

The Secretary reminded the Council that they were now confronted with the formidable task of finding the necessary funds for the payment of the parochial staff. Difficulties there would be, but they would be surmounted by the same zeal and enthusiasm that had brought new spiritual and social life to St. John's.

Serving Sidesmen were re-elected and ten new names were added.

At the close of formal business the Vicar addressed the meeting. He began by thanking all who had so cheerfully worked with him since his appointment in October last. Our Church now represented a complete cross-section of the community worshipping together—men, women and children. The newly developed social activities encouraged fellowship and service, and had brought many back to the Church from which they had long been absent. He was happy to report that over 50 candidates were being prepared for Confirmation on Whit Sunday.

He did not share the gloomy thoughts of some who saw nothing but spiritual decline in our land. Here in St. John's they had gone out to the people with the real Christian gospel of faith and hope. And what were the results? A quickening sense of fellowship and service, a joyous activity in the Church and in the Parish. He felt with the Psalmist that "the lot had fallen unto him in a fair ground and indeed he had a goodly heritage".

O. H. LAFLIN, *Hon. Sec. P.C.C.*





## *Puzzle solutions*

3	2	7	8	9	1	4	5	6
9	1	4	6	5	3	8	2	7
5	8	6	7	4	2	9	1	3
4	6	9	2	7	5	1	3	8
7	5	2	3	1	8	6	4	9
1	3	8	4	6	9	2	7	5
6	9	5	1	2	7	3	8	4
2	7	3	9	8	4	5	6	1
8	4	1	5	3	6	7	9	2

	O	V	E	R	W	H	E	L	M	E	D		
O		A		E		O		I		A		O	
V	A	L	L	E	Y	S		S	T	R	A	P	
E		U		D		T	O	P		L		P	
R	E	E	L		A		B		T	O	D	O	
F				I	N	C	I	T	E		B		R
L	O	A	D		R		A		W	E	S	T	
O		B		N	O	T	I	C	E			U	
W	A	S	H		S		N		T	H	I	N	
I		T		A	S	H		H		I		I	
N	O	A	H	S			E	V	E	R	N	O	T
G		I		K			L		R		D		Y
	O	N	E	S	I	P	H	O	R	U	S		

*And finally....*



*“The PCC did  
say that  
vigorous efforts  
should be made  
to get people  
back into  
church!”*

Image: Parish Pump  
Caption: Graham Evans



## Sunday Services in the Worcester City West Team - May 2022

	<b>St. John's</b>	<b>St. Clement's</b>	<b>St. David's</b>	<b>St Michael's</b>
<b>1st May</b>	10.30am Eucharist	9.30am Morning Prayer	4pm Eucharist	10.30am Eucharist
<b>8th May</b>	10.30am All Age Worship	9.30am Eucharist	4pm Evening Prayer	10.30am Eucharist
<b>15th May</b>	10.30am Eucharist	9.30am Morning Prayer	4pm Eucharist	10am Eucharist
<b>22nd May</b>	<b>10am Team Eucharist (St John's)</b>			
<b>29th May</b>	10.30am Eucharist	9.30am Eucharist	4pm Evening Prayer	10.30am Morning Prayer
<b>5th June</b>	10.30am Eucharist	9.30am Morning Prayer	4pm Eucharist	10.30am Eucharist

The information above is correct at the time of going to press but please watch the weekly church newsletters and website for the latest information.