

# *The Parish Magazine*

*St John-in-Bedwardine  
St Michael's*



THE CHURCH  
OF ENGLAND



September 2024

50p



## Information

### WORCESTER CITY WEST TEAM CLERGY (clergy@wcw.church)

Phil Bradford (Team Rector) (01905 423794)	Day off: Friday
Sarah Cottrill (Team Vicar) (01905 426257)	Saturday
Gilly Maxim (Assistant Curate) (gilly.maxim@wcw.church)	Friday
Stephen Buckley (Pastoral Minister) (07746 206905)	

### TEAM OFFICE

The office is open Tuesday, Wednesday, Friday 9am-12noon.	
1a Bromyard Road St John's, WR2 5BS	Tel: (01905) 420490 e-mail: office@wcw.church

### ON THE WEB

St John's	Parish Website: <a href="http://www.stjohninbedwardine.co.uk">www.stjohninbedwardine.co.uk</a> A church near you: <a href="http://www.achurchnearyou.com/church/18634/">www.achurchnearyou.com/church/18634/</a> Facebook: <a href="http://www.facebook.com/stjohninbedwardine">www.facebook.com/stjohninbedwardine</a>
St Michael's	Parish Website and A church near you: } <a href="http://www.achurchnearyou.com/church/19689/">www.achurchnearyou.com/church/19689/</a> Facebook: <a href="http://www.facebook.com/stmichaelsdinesgreen/">www.facebook.com/stmichaelsdinesgreen/</a>

### SERVICES

Please check our websites and Facebook pages, or the notices published on the church noticeboards and printed in the magazine and weekly pew sheets.

### SAFEGUARDING

If you have any concerns about possible abuse of a child or vulnerable adult, contact one of the Safeguarding Officers, Fiona Templeton, Elizabeth Forman, or any member of the clergy.

Churchwardens: stjohns.churchwardens@wcw.church Gordon Templeton (749025), Joy Job (423051).	<b>St John's</b>
Pastoral care: The church's Pastoral Care Group offers support if you are lonely, bereaved, or unable to attend church. Please contact Sylvia Render (telephone 422654/email sylviarender@talktalk.net) or Stephen Buckley (tel 07746 206905/email stephenbuckley554@gmail.com).	
Churchwardens: Mike Dowling (dowlingm28@sky.com/ 424539) Val Mason (val.mason@yahoo.com/428948). On Site Safeguarding Officer: Mike Dowling (details above).	<b>St Michael's</b>

Worcester St John-in-Bedwardine and St Michael's Joint Council is a charity with the Registered Charity Number 1205354.

## *A word from the editors*

Welcome to our September 2024 edition. And we take our opportunity to welcome Gilly Maxim as our new Curate, by featuring her ordination as deacon on the cover. Gilly will be giving us her Time and Talents over the next three years or so as she trains to take on an incumbency as vicar or rector.

Talking of which, this edition also sees the launch of our “Time, Talents and Treasure campaign” asking YOU to consider how you can support all that your churches do. Sarah has more to say in her letter.

This magazine is full of examples of events which happened because people gave their Time, Talents and Treasure to make them possible. That’s the key message! Things that our churches do don’t happen by magic - they happen because people get on and do stuff and give stuff. Please have a look at pages 28 to 31 and consider how you will respond.

*Each of you should use whatever gift you have received to serve others, as faithful stewards of God’s grace in its various forms. (1 Peter 4:10)*

*Graham and Sue Evans*

---

## *Important information*

**Email address:** parishmagazine@wcv.church

**Next edition:** Deadline is Sunday 8th September.

**Distribution,** towards the end of September.

**Subscription form:** Page 54.

**Cover picture:** Gilly Maxim was ordained Deacon on Sunday 30th June. Picture by Colin Nash.

**Pictures in this magazine:** Thanks to those who have provided pictures for this magazine, including Graham Evans, Sue Fairman, Liz Forman, Colin Nash, and Sarah Wilkins.

## **The magazine**

We publish a Parish Magazine each month, except August.

Articles on all aspects of Christian and parish life, letters, jokes and anecdotes are welcome - do contribute if you can. If you have a story to tell, please make contact. Do include your name as anonymous contributions will not be considered. If you can, please use e-mail (address below left). The editors will always acknowledge items sent by email; please try again if you do not receive a response. Please send all written correspondence for the magazine to the Parish Office.

The magazine costs 50p to purchase and can be obtained from the back of church. Subscriptions are available at the discounted price of £5 per year; by subscribing you make things easier for our printing team as we know more closely how many copies to print.

You can subscribe by filling in the form near the back of the magazine or by taking a subscription form from the rack (where the magazines are) at the back of the church. Please return the form and your payment to the parish office.

## **Opinions!**

Opinions expressed in this magazine are personal opinions of the authors concerned and may not represent the views of the editors, our Joint Council or The Church of England. Such material is offered as a source of debate or reflection.

## **To advertise**

Please see page 12.

## *Sarah Cottrill*

“Where your treasure is, there your heart will be also.” (Matthew 6.21)

These words, spoken by Jesus as a warning against storing up worldly riches to the detriment of more spiritual strivings, remind us all of the importance, from time to time, of taking stock of what really matters to us. So where or what is your treasure? What would you want to rescue if you could save one possession from a burning house? Perhaps it would be a photograph of a deceased spouse or parent; a worthless but equally priceless picture drawn by a grandchild, an ornament or piece of jewellery of particular sentimental importance. We all have such treasures and there is nothing wrong in that. If we believe that all things come from God, then we must believe that these treasures come from him, and if they are gifts from him, then that makes them even more precious. The time that such treasures become “wrong” is when items of material worth or significance detract us from the source of all gifts – even life itself - and become the centre of our consciousness and desire, pushing God into, at best, second place.



The Parable of the talents (Matthew 25, 14-30) is often used to encourage us to use our God-given talents (gifts or skills) in his service. We are assured that everybody has something they can do in the service of the church – and therefore of God – and that we should not think that our particular gifts are of any less value than another’s. The one who can “work magic with figures” and therefore serve as church treasurer is of no more or less value to the body of Christ than the one who can bake amazing cakes, enhance our worship with angelic singing or expressive reading, or by the warmth of their smile and greeting, make a person feel special and welcome when they arrive at a service.

Some translations of the Bible, however, including my NIV Study Bible give this parable the title “The Parable of the bags of gold” and this reminds us of the original meaning of the word “Talent.” In Biblical times, this didn’t apply, as it so often does now, to a skill or ability. Rather it was a unit of weight which later came to represent a sum of money equivalent to a labourer’s wage earned over fifteen years. Taken in this sense, the parable has been used recently at both St Clement’s and St David’s churches, to launch a major fundraising initiative. Like the landowner in the parable, we have taken the risk of entrusting our money to

the tenants (or parishioners), giving each of them £5 and asking them to go away and double their money! Now St Johns and St Michaels are about to launch their stewardship campaign and are again drawing on this parable to encourage you all to prayerfully consider what you can contribute to your churches and the communities they serve.

It would be foolish to deny that a large part of this campaign is the hope that at least some reading this letter will feel called and able to increase their financial giving. Everybody knows that we, like every household, are facing increasing bills which are difficult to meet. Our churches want to continue to build on the varied and valuable outreach work amongst young families as well as the elderly and the lonely. We want to continue to support our mission partners and charities –local, national and global. None of this is possible without the often sacrificial generosity of our church members. Thank you!

For every one person who is able to increase their financial giving, there may well be at least one who genuinely cannot give a penny more. It is not the object of either this letter or the forthcoming campaign to make you feel guilty if this is the case for you. What we do ask, is that you prayerfully consider if there are other ways in which you can contribute to the life and work of the church. Your time and your skills can be just as much the church's treasure as the figures shown in the bank statement. I have already touched on a few of these "treasures" – singing in the choir, reading the lessons, joining the welcomers, but there are endless other possibilities. Could you join the "flower ladies" make coffee at services and social events, volunteer at Little Lambs or Messy Church, help tend the church yard?

"Where your treasure is, there your heart will be also." We are all God's treasure. His heart was here amongst us when he sent his Son into the world to die for us. His heart remains amongst us and he yearns for us to set our hearts on him, treasuring his Church, his people and all the gifts he gives us, turning them to good use in his service and to his glory.

*Sarah*

---

### *Offertory prayer*

God of all goodness and grace,  
receive the gifts we offer;  
and grant that our whole life  
may give you glory and praise;  
through Jesus Christ our Lord. Amen.

## *In Memoriam*

Mrs RI Dobbins	1 September 1996
Bessie Sage	4 September 1995
Alice Beatrice Ingham	5 September 1999
Beatrice Eva Jones	11 September 1987
Martha Ricketts	13 September 1996
Reg Brunyee	16 September 2006
Florence Smith	17 September 1996
Joan Pauline	19 September 1996
Elizabeth Goodsell	21 September 2003
Doreen Hall	24 September 1987

Additions to In Memoriam are not automatic but must be specifically requested via the clergy.

Inclusion only needs to be requested once; entries are then included until the fortieth anniversary.

An extension may be requested by family or friends of those named.

## *From the Registers, June & July 2024*

### **St John's**

**FUNERALS:** *Rest eternal grant unto them O Lord*

- d. 7th June 2024 Leslie Munn
- d. 22nd June 2024 Audrey Nicholls
- d. 24th June 2024 Jeanette Chance
- d. 25th June 2024 Peggy Rose Pearson

**SERVICES:** (June) Communicants 182. Total attendance at all services 301.  
(July) Communicants 182. Total attendance at all services 506  
including 162 at two funerals.

### **St Michael's**

**SERVICES:** (June) Communicants 60. Total attendance at all services 69.  
(July) Communicants 64. Total attendance at all services 74.

---

## *Weekday services*

The following mid-week Eucharists are scheduled throughout September:

Tuesday	St John's 10am (Eucharist - Book of Common Prayer)
Thursday	St Michael's 10.30am (Eucharist - Common Worship)

Daily offices take place in St John's Church from Monday to Thursday. Morning Prayer is at 8.30am all year. Evening Prayer is at 5pm while we are in British Summer Time, and 4pm when the clocks are on GMT. There are occasional days when other commitments prevent a service happening; the schedule for each week will be published in the pew sheet (see page 8 for an item about this).

## *Dates for your diary*

<b><i>Location key</i></b>	<b>(J)</b> St John's Church	<b>(M)</b> St Michael's Church
	<b>(V)</b> The Vicarage, 7 Manor Road	

**(J) Mondays in term time, 10am:** Little Lambs. The first meeting after the summer break is on 16th September. See pages 10 and 15.

--- 000 ---

**(J) Saturday 7th September, 4pm:** Messy Church, see pages 9 and 21.  
Doors open and drinks available from 3:30pm.

--- 000 ---

**(J) Thursday 12th September, 1pm:** The Good Old Days present Discover History, "Tudor Apothecary", see page 10.

--- 000 ---

**(J) Saturday 14th September, 9am:** Women's Breakfast, see page 9.

--- 000 ---

**Sunday 14th September:** Ride+Stride (incorporating September's Walking Church), see page 11 for details and timings.

--- 000 ---

**(J) Sunday 15th September, following the 10.30am service:** A party to celebrate Rob being licensed as a Lay Reader (see below).

--- 000 ---

**(M) Monday 16th September, 2.30pm:** Mothers' Union. Speaker, Gilly Maxim.

--- 000 ---

**(J) Wednesday 18th September, 2.45pm:** Tea/Coffee & Cake, see page 9.

--- 000 ---

**(M) Thursday 19th September, 2pm - 4pm:** West Worcester Friendship Group.

--- 000 ---

**(V) Friday 27th September:** Fourth Friday Friendship Group. Look out for sign-up sheets in church or contact Sarah Cottrill for details.

--- 000 ---

**(J) Saturday 28th September, 10.45am:** Café Church@10:45am, see page 9.

--- 000 ---

**(J) Saturday 5th October, 9am:** Coach trip to Wells. FULLY BOOKED.

--- 000 ---

**(J) Saturday 30th November:** Community breakfast.

---

## *15th September*

The party to celebrate Rob's licensing is a bring and share luncheon. Everyone is welcome. There are two lists on the table at the back of church for people to sign up with what they may like to make or bring.

*Jenny English*

## *Licensing Service*

On Sunday 15th September at 10.30am in St John's, Rob Little will be licensed as a Reader (or Licensed Lay Minister, LLM) by the Bishop. This will be a Team Service to which all are invited.

The Reader Licensing Service normally takes place in the Cathedral on a Saturday, but as Rob is the only candidate this year, it is being held in his home church. This is therefore a great opportunity for us all to celebrate Rob's ministry, to give thanks for all that he has given as an ALM, and support him as he takes this next step at the end of two years of training.

As he does so, I would like to offer him congratulations on behalf of us all, and please do pray for Rob and Ellen at this special time.

*Phil Bradford*

---

## *Daily Offices*

From the start of September, the clergy plan to resume saying the daily office in church. This was something we used to do before Covid, and with Gilly's arrival in the Team, now seems a good time to reintroduce it. Clergy are required to do daily prayer, and we have of course been doing this in private for the last four years, but there is something important about offering prayers corporately in church that I have very much missed in that time, and I am very pleased that we will be doing so again. Parish churches are places of prayer at the heart of their communities, at which prayers are offered for those communities, and it is important that we do this.

The plan is that these daily offices will take place in St John's Church from Monday to Thursday. Morning Prayer will be at 8.30am all year. Evening Prayer will be at 5pm while we are in British Summer Time, and 4pm when the clocks are on GMT. While we hope to offer these services without too much interruption, there will be occasional days when other commitments might prevent a service happening, but we will be publishing the schedule for each week in the pew sheet.

Anyone is very welcome to join us for these services, either on a regular basis or just occasionally. They are led by one of the clergy and last around 20 minutes. We are also very happy to be given specific prayer requests, so do please contact us if you wish for a particular person or situation to be prayed for. Please do be in touch if you have any questions or would like to know more!

*Phil Bradford*



## *Events at St John's*

### *St John-in-Bedwardine*



Our next Messy Church is on  
Saturday 7th September, 4pm.

Please do come along – you'll be sure  
of a warm welcome!



Women's Breakfast Meetings  
for Friendship and  
Christian Fellowship

Why not join us?  
Everyone is welcome!

Our next meeting is on  
**Saturday 14<sup>th</sup> September**  
**9.00am until 11.00am**

St John-in-Bedwardine  
in The Blakefield Room  
Contact Margaret Rutter (425396)



### **ST JOHN-IN-BEDWARDINE**

**Open for Tea/Coffee  
and Cakes  
£2.00**



**Wednesday 18<sup>th</sup> September**  
at 2.45pm in the Church

**ALL WELCOME**

### **St John in Bedwardine**



**Join us for Fresh Coffee  
and Danish  
'Friendship and Thoughts'**

**At 10.45am on  
Saturday 28th September**

*Thought for the day by  
Ruth Reeves*

**ALL WELCOME**

## *Events at St John's*

# Little Lambs



**Mondays in Term Time at**

**St John's Church**

**10:00am to 11.30am**

**FREE!**

**Toys and Games, Art & Craft, Messy Play,  
Snacks and Stories, Singing**

**Birth to 4 years old and carers**

*For more details contact Sue Fairman on 07845 942962*

**Come and join the fun!**

## *Little Lambs*

*The first meeting  
after the summer break  
is on  
16th September.*

**THE GOOD OLD DAYS  
PRESENTS  
DISCOVER HISTORY**



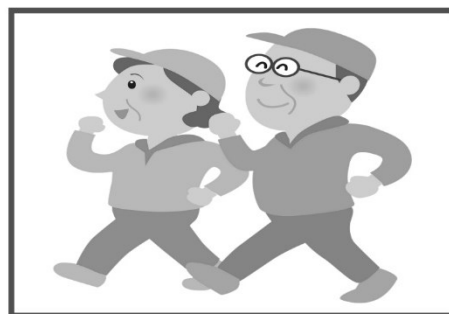
**TUDOR APOTHECARY**

**THURSDAY 12<sup>TH</sup> SEPTEMBER**

**1.00PM**

**£4 ADMISSION INCLUDES  
REFRESHMENTS**

## **WALKING CHURCH**



*This month,  
Walking Church is  
incorporated into  
Ride+Stride.*

*See page 11 for details.*

# *A day's retreat for Ride+Stride!*

## *Saturday 14th September*

Every year in September the National Churches Trust promotes the Ride+Stride. As advertised in the July/August magazine, I am once again organising a route that will combine the Ride+Stride with a “Day Retreat.” The day will include timetabled stops for Morning Prayer, a Bible Reflection, Prayer During the Day and Evening Prayer as well as including the activities for September’s “Walking Church.”

The route will include riverside and canalside footpaths, to enjoy the sounds and sights of nature as well as the hustle and bustle of the city centre. We will visit or pass about 16 churches. In total the route will be about 7.5 miles and we will start at 10.30am at St Clement’s for Morning Prayer and finish at St John’s at 4pm for Evening Prayer.

### **Plan for the day – the highlights!**

<b>10.30am</b>	<b>Morning Prayer</b>	<b>St Clement’s Church</b>
<i>Walk to St Stephen’s via Gheluvelt Park</i>		
<b>12noon</b>	<b>Bible reflection followed by Walking Church</b>	<b>St Stephen’s Church, Barbourne</b>
<i>Walk to the Cathedral via canal and various city centre churches</i>		
<b>1.15pm</b>	<b>Prayer During the Day</b> <i>Followed by lunch until 2.30pm</i>	<b>Cathedral</b>
<i>Walk back to St John’s via Diglis footbridge and other city centre churches</i>		
<b>4pm</b>	<b>Evening Prayer</b>	<b>St John’s Church</b>

Walking Church usually meets every other month on the afternoon of the second Sunday in that month and includes a discussion on a theme linked to the Gospel reading for the day, walking a different route each time. For our “Day Retreat,” the second walk of the day will include a discussion on a theme linked to our Bible reflection.

### **How you participate is up to you!**

The plan is for a group to walk the route with people joining for all or part of the walk and other people joining in for some or all the prayer activities.

- You could walk the full route with us and join in with all the prayer activities.
- You could drive or cycle between the stopping points and just join in with the prayer activities.

*Continued on page 13*

*Welcome to a new advertiser*

# Jeremy Massey Electrics

- ✓ Domestic, Commercial & Industrial
- ✓ All Work Guaranteed, Insured, including indemnity
- ✓ Re-wires and New Builds
- ✓ Additional Sockets, outside and inside
- ✓ Lighting including, Smart, LED, outside and inside
- ✓ Inspection and Testing - including rental properties
- ✓ Armoured cable installation
- ✓ EV Chargers
- ✓ CCTV

Telephone: 01886 888493

Email: [masseyjeremar@aol.com](mailto:masseyjeremar@aol.com)



Herefordshire and Worcestershire's  
friendliest home care and live-in care  
provider.



Live-in Care | Visiting Care | Respite | Companionship

Kemble at Home is a multi award-winning,  
local, family company providing  
**OUTSTANDING** Live-in Care for people in  
Herefordshire and Worcestershire.

[www.kembleathome.co.uk](http://www.kembleathome.co.uk)

Call Kelly Hennessey-Ford on 01432 382017

Email: [kelly.hf@kembleathome.co.uk](mailto:kelly.hf@kembleathome.co.uk)

*Would you like to  
advertise in this  
magazine?*

The Parish Magazine is published A5 in size,  
in black and white.

There are eleven issues each year,  
July and August being a combined issue.

An advert can be full-page, half-page or  
quarter-page in size.

The booking can be from one month to one  
year.

If you are interested to advertise, please  
contact Sue Hussell by telephone  
on 01684 893397 or by email at  
[suehussell4@gmail.com](mailto:suehussell4@gmail.com)

*Continued from page 11*

- You could just join in with one prayer activity.
- You could walk with the group and enjoy the scenery but not join in with the prayer activities.
- You could do this as a “sponsored” activity and seek sponsors and fundraise for whichever church you choose, or you could join in and treat it wholly as a retreat.
- You could join us for the morning until lunch or alternatively aim to meet us for lunch at the Cathedral and then walk back with us.
- You could just join us for lunch.

Anyone who wishes to join in will need to bring their own food or drink or aim to buy their own lunch along the way or at the Cathedral. There should also be an opportunity to purchase refreshments at St Stephen’s Barbourne, around 11.30am.

If you would like to find out more, please contact me, Philip Evans, via the Parish Office on 01905 420490 or philip.evans@wcv.church. If you would like to join in with some or all of the day, it would be helpful if you could let me know so that I can keep an eye out for you.

*Philip Evans*

---

## ***More about Ride+Stride***

Ride+Stride is a sponsored bike ride or walk, in which people from all over the country walk or cycle between churches, exploring and enjoying the countryside. The money they raise helps to preserve some of Britain’s 47,000 churches, chapels and meeting houses which are at risk of falling into serious disrepair.

Supported by The National Churches Trust and in partnership with County Churches Trusts, Ride+Stride raises money through events and volunteers getting sponsorship to either cycle or walk from church to church. Their sponsorship money is shared between their local churches trust (in our case the Worcestershire & Dudley Historic Churches Trust) and the church of their choice.

---

## ***Sundays and Principal Feasts in September***

Sunday 1st September: Fourteenth Sunday after Trinity

Sunday 8th September: Fifteenth Sunday after Trinity

Saturday 14th September: Holy Cross Day

Sunday 15th September: Sixteenth Sunday after Trinity

Saturday 21st September: Matthew, apostle and evangelist

Sunday 22nd September: Seventeenth Sunday after Trinity

Sunday 29th September: Michael and all angels

## ANDREW'S BUILDING SERVICES



Electrical, EV Installer, Internal Refurbishment & Maintenance, Kitchen Installer, Bathroom Installer.

I cover many aspects of the building trade, so please get in touch to discuss your needs.

Call / Text / WhatsApp me now on:

**07794402356**

Email: [abs.wr2@gmail.com](mailto:abs.wr2@gmail.com)



# JDS

## Electrical

For all your electrical needs  
Fully qualified and insured

**JON HALL**

**07528 183057**

[jds.electrical@outlook.com](mailto:jds.electrical@outlook.com)



# HOSKINS

## FUNERALS DIRECT

For Funerals arranged your way, whatever your budget.

Caring for your family, when you need us.

Simple or complex we can help.

Funerals, Traditional and Bespoke,  
Celebrations of Life, Direct Cremations

**07942 114560 - 24 hrs - It costs nothing to talk**

Keeping our prices manageable & helping you beat funeral poverty

Droitwich, Worcester, Pershore, Malvern and between.

**CALL NOW TO DISCUSS YOUR REQUIREMENTS - 07942 114560**



### Hoskins Funerals Direct

129, Astwood Road, Worcester

[www.hoskinsfuneralsdirect.co.uk](http://www.hoskinsfuneralsdirect.co.uk)

01905 27862



@HoskinsFuneralsWorcester



DirectHoskins



hoskins-funerals-direct

# *Little Lambs September 2024*

## *Hellos and Goodbyes*

I was delighted to return to all my friends at Little Lambs in July, after a wonderful holiday with my son Peter in Singapore, Vietnam and Thailand. [*see page 39 for an article about this. The Editors*]

Thank you so much to all who helped during June so Little Lambs could continue as usual. I know that you all had lots of fun and thank you to Amy for writing the July/August magazine article.

On 15th July, our last session, we said goodbye and well done to the children who are leaving us to start at primary school in September. We will miss you and your families, so please come and see us if you can one day.

The children were pleased to receive a copy of a little book called 'Our Father' as a present from us all at St John's. This book was written for young children and it is an illustrated version of The Lord's Prayer with some useful explanatory text and a glossary for adults so we hope that the children will enjoy it with their families.

We will return for more fun on Monday 16th September. Any offers of help would be much appreciated, please.

*Sue Fairman*

---

## *Anglican Rosary*

September, October and November are the final quarter of the ecclesiastical (church) year.

Traditionally October has been regarded as the month of the Rosary - a special aid to personal prayer and preparation for the Advent season that follows. Many Christians, indeed many churchgoers, know little about this aid/preparation and its effect on personal development.

With this in mind I propose to offer some opportunities in October and early November for those who wish to explore the use of the Anglican Rosary, and how to use a variety of sources to help the planning for its use during the church year and for life's personal pressures and difficulties.

I am happy to give further information to you individually. A list will be available at the back of St John's church but anyone will be welcome to attend the sessions.

*Arthur Miller*

# Computer Problems?

## We FIX computers!

**Sales | Service | Support**

Worcesters best loved, family run IT company...



**Custom build PC's**

**Gaming PC's**

**Repairs**

**Upgrades**

**Networking**

**Anti Virus & Security**

**Home User Support**

**Business IT & Support**



worcester-computers.com

01905 759111



worcester  
computers

visit us in-store | 40 Ombersley Road | Worcester | WR3 7HA



## *“What a difference a day (or decade) makes!”*

On 30th June I joined many others in Worcester Cathedral for the Ordination Service. Those from our team were, of course, there to support our new curate, Gilly, and I hope she had a richly blessed and deeply joyful day.

For me, as well as supporting Gilly, it was an opportunity to look back and reflect as, exactly ten years ago (to the day), or ten years and a day (to the date), I had been at my own Ordination Service - and what a day that was! As I participated in what we'll call "Gilly's service", seeing the joy on her face and those of her fellow deacons, hearing again the solemn vows and undertakings, it was a poignant and quite emotional experience.



Before Gilly's service, we'd had our own Team Eucharist and I discovered what a devious colleague I have. Having been away the week before, I had, as is my custom, also booked that Sunday off (to avoid sermon writing whilst on holiday), but Phil asked me to at least slip in for the end of that service to make sure he got away in time for Gilly's service. In fact, he'd organised cards and a presentation to mark my tenth anniversary in ministry - which is also my tenth anniversary here in West Worcester!

*Continued on page 19*

# RHINO WINDOWS AND DOORS LTD



**R**hino Windows and Doors was formed on values of the very best customer service and the highest quality installations.

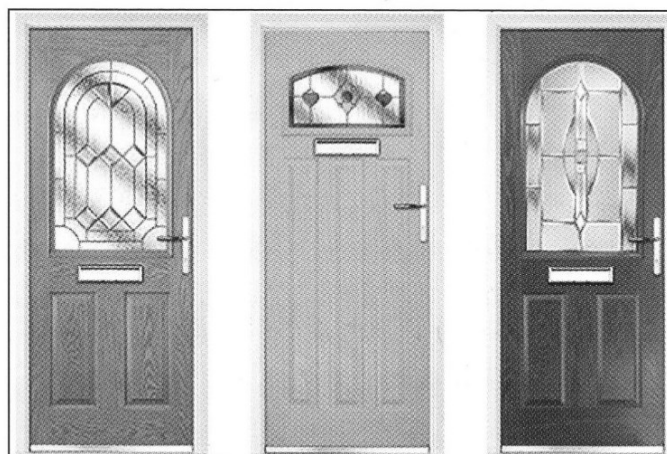
As we have continued to grow and develop our business, we remain committed to complete customer satisfaction.

Our services are wide ranging from UPVC windows and UPVC doors/ composite doors to conservatories.

Our windows and doors are made using the finest quality materials and manufactured to the highest standards.

All of our UPVC Windows and Composite Doors are energy efficient, reduce noise pollution and incorporate the latest security features.

We offer a range of designs options that will complement virtually any property style and age.



REPLACEMENT WINDOW &  
DOOR SPECIALISTS BASED  
IN WORCESTER

**01684 770437**

info@rhinowindowsanddoors.co.uk

CONTACT US TODAY FOR A  
FREE NO-OBLIGATION QUOTE



[www.rhinowindowsanddoors.co.uk](http://www.rhinowindowsanddoors.co.uk)

*Continued from page 17*

Phil, you are forgiven for being devious! It was a lovely thing to do. Thank you! Thanks, too, to everyone for the cards, flowers and messages of congratulation and best wishes. I was deeply touched by your kindness.

Looking back over the last ten years, I can hardly believe the things I've done that I'd never have imagined myself doing; conducting funerals without crying (one of my greatest fears pre-ordination); taking baptisms without dropping the baby; organising retreats and quiet days - and, unlikeliest of all among those who know me, doing craft for pre-schoolers! If anybody doesn't know how unlikely this is, mention papier-mâché to Amy and see how pale she goes!

There have been some things I've attempted which I'm particularly pleased to say have flourished; the St David's monthly coffee mornings, the GIFT group, Fourth Friday Friendship, West Worcester Friends and Walking Church (another unlikely success that I, famous for having no sense of direction, have never yet got us lost)! None of these could have succeeded without your support, so again, thank you!

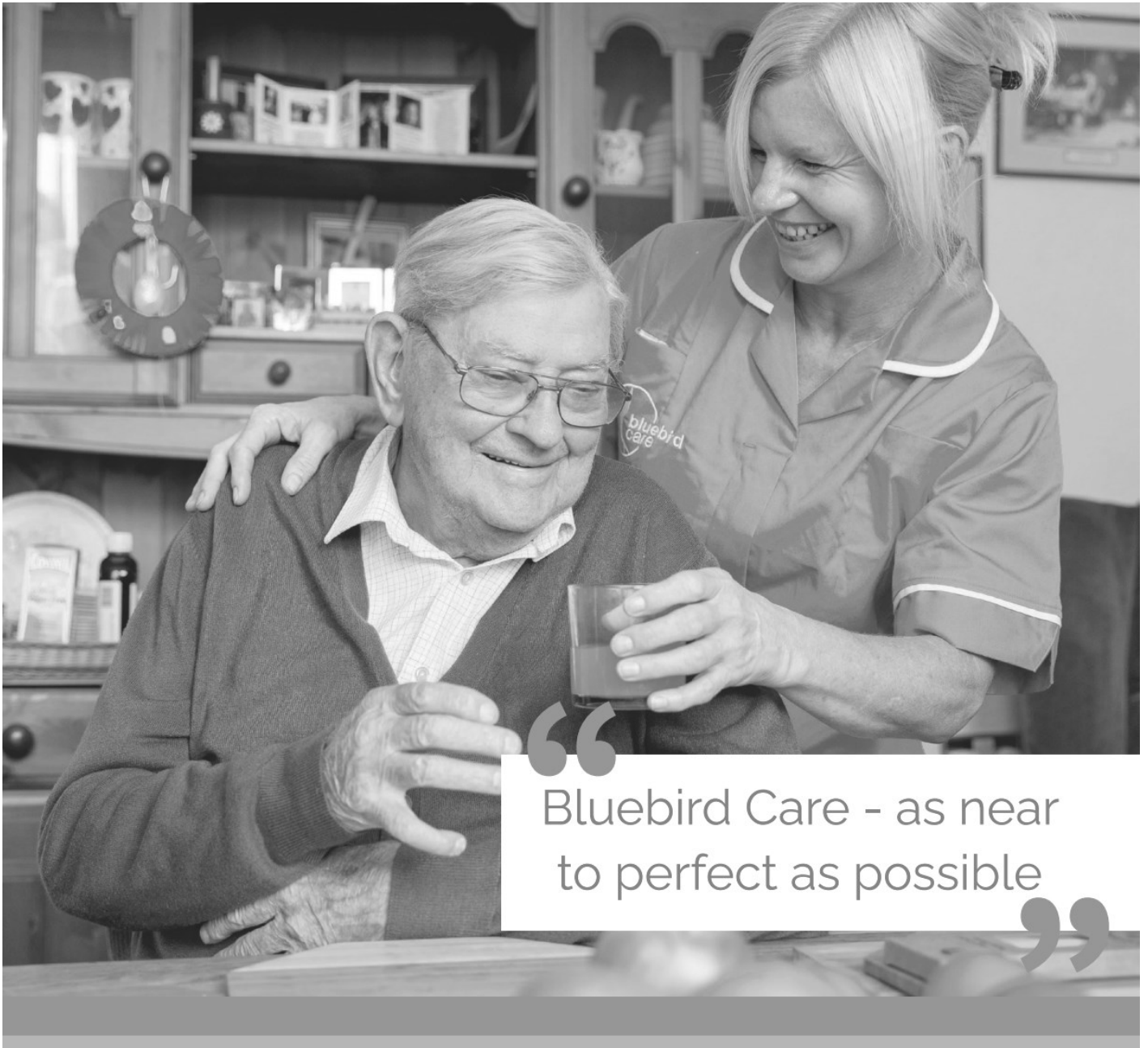
No decade, in anyone's life, whatever their line of work, will be all plain sailing. Over the years there have been times when I've been upset, disappointed or hurt by the ways things have gone, or people have said. Equally, I know I have caused others to feel these things. I hope you all know that it has never been intentional; that hurt or anger I've caused has either been unknowing or in the belief that the action I have taken is the right one.

On a personal note, too, so many of you have become true friends, sharing with me the ups and downs of family life. You have been there for me with quiet, prayerful support over the deaths of two dearly loved aunts and, even more so, through the final illness and death of my Mum. You have also rejoiced with me over my daughter's marriage, the arrival of my granddaughter, my daughter's qualifying and, most recently, my son's promotion. For all of this I thank you, and thank God for you all.

As Phil said in the last edition of the magazine, there have certainly been challenges over the last ten years, but I can honestly say that even the worst day in this job is better than the best day in any other job I have ever had and I have never, for even a second, regretted my first, very hesitant "yes" in response to God's call.

Thank you, and God bless you all.

*Sarah Cottrill*



“Bluebird Care - as near to perfect as possible”

## Care in your home, just as you like it.

You may be in a situation where you need an extra pair of hands to help with daily chores, or you may have complex needs that require more dedicated care.

Our well-trusted care services range from a 30-minute daily visit through to full Live-in care.

Call our friendly team today.

Bluebird Care Worcester & Wychavon

[bluebirdcare.co.uk/worcester-wychavon](http://bluebirdcare.co.uk/worcester-wychavon) | 01386 764830

[worcesterrandwychavon@bluebirdcare.co.uk](mailto:worcesterandwychavon@bluebirdcare.co.uk)

your life  
your home  
your care  
your way





## *Escape from Egypt*

July's Messy Church explored the story of Moses, focusing on the plagues and escape from Egypt. We certainly had some fun with the activities for this one!

### **Creativity**

Construction, cooking and clay made up the activities enjoyed by the congregation this week. We made pyramids with straws and clay, which not only helped us set the scene, but for older crafters reflected on Pharaoh's unfairness with his decree that his workers should now fetch their own straw to make bricks, but must also make the same amount of bricks as before. Making clay pots and bricks continued this reflection.



How many of the 10 plagues sent by God can you remember? While we didn't do an activity for every single one, we did make origami frogs and DIY boils with paper while talking about the others. This led to the origins of the Passover, which we discussed further through making flatbreads, as the Israelites were commanded to eat unleavened bread for 7 days. We know some of the congregation also took the recipe home to make more, as they tasted great (with an appropriate topping!)



If you're visiting St John's church, you'll also see the congregation's collage, depicting the final section of the story – the parting of the Red Sea. You'll see Moses as he and the Israelites race between the parted waves. Under the water are imaginative fish designed by the congregation.

### **Worship**

While the activities touched upon elements of the story, our worship is a chance to share the whole story in more detail and reflect on how we might have felt if we'd been the workers and the Israelites, ruled by a cruel Pharaoh and then running away.

### **Next Messy Church**

Messy Church took a summer break in August. Our next Messy Church is on Saturday 7th September. Follow one of the church Facebook pages to find out what the theme will be nearer the date!

*Beth Broadway*

---

## ***Prayers for Gaza, Ukraine and Sudan***

In September, we start a “new year” for praying for the world in which we live. Let us together light our 3 candles, representing Father, Son and Holy Spirit, binding our prayers together and placing them into God's hands.



This month we pray for Ukraine and their fight for peace and democracy. We pray for Gaza, the Palestinian people and their suffering. We pray too for the people of the Sudan and the famine that is raging in the Horn of Africa.

Lord Jesus, we pray today for the people of Gaza and the West Bank. For men women and children who continually have to flee from one supposedly safe place to another. Where even the beaches are not safe and where there are only bombed buildings to provide a refuge.

We find it impossible to imagine what it must be like to live where there is no safety, no sanitation, limited supplies of food and the sound of bombs and drones forever ringing in our ears.

Lord Jesus, we ask that you are in the midst of so much suffering. That your spirit will bind up the broken hearted and comfort the millions who suffer and those who grieve.

We have so many riches in our lives - help us to be faithful in our prayer and give time each day to praying for a resolution to the conflict in Gaza.

**Lord Jesus,                   hear our prayer.**

We pray for the people of Ukraine and their fight for democracy. They are now so dependent on world leaders for money, to buy arms and weapons of war.

We pray for those who are fighting on the front line that they will be given courage and strength.

We pray for those who are injured and maimed that they will receive care and understanding as they come to terms with the changes to their bodies and life.

We pray for those who are widowed and grieving.

We ask Lord that all who suffer may become channels of love and peace to their families and friends.

For the leaders of Ukraine who work to bring peace and keep people safe. May they be given wisdom and courage as they work towards Ukraine becoming a democracy.

**Lord Jesus,                   hear our prayer.**

Lord Jesus, we pray today for the people of Sudan. A country where many are starving because of poor harvests and food aid being blocked for political gain. A country experiencing global warming and where lives are in crisis because of the west's greed.

Lord, help us to be more conscious of how we use food and water. As we turn on a tap for fresh water let us remember those people of our world who can't do this. We pray for the political parties involved in Sudan that they may find a solution that brings aid and clean water to all.

**Lord Jesus,                   hear our prayer.**

I ask for each one of us who use these prayers, to spend time each day praying with God to bring peace and shalom for all who have need and who live in conflict in our World.



**Keep us faithful, Lord, in our prayer.  
Amen.**

*Jenny English*

## *Don't be dismissive of Jedi Knights!*

Well! Lots has happened since the last time I wrote. Back then I was in the throes of writing two assignments with a third looming, and now all the marks are in and the course is over! I am happy to confirm that the one involving the Very Hungry Caterpillar didn't get me kicked off the course and in fact it got me one of my best grades! Although, apparently, I was a little too dismissive of people who believe they are Jedi Knights. And even more surprisingly, the assessed conversation that I had been dreading for over a year was better than fine and was actually good fun and the time flew by! I got a decent grade for that too so I was perhaps a little over-confident when I came to my last essay that was a bit more conventional...apparently the tutor was "astonished that anyone could write an exegetical essay on Revelation and not refer to Isaiah" - I'll bear that in mind for next time 😊.

So, that seems to be it. I have been officially recommended to the bishop for licensing so, barring any last minute faux pas, we are on for the 15th September! I am frantically downloading all the fabulous course material from Queens while I still have access. I will miss that library and having all sorts of journals and resources at my fingertips. But new possibilities have opened up and I have taken up my first year's free membership of the Association for Promoting Retreats. I've been thinking about that for a while and it seems there is a centre near Ambleside so that will be hard to resist! I have also today been talking to someone who can help me to find a spiritual director. This is someone, usually outside your own parish, who can provide advice and support throughout your ministry. The truth is that I should have done this right at the start of my training but I'd always felt supported across all the West Worcester team and beyond so didn't feel the need, but, as I was gently told recently, that's not really how it works so sort it out! I am quite excited but I don't think the poor person knows what they have let themselves in for because while my training taught me lots, it has left me hungry for more so I am brimming with questions already!

I can't believe how quickly the time has gone by. I can't pretend it was easy but despite all the years of soul searching beforehand, from the moment I started I knew it was right. If I were to offer any advice based on my experience it would be to listen to God if He's speaking to you. Whatever it is He might be saying, be bold and trust him. This hopefully won't be my last magazine article but perhaps they will be less about my journey to become a Reader and more about my experiences of being one in future. Until then God Bless.

*Yours in Christ,  
Rob Little*



## *Annual Charabanc Trip to Weston-Super-Mare*

Our annual trip to Weston is always a sell out and thoroughly enjoyed by everyone that goes for the day trip to the seaside. This year we even had one of the organisers, Catherine Templeton, having to drive down as the coach was overbooked! The day started a touch on the gloomy side as the weather was not forecast to be brilliant and, as can be seen from this photo coats and rainwear



was much in evidence. On the way down we drove through some torrential rain but by the time we were south of Bristol the weather cleared up and we had no rain for the rest of the day. We were met by Catherine at the drop off point and everyone suddenly disappeared in all directions as they got off the coach - toilets and coffee being the first destination for many.

Sandra and I decided to walk to the far north of Weston to look at Weston Woods rising above the skyline of the town. On the way we stopped to look at the Old or Birnbeck Pier, we have walked to it before but this time there was more information about the Birnbeck Regeneration Trust, so I thought that I would tell you a bit more about the history of this pier.



The pier was originally built in the 1860s and is 1040 feet long. It is the only pier to connect the mainland to an island. It enjoyed many years of popularity during the Victorian period with the RNLI opening a station on the island in the 1880s.



Various buildings were added, including a Pavilion, Clock Tower, that can be seen in the photos, and it even had a switchback railway, which was an early roller-coaster. Tragedy struck in 1897 when fire devastated the pavilion and then again in 1903 when a great storm destroyed the

low water jetty, which was finally rebuilt in 1909. Many other attractions were added in the Edwardian era, then removed very soon after before the Great War. During WW2 it was used as a secret weapons development site and named HMS Birnbeck. After the war it was returned to the owners but failed to regain its pre-war popularity. The island had been used as a passenger ferry terminal for a service to Wales, but with the opening of the Severn Bridge the ferry services finished in 1979. Various ways to bring in the customers were tried over the years but in 1994 the Council enforced a closure notice on the pier. The RNLI continued to use it until 2014 when it was finally deemed to be unsafe.



In 2015 Birnbeck Regeneration Trust was reactivated and together with Historic England and North Somerset Council they began seeking a way to secure the future of the pier. In 2018 the RNLI also came onboard as the pier offers the best solution for launching their boats in Weston. In 2020 the Council served a Compulsory Purchase Order on the owners, as they had made no attempt to carry out any of the required repairs. The trust and its partners are now trying to raise £20m to restore the pier. For example, it needs 2850 planks to cover the full deck at a cost of £150/plank, nearly £500k just for the deck! There is a small visitor centre in the car park beside the pier so why not pop along to have a look at the pier and find out more about it, its history and its future.

After our walk up into the woods we went back to the centre and had fish and chips at the Old Thatched Barn restaurant, definitely worth a stop there. We were very interested to see how quiet the place was. It was the first week of the school holidays and as you can see from the photo below the beach was quite empty, well, deserted really.



We spoke to the waitress, and she told us that normally the season starts for them at Easter but this year with the bad weather, high cost of living etc. it had not started properly for them yet, very sad.

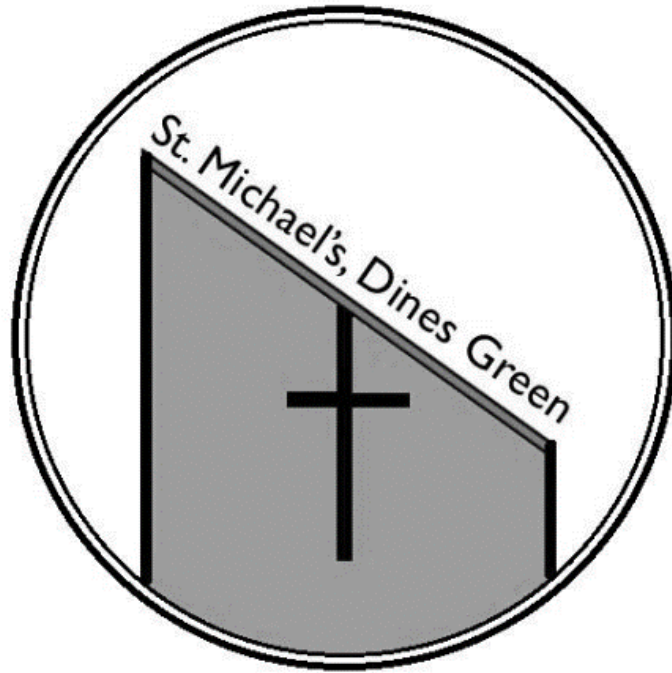


Luckily everyone turned up at the pick-up point and we said goodbye to Catherine and left Weston on time. Yet another highly successful coach trip to Weston and we were being asked on the way back if we would be coming back next year, guess that will be a yes!

*Colin Nash*

St. John-in-Bedwardine and  
St Michael's, Dines Green

*Time, Talents, Treasure*



# *Time, Talents, Treasure*

## **How will you respond?**

As a Church, by sharing our Time, Talents and Treasure we are able to support the community in so many different ways.

In the past year:

- We ran two Community Breakfasts.
- We have established a new worshipping community in Messy Church.
- Our work with children has seen our Children's Church grow.
- We have continued to support Little Lambs.
- Those who live alone following bereavement have continued to receive fellowship at the West Worcester Friendship Group.
- We have organised various social activities including history talks, coach trips and coffee, tea & cake.

See pages overleaf for more information.

If you would like to support our 'Time, Talents, Treasure' campaign, and you have not received an information pack, please ask for a pack at any service during September, or contact the Team Office (details on the inside front cover) and we will arrange for you to receive a pack.

# Time & Talents

Our churches exist because of the work of volunteers. Without people giving their time freely, the church would not be able to run. The more people who volunteer, the more the work can be shared out!

And what's more, we all have different skills or "Talents".

Whether you have a warm and welcoming personality, are musical or have a good listening ear, by bringing our various skills together we can achieve so much more.

For example, you could be involved with:

- Community Breakfasts:
  - Serving food
  - Welcoming people as they arrive
- Services:
  - Welcoming people as they arrive
  - Being a server
  - Reading from the Bible
  - Leading prayers
  - Joining the Choir or Music Group
- Helping to plan our events
- Governance:
  - Churchwardens
  - Member of the Finance Team
- Our 'digital presence'
  - Helping to look after our websites
- Caring for our buildings & grounds
  - Cleaning the churches
  - Gardening / churchyard
- Supporting the Parish Magazine:
  - Delivering the magazine
  - Helping with subscriptions admin

# Treasure

Like every household, community group or organisation, we have bills to pay.

And if we want to do more than just pay our bills, we need to be generous givers not giving grudgingly.

By pooling our money or “Treasure”, we can do so much more.

Collectively we have helped to fund:

- Training of new clergy
- Supporting church schools
- Free access to community activities such as Community Breakfasts and Little Lambs.
- Donations to other charities.

*In the last year, we have supported:*

- Children’s Society
- Our mission partners in Peru

## **What do we need your Time, Talents and Treasure to support?**

- To continue running and building up our outreach into the community.
- Working alongside our Mission Accompanier, to discern what God is calling us to do in our parishes and then for us to put this into action.

**“For God so loved the world that he gave his only Son”**

**How will you respond?**

## *Time + Talents = BBQ + Treasure*



On Sunday 7th July, St John's Church held a very successful and enjoyable barbeque, including excellent food and a bouncy castle. Thanks to all who gave their Time and Talents to make this such a successful event. It also raised nearly four hundred pounds of Treasure to support the overall work of our churches.

Thank you to Colin Nash and Sarah Wilkins for the photographs included here.

*Graham Evans*







## *Worcestershire Regiments involved in D-Day*

Over 90 people turned up to hear Paul Harding talk about the Worcestershire Regiments and their participation in D-Day and battle for Normandy.

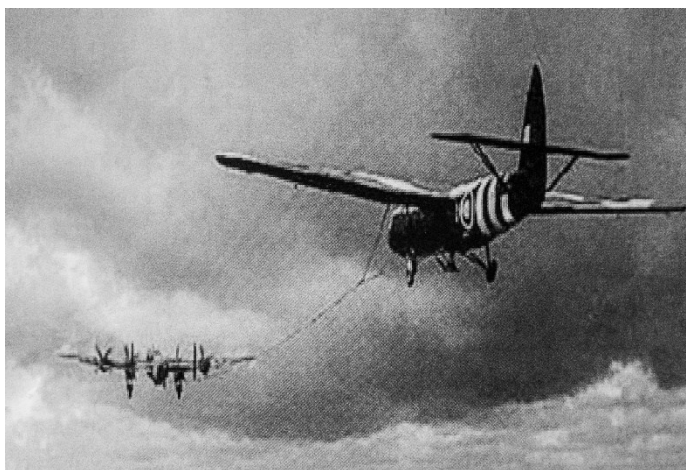
The two regiments involved were the Worcestershire Yeomanry, originally raised in 1794 and the Worcestershire Regiment, originally raised in 1694.



Paul's talk covered D-Day and the Battle for Normandy from the landings, both air and amphibious to the end of the Battle. It was meant to be a very quick battle to take Normandy, but it was a lot slower than was expected or hoped for.

The Worcestershire Yeomanry, renamed as the 53rd Worcestershire Anti-Tank Regiment, Royal Artillery, became part of the 6th Airborne Division before D-Day. They were a reserve unit but one of the first to land. Their Commanding Officer was Lt Col Teacher. Previously they had been deployed with 2-pounder anti-tank guns, but these were no longer effective against the newer German tanks, so they were upgraded to the 75mm Pack Howitzer.

211 Battery of the regiment deployed on 6th June and were taken over in 27 Horsa gliders with their 75mm pack howitzers from RAF Fairford. Each glider contained a trailer of ammunition, a 75 mm howitzer and a Willis jeep to tow them both and the gun crew. The gliders were not armoured and effectively crash landed, they could



easily be damaged by fence posts etc., sticking out of the ground.

The troops were also in danger of being crushed by the vehicles during landing as well, so it was a very dangerous way of deploying troops and many died or were injured during glider landings.



However, the Regiment were in the fourth wave to land (in the evening of the 6th of June) and amazingly they all landed safely in the correct place and within 30 minutes they were on their way to their initial locations to take on the enemy. They were the first Artillery Regiment to land by glider during the war. Until August 28th they were in the area around Ranville and together with paratroopers were responsible to stopping any potential counter attacks by the German forces.

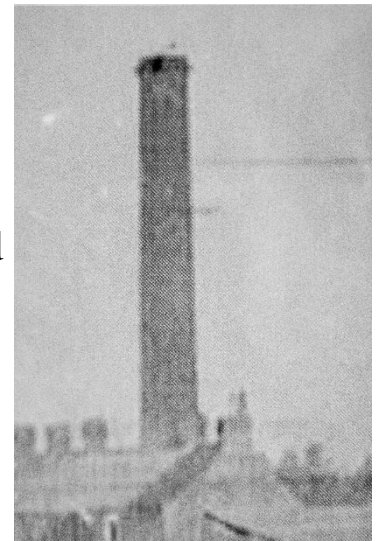


The first fatality of the Regiment was Lt Barras, on the 10th of June, followed later that day by Lt Blower, and it is now thought both could have been killed by friendly fire. Later batteries of the regiment were landed by sea on 11th of June.

Ranville had a tenuous link with Worcester in that they both had porcelain works and the chimney of the works in Ranville was used as an

observation post. The observer had to climb into the disused furnace and then climb up the inside of the chimney using rungs, some of which were missing, and others were broken!

Amazingly the Germans did not destroy the chimney, although a small cottage also used as an observation post was destroyed.



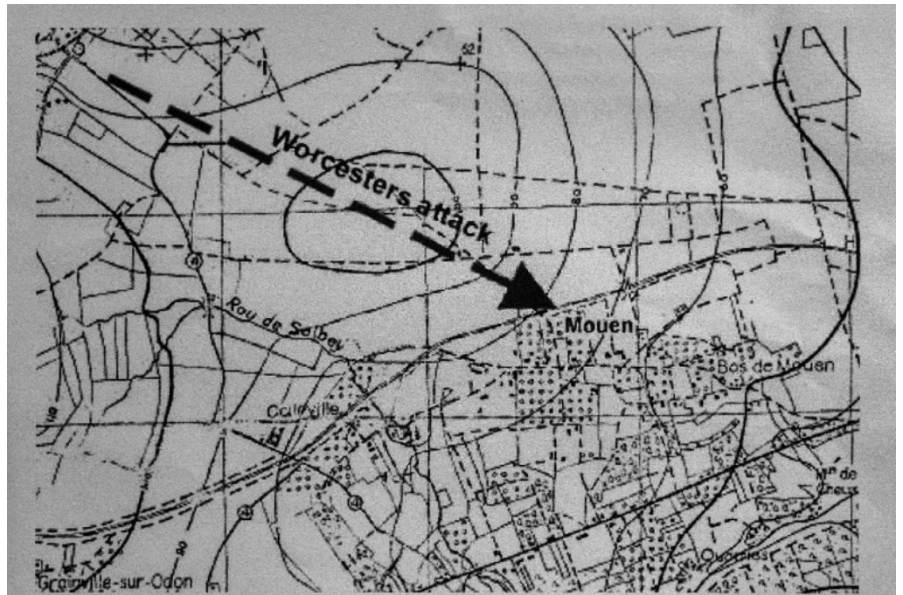
The Worcestershire Regiment was heavily involved in the North African Campaign and the 1st Battalion was almost wiped out. It only existed on paper for a while before being reformed with members from the 11th Battalion. To protect the colours of the Regiment they were laid up in the Cathedral until the end of the war. In 1944 the Regiment was sent to Heathville Camp in preparation for the landings. On 1st June they were even able to celebrate The Glorious First of June, which celebrated a 1794 battle at sea when the battalion was seconded to the Royal Navy to support their actions. Their cap badge still includes a Royal Navy crown to commemorate this battle honour.

The Worcestershire Regiment were held up by logistical problems in getting a free ship or boat to get across the Channel. The regiment finally landed on 22nd June. Although they were an infantry regiment, they had many vehicles with all their main equipment, but unfortunately these did not arrive for a few weeks. At Cheux, there was a major incident and one of the universal carriers, which was carrying ammunition, caught fire and all the ammunition blew up, killing several members of the Regiment.



In another incident at Cheux, the officers of A Company were called to an 'O Group' on the side of the road, to be updated with the latest orders. A mortar round exploded killing all the officers in this image. The Company Sergeant Major was able to keep the Company morale up until more officers were sent to the company.

At Mouen, the Regiment was ordered to take an orchard that had German troops and tank inside it. Several attacks had taken place before and failed because they had attacked from the flanks where the Germans expected the attacks to come from. Lt Col Harrison decided to put in an attack from the front and put down heavy artillery fire and smoke and started moving forward at 6am. By 8am the attack had been successful, and it was later described by one General as 'the slickest attack of the war.'



A young girl Francois Clement was found dead by the Regiment, and they buried her in the garden of the house. They found a photo of the girl in the house and later Lt Col Harrison wrote to the family to say what they had done, and that family still has links with the regiment to this day.

At one point during the preparation for the attack Lt Col Harrison and Major Clark were together. They were both solicitors before the war and they decided that they would form a partnership after the war. That was the foundation of Harrison Clark solicitors, now HCR solicitors, based near the Cathedral by the Elgar statue.

*Colin Nash*

## *Leukaemia Awareness Month*

Once again, it's September, and it's Leukaemia Awareness Month. Every year 41,000 people in the UK are diagnosed with a type of blood cancer such as leukaemia. This makes it the fifth most common type of cancer in the UK. It is responsible for 16,000 deaths a year, making it the UK's 3rd biggest cancer killer. People of all ages can be affected by leukaemia and it is often diagnosed late because symptoms are not well recognised.

As some of you may know, I was diagnosed in 2014 with chronic lymphocytic leukaemia. Chronic means it develops slowly. I am lucky, so far, in that I have not needed treatment but this particular leukaemia is a cancer of the immune system. My lymphocytes are mainly immature so they are not able to make the antibodies, immunoglobulins and T cells (components of the immune system) in sufficient quantities to give me protection against infection. Since last year, I now take a prophylactic antibiotic through the winter months. CLL, as this cancer is referred to, is the most common of the leukaemias. It is an invisible illness, as many blood cancers are.

Early diagnosis does save lives. Many patients are only diagnosed after a routine blood test. The main symptoms include **fatigue, bruising or bleeding, repeated infections, joint or bone pain, fever, breathlessness** but can also include unexplained weight loss, swollen lymph nodes, enlarged liver or spleen, recurrent nosebleeds, tiny red spots on the skin and night sweats. Some patients have only been diagnosed after, themselves, insisting on a blood test.

Many of the leukaemias can be treated and controlled with modern drugs and treatments but early diagnosis is the key.

*Margaret Miller*

---

### *Thank you!*

I just wanted to express a huge thank you again for hosting our Activity Wednesday group at the Tea & Cake afternoon on 17th July! All of our members had a brilliant time and left with smiles on their faces!

We have posted a video from the visit on our social media. Here is a link to the video on Facebook which you should be able to watch with or without an account: <https://www.facebook.com/reel/850299733168631>



*Beth Hiatt (via Jenny English)  
Data and Impact Officer, Worcester Snoezelen*

**Your Local Worcester Home Care Company**



*"Carers are always so friendly and helpful, always on time and couldn't do enough for me. Would recommend to anyone."*

**If you need care or have older parents, whose health has taken a sudden change, we can tailor responsive, companionship led care from 30 minutes through to 24/7 care in your own home.**

**01905 950 409**

**[www.severnvalhomecare.co.uk](http://www.severnvalhomecare.co.uk)  
[care@severnvalhomecare.co.uk](mailto:care@severnvalhomecare.co.uk)**

Good



Homecare  
Association



**Your local, award winning, home care company**

## *Memories of Temples in Thailand*

My son Peter and I enjoyed a fabulous week's holiday in Thailand in June. It was my first visit to Thailand and for Peter to visit the country outside Bangkok and the south. It was wonderful to explore this wonderful and very varied country together from two centres, Chiang Mai in the North and the capital city of Bangkok.

Around 95% of Thai people are followers of Theravada Buddhist religion. Theravada means "the way of the elders" and is one of the two main schools of Buddhism. Buddhism is the origin of the moral code and cohesion of Thai society. Religious ties are maintained by a temporary ordination, from 5 days to 3 months, of all young people who study the Buddha's teaching in a monastery.

There are many beautiful Buddhist temples in Thailand. Some are very ornate with many treasures to see; others are less decorated but very moving too. Many are of course very old. A few are newer and one was very modern and different to all the others. We were very pleased to visit some, either on our own or as part of organised excursions, and to learn about Buddhism and its importance to the Thai people and their culture.

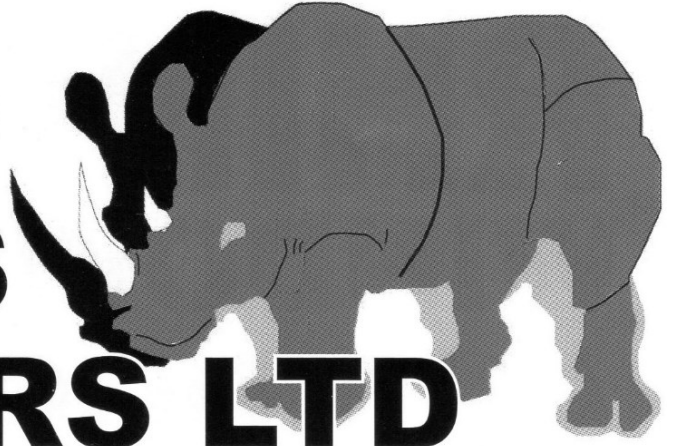
On our first day we visited Wat Phabong (Wat means temple in Thai) in the centre of Chiang Mai (on the right). This was a good start for us and set the scene for more.

Later on, we visited Wat Ket Karem in Chiang Mai which was busier. Both temples showed us traditional features such as red pillars inside, the roof structures, the gongs and impressive dragons guarding the entrances. We saw monks dressed in orange garments in all the temples except the more modern ones and were able to enter the worship halls to see the Buddha.

*Continued on page 41*



# **RHINO WINDOWS AND DOORS LTD**



**A TILED ROOF WILL KEEP YOUR CONSERVATORY  
WARM IN WINTER & COOL IN SUMMER**

Rhino Windows & Doors can enhance your conservatory and make it easier to enjoy year-round – we can even add skylights and lighting. Contact us today for details of how to get more from your conservatory

**TELEPHONE:  
01684 770437**  
info@rhinowindowsanddoors.co.uk

REPLACEMENT WINDOW &  
DOOR SPECIALISTS BASED  
IN WORCESTER

CONTACT US TODAY FOR A  
FREE NO-OBLIGATION QUOTE

**www.rhinowindowsanddoors.co.uk**



*Continued from page 39*

On another day we enjoyed an excellent day excursion with a very enthusiastic guide to the Doi Inthanon (Thailand's highest mountain at 2565m, Doi means mountain) National Park. As well as hiking, admiring waterfalls, meeting local village people, drinking and buying coffee we visited the King and Queen's pagodas at the top of the mountain. This was a very atmospheric visit in the mist and rain but we were prepared with our waterproofs and keen to experience everything. The hydrangeas and trumpet lilies along the stairway to the pagodas were fantastic too. Inside the pagodas were beautiful intricate carvings showing the story of Buddha and all was very symbolic.

Our last full day excursion from Chiang Mai was to visit the fascinating area of Chiang Rai and the Golden Triangle in the far North, where Thailand, Laos and Myanmar meet, and the countries are bordered by the Mekong river. This area was a centre for opium production and now coffee is one of the main crops. Again, we had a very interesting and knowledgeable guide who was a practising Buddhist, so it was all fascinating.

We visited the very new and very different Buddhist temple of Wat Rung Khan, commonly known as the White Temple (on the right).

This temple was opened in 1997 and was a very popular tourist destination. One of the most memorable sights at



the temple from the bridge to the temple centre were the hundreds of outstretched white hands that symbolize unrestrained desire. The bridge proclaims that the way to happiness is by foregoing temptation, greed and desire.

Thank you for reading my article which is a brief description of some of our beautiful and very memorable experiences from our lovely holiday in Thailand.

*Blessings to all  
Sue and Peter Fairman*



# La Fleur Florist

Weddings    Funeral Tributes    Everyday Flowers  
Corporate Flowers    Special Occasions  
Garden Plants

Victoria Phelps  
36 Woodstock Road  
Worcester, WR2 5NE  
Tel: 01905 421820 or 07842258936  
lafleur@hotmail.co.uk  
www.lafleurflorist.co.uk

## Worcester Chiropractic Clinic

102 Bromyard Road, St Johns, WR2 5DJ

Expert treatment for a range of conditions:

- Sciatica
- Headaches
- Sports Injury
- Trapped Nerves
- Back Pain
- Carpal Tunnel
- Tendonitis
- Osteoarthritis
- Neck Pain
- And more...

01905 428 956

## *Joint Council (JC) meeting, May 2023*

The JC met to consider the single issue of whether to sell or re-let the now-vacated property at Heron Close. Phil explained that the property needs significant work (estimated at £50,000) to let again. The other option is to sell the property. It was noted that if money from the sale was carefully invested, we may have a greater income than from rental.

There was concern that the capital from the sale could go to the diocese rather than our church. Research in the records will clarify this point, and whether the capital can be spent or only the income.

The Joint Council agreed in principal to the sale of the property, subject to any considerations which might arise. Nine members were in favour and one was against. Five absent members had expressed their support of the proposal.

---

## *Joint Council, June 2023*

### *Summary of the minutes*

Phil Bradford welcomed everyone to the meeting. There were 14 members present, with apologies from 4 members.

On the sale of the Heron Close property, Gordon Templeton reported that he has been in contact with the diocese about the sale process. Graham Evans reported that the money from the sale of the property will be an endowment (it must be invested and we will be able to spend only the interest). There is no doubt that the church owns the property.

The JC agreed to the reauthorisation of the following ALMs: Jenny English, Margaret Rutter, Graham Evans, Mike Dowling, Chris Rees and Rob Little (Worship), Philip Evans (Worship and Parish Administration) and Sylvia Render (Pastoral).

The JC appointed officers for 2024-25: Lay Vice Chair (Colin Nash), Secretary (Fiona Templeton), Independent Examiner (Duffy Regan), Members of the Standing Committee (Clergy, all four churchwardens and Philip Evans, Colin Nash, Sue Bale, Fiona Templeton and Graham Evans). Philip Evans was appointed Treasurer until the end of the year, as an interim measure, on the understanding that his workload is to be reduced. Graham Evans was appointed as Electoral Roll Officer for St John's. Phil will check about St Michael's Electoral Roll Officer.

*Continued on page 45*

# Safeclean<sup>®</sup>

BY  GUARDSMAN

**Quality cleaning services from  
the furniture care experts**



**Safeclean will help keep your  
home fresh, bright & beautiful**

- Carpets • Fabric & Leather Upholstery
- Curtains • Mattresses • Hard Floors

**Contact Elliot for a free, no obligation quote**

**Call: 0808 144 8161 or 07748 328 597**

**Email: [elliott@safeclean.co.uk](mailto:elliott@safeclean.co.uk)**

**Web: [www.safeclean-cheltenham.co.uk](http://www.safeclean-cheltenham.co.uk)**

Please mention the magazine when responding to advertisers

*Continued from page 43*

The JC agreed to form sub-committees to take care of some business and ensure that some things remain 'in view.' The following were agreed: Finance (already running - updated Terms of Reference (ToR) were agreed); Special Services (Philip Evans and Alice Evans will lead with input from the clergy); Charity Committee (ToRs and members are required); and Events/Fundraising (there will be a meeting soon to gauge interest).

Gordon reported from the Accommodation Committee. An energy audit has been carried out. Some of the items are routine maintenance, but the rest of the actions are expensive and do not give a good return. A structural survey (£528+VAT) will be commissioned to monitor the cracks in the building.

It was agreed to go ahead to resolve the kitchen power supply. Cost is likely to be about £2500. It was agreed to use money from the legacy.

It was agreed that Tom Amies (Estates Manager) will take on the role of managing agent of the properties owned by the church. Standing Committee was delegated to deal with this and any changes required to Tom's contract. There would need to be a contract to provide 24-hour emergency cover (i.e. not Tom or Church Officers).

The cost of flags and refurbishing the flagpole (£2040 + VAT quoted) was raised. The question was asked 'Do we need a flag?' This decision was deferred until Tom has some further cost information.

The guttering at St Michael's has still not been sorted by the landlord. Gordon will ask Tom to chase this up.

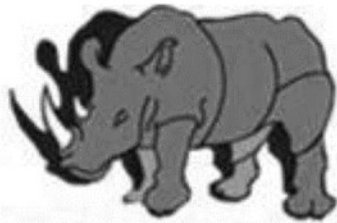
The Safeguarding Action Plan from the Parish Dashboard had been circulated in advance of the meeting and was reviewed. Various approvals were given to advance the actions on the dashboard.

Children's Church continues to run well. There was a discussion about ways to include children in meaningful ways during the main service.

Philip Evans gave a finance report and took the JC through some of the figures on the report and answered questions.

Ministry Share is our biggest item of expenditure. We received a letter from the Diocese congratulating us on paying 100% of 2023 Ministry Share. For 2024, we have been given grants towards it, but £5k less (for St John's and St Michael's) than we applied for. The final ask is actually in line with what we had originally budgeted for, so it was agreed to pay this as a

*Continued on page 47*



# RHINO ROOFING LTD

- FLAT ROOFING REPAIRS
- RE-ROOFS
- FLAT ROOFS
- CHIMNEY WORK
- FASCIAS
- SOFFITS
- GUTTERING
- LEADWORK
- RE-POINT RIDGES AND VERGES



## Genuine OAP Discount

If you are looking for trained professionals to fix your roof, look no further. Rhino Roofing Ltd is a very professional and established company. You can put your trust in us to give you the best as we have over 20 years experience and still counting! Contact us for a

**FREE QUOTATION – CALL US ON 01905831364**



<https://www.facebook.com/rhinoroofingltd>



[https://instagram.com/rhino\\_roofing\\_ltd/](https://instagram.com/rhino_roofing_ltd/)



<http://www.rhinoroofing.co.uk/>



[rhinoroofingltd@hotmail.com](mailto:rhinoroofingltd@hotmail.com)



Please mention the magazine when responding to advertisers

*Continued from page 45*

standing order over the rest of the year. The diocese now requires a financial plan to tackle the question of sustainability because they cannot continue to pay the grants at the present level. It was agreed that, as a Joint Council, a sustainable amount would be to pay for one member of the clergy in full supported by a ‘Low Income Community’ grant for St Michael’s which should be available long term.

The St John’s church clock needs maintenance (£2k-£3k). It was agreed to use Friends’ funds for this purpose. There is a strong public interest in this; the clock is integral to the fabric of the building, so this will be a good use of the restricted Friends fund.

The new Virgin Money (VM) bank account is now open. Not everything has run smoothly, but VM support people are helpful and problems are getting fixed quickly.

The “Time, Treasure, Talents” stewardship campaign will happen in September.

There was an update on GDPR, social media and email usage. Ten people will need to do GDPR courses.

Team Eucharists will in future be at the time of the normal service for that church.

*Minutes by Fiona Templeton (JC Secretary)  
Summarised by Graham Evans (JC member)*

## ***Sudoku Puzzle***

© 2008  
*KrazyDad.com*

***The  
solution is  
on the  
inside  
back  
cover.***

					1	3		
5			4	3		2		
	8	3				9		
	2		9					
	3						9	
					6		7	
		4				1	5	
		9		7	8			4
		5	2					

# **BEDWARDINE FUNERAL SERVICES**

**A COMPLETE & COURTEOUS 24 hr SERVICE**

PERSONAL ATTENTION

HOME ARRANGEMENTS

PRIVATE CHAPEL of REST

DAIMLER FLEET

MONUMENTAL MASONS

FLORAL ARRANGEMENTS

GOLDEN CHARTER PRE PAYMENT PLAN

**01905 748811**



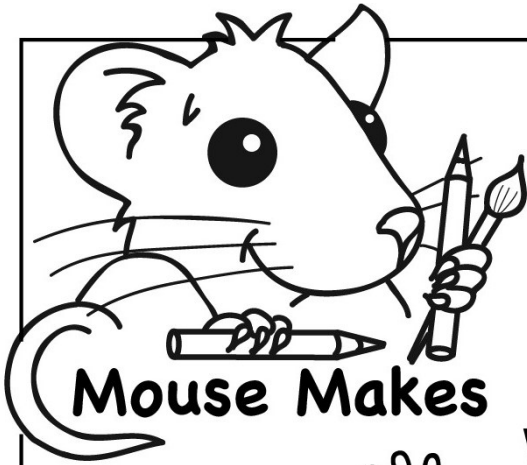
*INDEPENDENT & LOCALLY OWNED BUSINESS  
OFFERING*

*EXCELLENCE AS STANDARD*

*TO THIS COMMUNITY and SURROUNDING AREAS*

The Coach House, 30 Bromyard Road, Worcester. WR2 5BT.





"AND WHEN YOU PRAY,  
PRAY THEN LIKE THIS ..."

Where does Jesus say  
to go to pray?  
*Matthew 6:6*



What does God know  
before you ask Him?  
*Matthew 6:8*



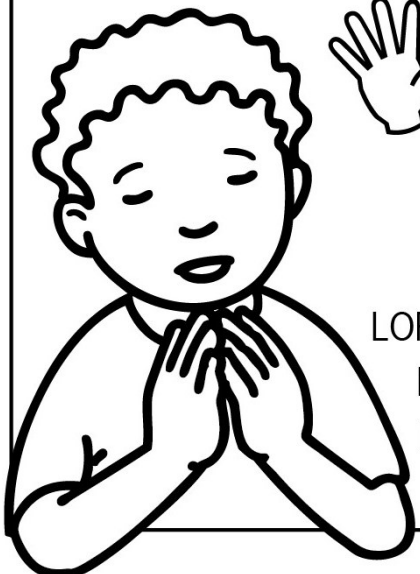
What can we ask God  
to deliver us from?  
*Matthew 6:13*

If you forgive others  
what will God do?  
*Matthew 6:14*



"Always be full of **joy**.  
**Never** stop praying.  
Whatever happens,  
always be **thankful**."  
*1 Thessalonians 5:16-18*

D L O R D S P R A Y E R  
L F W R E A R T H K S O  
D A I L Y K E D A S K O  
E T L V T H Y E L H D M  
B H L A M E N L L O O I  
T E M P T A T I O N N H  
S R A R A V I V W O E E  
S K N A M E T E E U V A  
I C J Y V N E R D R I R  
N O U R N A V B R E A D  
S M E W I K I N G D O M  
J E S U S U L Y O U R J  
N E E D S F O R G I V E



ROOM • PRAY • ASK • NEEDS • HEARD • JESUS  
LORDS PRAYER • OUR • FATHER • HALLOWED • HONoured  
NAME • THY • KINGDOM • COME • YOUR • WILL • DONE  
EARTH • HEAVEN • DAILY • BREAD • FORGIVE • DEBTS  
SINS • TEMPTATION • DELIVER • EVIL • AMEN



**Your home care experts providing quality home care in  
Worcester & Surrounding areas**

*home... there's no place like it.*

Being able to live at home can be one of the most important comforts in any person's life and because family and friends can't always be there, Home Instead are here to help in your area.

---

**Our award winning services include:**

- Companionship
- Light housekeeping
- Meal preparation
- Help with medication
- Shopping
- Personal care
- Specialist dementia and alzheimers care *and much more...*

If you would like an informal, no obligation chat to discuss your needs **OR** if you feel like you have the right qualities to become one of our Care Professionals please call:  
**01905 420404** and our experts will be at hand.

## *ST JOHN'S LIBRARY*

**Libraries Unlocked \*\***

Monday - Saturday: 8am - 8 pm

**Core (staffed) opening times:**

- |                         |                        |
|-------------------------|------------------------|
| • Monday: 2pm - 5pm     | • Thursday: 2pm - 5pm  |
| • Tuesday: 10am - 5pm   | • Friday: 10am - 5pm   |
| • Wednesday: 10am - 1pm | • Saturday: 10am - 1pm |

### *Events at St John's Library*

Weekly events:

LEGO Club, weekly every Saturday, 11:00am to 12:00pm.

Bounce and Rhyme, weekly every Tuesday, 11:00am to 11:30am.

Chess Club and Scrabble Club, weekly every Tuesday, 2:00pm to 4:00pm.

Crochet and Chat, weekly every Wednesday, 10:00am to 12:00pm.

Storytime and Song, weekly every Friday, 11:00am to 11:30am.

Other regular events:

Classic Film Club (5 & 19 September), fortnightly every other Thursday, 2:00pm to 3:30pm.

Crime Readers' Group (Friday, 6 September), monthly on the first Friday, 12:00pm to 1:00pm.

Photography Group (Friday 21 September), monthly on the third Friday, 2:00pm to 3:00pm.

Councillors' Surgeries (Saturday 7 September), monthly on the first Saturday 10:00am to 12:00pm.

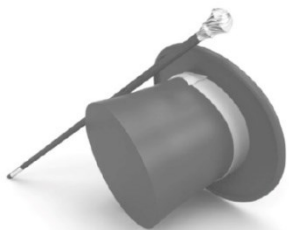
Meet the Police Safer Neighbourhood Team, St Johns and Bedwardine, on Tuesday 24th September, 10:30am to 11:30am.

---

\*\* To arrange a Libraries Unlocked induction please visit St John's Library during core opening hours when staff are available or call 01905 822722 to make an appointment.

For more information about Libraries Unlocked visit:

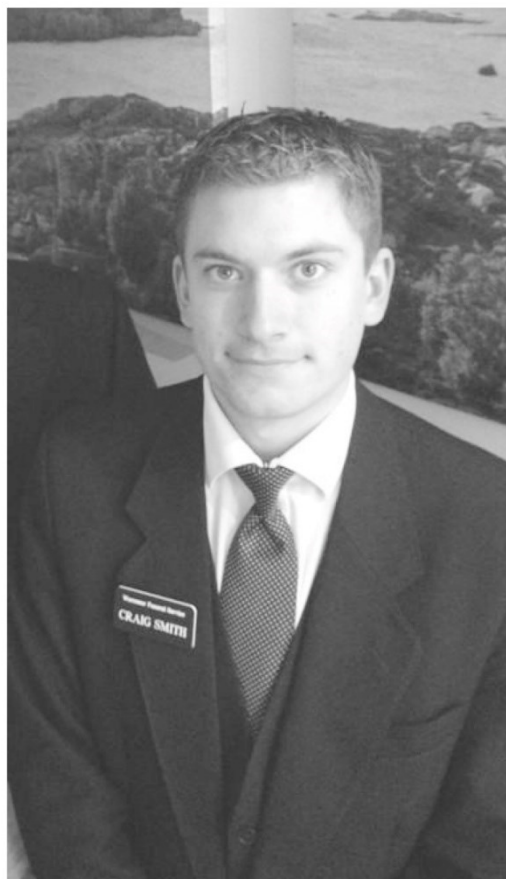
<https://www.worcestershire.gov.uk/council-services/worcestershire-libraries/libraries-unlocked>



# Worcester Funeral Service

## 01905 23499

Independent Family Funeral Directors



Craig is available 24 hours a day.  
Please call for any assistance.

Golden Charter   
Funeral Plans



Kilbury Drive, Worcester, WR5 2NE

[WorcesterFuneralService.co.uk](http://WorcesterFuneralService.co.uk)

*From the magazine archive, September 1930*

MOTTO FOR 1930

"Thou therefore endure hardness, as a good soldier of Jesus Christ."  
*II. Timothy II, 3*

# St. John-in-Bedwardine, Worcester.

Parish Magazine,—New Series, No. 69.

Price TWOPENCE.



SEPTEMBER, 1930.



**Vicar:** THE REV. C. T. POWELL, M.A., The Vicarage.  
**Assistant Curate:** THE REV. R. W. HAMILTON, M.A., 45, Comer Road.  
**Churchwardens** { Mr. J. W. Noake, 95, Bromyard Road.  
                          { Mr. John Dorrell, Link Elm, Malvern Road.  
**Organist and Choir Master:** Mr. H. G. Bishop, 78, St. Dunstan's Crescent.  
**Sexton:** Mr. Albert Smith, 7, Bozward Street.  
**Clerk:** Mr. W. H. Thomas, 17, Bromyard Road.  
**District Nurse:** Enquire at 15, St. John's.

## Upper Wick Chapel.

We are all very glad to know that Mrs. H. E. Powell has been thoroughly restored to health. Services in the Chapel will be held on the Second and Fourth Sundays in the month. Particulars will be found on the Notice Board of the Chapel.

## Preparation Sunday.

Kindly note that the last Sunday in September is Preparation Sunday, when I hope to preach special sermons both morning and evening in preparation for the Harvest Thanksgiving (Thursday, October 2nd), the Dedication Festival (Sunday, October 5th), and the full swing of autumn and winter parochial work (including Confirmation Classes).

## Special Devotional Services.

The day following Preparation Sunday is Michaelmas Day, and in the evening at 7-30 p.m. I want you to come to Church to unite in earnest prayer for God's direction and blessing in regard to the work referred to in the last paragraph.

# The Parish Magazine - SUBSCRIPTION FORM

Please tick one of the boxes below and fill in your details:

*Pick up  
at  
St John's*

*Pick up  
at  
St Michael's*

(£5) I will pick up my magazine from the church whose box I have ticked  
(subscribers' magazines are put out at the back of church,  
usually from the 4th Sunday of the preceding month).

(£5) I live in St John's but need my magazine to be delivered.

(£23.15) I live outside St John's and need my magazine to be posted. Postage and Packing costs  
£18.15 (Large Letter, 2nd class postage is now £1.55)

**Your details:**

Title:

.....

Forename:

.....

Surname:

.....

Email

address:

.....

Address (including post code):

		Total
Magazine subscription (as above)	£5 / £23.15	
Additional Donation (if applicable)		
GRAND TOTAL		

Send your payment in an envelope, or as a cheque made payable to St. Johns Parish Church, with this completed form to The Parish Office, 1A Bromyard Road, Worcester WR2 5BS. Or, to pay by bank transfer, please email [parishmagazine@wcv.church](mailto:parishmagazine@wcv.church) to give your name and address details, and you will be given a reference number. Then make a bank transfer to the following account:

Account number: 20150628

Sort code: 82-12-08

Account name: WORCESTER ST JOHN-IN-BEDWARDINE AND ST MICHAEL'S JOINT COUNCIL

Please put in the reference number you have been given, as the reference for the recipient.



Please make your money worth 25% more!

Please tick:

- I want St. John-in-Bedwardine Parish Church to treat the enclosed donation as shown in the Grand Total box above, as a Gift Aid donation.

**You must pay an amount of Income Tax and/or Capital Gains Tax at least equal to the tax that the charity reclaims on your donations in the appropriate tax year (currently 25p for each £1 you give).**

Signed: ..... Date: ..... / ...../20.....

**NOTES**

1. If in the future your circumstances change and you no longer pay tax on your income or capital gains equal to the tax that the charity reclaims, you can cancel your declaration.
2. If you pay tax at the higher rate you can claim further tax relief in your Self Assessment tax return.
3. If you are unsure whether your donations qualify for Gift Aid tax relief, ask the charity.
4. Please notify the charity if you change your name or address.



## *Puzzle solution*

7	4	2	8	9	1	3	6	5
5	9	6	4	3	7	2	8	1
1	8	3	6	5	2	9	4	7
4	2	7	9	8	3	5	1	6
6	3	1	7	4	5	8	9	2
9	5	8	1	2	6	4	7	3
2	7	4	3	6	9	1	5	8
3	1	9	5	7	8	6	2	4
8	6	5	2	1	4	7	3	9

*And finally....*



*None of his  
training had  
prepared Gary  
for this!*



## Sunday Services in the Worcester City West Team – September

	<b>St. John's</b>	<b>St. Clement's</b>	<b>St. David's</b>	<b>St Michael's</b>
<b>1st September</b>	10.30am Eucharist 5.30pm Evensong		4pm Eucharist	10.30am Eucharist
<b>8th September</b>	10.30am Morning Worship	10am Eucharist	4pm Evening Prayer	10.30am Eucharist
<b>15th September</b>	<b>10.30am Team Eucharist and licensing of Rob Little (St John's)</b>			
<b>22nd September</b>	10.30am Eucharist	10am Eucharist	4pm Evening Prayer	10.30am Morning Prayer
<b>29th September</b>	<b>10.30am Team Eucharist (St Michael's)</b>			
<b>6th October</b>	10.30am Eucharist 5.30pm Evensong		4pm Eucharist	10.30am Eucharist

The information above is correct at the time of going to press but please watch the weekly church newsletters and website for the latest information.