



St John-in-Bedwardine Parish Magazine

April 2016

40p



Welcome to
St JOHN-IN-BEDWARDINE
The Parish Church of St John's

St John's is far more than the most historic building on the Westside of Worcester; it is the centre of a worshipping and sociable community of people, and a resource for everyone in St John's.

The church is open most weekdays for people to drop in to visit or for quiet; to sit, pray or light a candle.

WEST WORCESTER CLERGY

The Reverend Dr CHRISTOPHER STUART (Vicar of St John's)	Day off Saturday
The Reverend PHIL BRADFORD	Friday
The Reverend SARAH COTTRILL (Assistant Curate)	Monday

CHURCHWARDENS

Gordon Templeton, Joy Job.

SUNDAY SERVICES AT ST JOHN'S

This is the usual pattern. Please see the other notices or the back cover of the Parish Magazine for the actual services in a month.

8.00 a.m.	Every week	Holy Communion (BCP)
10.30 a.m.	Every week except 2nd 2nd Sunday in month	Parish Eucharist with Children's Church Family Service with Children's Participation
5.00 p.m.	1st Sunday in month 3rd Sunday in month 4th Sunday in month	Evensong (BCP) Evensong (BCP) Service of Wholeness and Healing

WEEKDAY SERVICES

5.00 p.m.	Monday to Saturday	Evening Prayer
9.45 a.m.	Thursday (at St Clement's)	Holy Communion (BCP)
10.45 a.m.	Thursday (at St Michael's)	Holy Communion (Modern language)

PATORAL CARE: The church's Pastoral Care Group offers support if you are lonely, bereaved, or unable to attend church. Please contact Sylvia Render (tel 422654/email sylviarender@talktalk.net).

SAFEGUARDING: If you have any concerns about possible abuse of a child or vulnerable adult, please contact the PCC Safeguarding Representative, Jane Askew on 424811 or any member of the clergy.

Letter From The Clergy

“Children are the future of the church” – how often have you heard, or maybe used that phrase? I have to admit that it’s one I struggle with. Children are not the future of the church – they are a vital part of the church now with contributions to make and gifts to offer which are no less valid than the gifts they will be able to bring as adults. If we want them to feel inclined to offer those gifts in the future, then they need to see that they are valued here and now, for what and who they are, not as an insurance policy against a dismal future!



Last week I was in Salisbury for the second module of my MA and one of the topics we covered was spirituality in children. Actually, this was taught rather badly – being for the most part too anecdotal, but it did offer some scope for further reading and

Children are, I think, born with an innate sense of wonder

reflection and one comment did resonate with me: “Don’t assume that as far as spirituality is concerned, children are an empty basket which it is our job to fill!” Children are, I think, born with an innate sense of wonder; they will see beauty in and marvel at, things which many adults long since stopped noticing: the colour of a flower, the brightness of a rainbow, the feel of a piece of

bark or seaweed; the list is endless. They are uninhibited, (sometimes embarrassingly so), in their speech and actions and will question and consider things in a way which most adults find difficult if not impossible.

(continued overleaf)

Cover

Parish Breakfast 12th March 2016 – photograph by Colin Nash.

The Magazine

Copy for the May 2016 edition should reach us by Sunday 10th April. If you can, please use e-mail: magazine@stjohninbedwardine.co.uk. The May edition of the magazine will be available on Sunday, 24th April.

Opinions expressed in this magazine are personal opinions of the authors concerned and may not represent the views of the editors, our PCC or The Church of England. Such material is offered as a source of debate or reflection.

Unless otherwise directed, please send all written correspondence for the magazine to the Parish Office. *To subscribe or advertise in the magazine, please see page 35.*

(continued from the previous page) Further on in this magazine you will find a piece I wrote about the prayer squares many of you have been knitting for the hospital. I tell of a young girl who gave her mother one of the squares. It was a simple action and you may say it was just a child's act of kindness towards her mother who was upset. Of course it was; but it also demonstrates a level of love and empathy which has a spirituality about it, however unconscious that was on the part of the child.

As a church we are being asked to consider the characteristics of the Kingdom People and assess where we think we are in the various aspects. One of the questions we are asked to consider is the extent to which we are "dedicated to helping children and young people to belong and to be nurtured in faith." What does that mean and how do you think we should rate ourselves?

At St Clements there is the Worship for Everyone Service most weeks and at St Johns we have Children's Church, the Saturday children's activities and the youngsters are increasingly being encouraged to take part in at least one service each month, as readers of the lessons and by leading us in prayer. This will certainly nurture their faith as they learn more about it and are, hopefully, encouraged to question it and to try

**Are we still
guilty of trying
to force them
into our mould?**

to apply what they learn to their everyday lives. In both of our churches, I think the children are treated with friendliness and kindness and are affirmed in what they do. But is this enough? Are we still guilty of trying to force them into our mould, to recreate the present generation and their way of doing things in the younger generation? How far are we really prepared to let the

children take the lead? It is great to encourage them to help at our services and events but would we dare allow them to fully prepare and lead a complete service with minimal adult input; and would we then attend that service expecting to learn something from them? If the answer is "no" then we have a long way to go before we can say we are dedicated to helping children and young people to belong and be nurtured in their faith.

Of course, children and young people are only part of our congregation and we must no more try to foist their ways on the older generation than we should try to make them conform to the ways of the older generation. The spiritual needs of both groups – and those in between – are of equal importance and it is impossible to meet the needs of all in a single service. This is partly why a range of styles of worship is offered within the Church of England and I think we do very well in West Worcester. If you are prepared to be adventurous and attend services at different times and in different buildings to your "normal" routine, then I think most weeks you should be able to find something to suit your temperament and meet your spiritual need.

All of the above applies to what goes on in church buildings on a Sunday but as a local vicar once said: "Church isn't what happens on a Sunday!" In today's society, with so

many other demands being made on people's time and energy and so many (often more immediately attractive) options for things to do on Sunday, there has to be more on offer than sitting in a cold building, on hard seats, being told what to do when, and listening to adults delivering a lecture! This applies to adults and it certainly applies to children and young people. Church has to be relevant and engaging and this may well mean taking the church to the people rather than expecting them to come to us. It means engaging with them on their terms and on their ground – wherever that may be.

**the task of
establishing
relationships
with the young
people of our
locality**

Over the last year, we have been exploring the possibility of employing a Youth and Family Worker and this is now nearing fruition. The person or people recruited will be given the task of establishing relationships with the young people of our locality and offering a range of activities with a view, not of dragging them into church on Sundays, (though obviously it would be lovely if they decided they wanted to come!), but of making the love and goodness of God known and relevant to them. Much of the work will take place on week day evenings and in the running of holiday activities. No one person, however gifted or enthusiastic, will be able to do this alone. They will need our support – both in prayer and in practical assistance. The extent to which this is offered will largely reflect our true stance regarding how important we regard the nurturing of faith among our children and young people. Challenging and exciting times lie ahead for all of us!

Sarah

A Word From The Editors

Welcome to the April edition of our magazine. The fourth of the eight Kingdom People Characteristics is “Dedicated to helping children and young people to belong and be nurtured in faith” and Sarah has challenged us, above, to think hard about how we respond to that.

We pray for our church and its members, of all ages, as we move forward together and work out what this challenge means for all of us.

Graham and Sue Evans

One day some parents brought their little children to Jesus so he could touch and bless them. But when the disciples saw this, they scolded the parents for bothering him. Then Jesus called for the children and said to the disciples, “Let the children come to me. Don't stop them! For the Kingdom of God belongs to those who are like these children. I tell you the truth, anyone who doesn't receive the Kingdom of God like a child will never enter it.”

Luke 18:15-17

Dates for April 2016

Unless otherwise stated, the venue for all the events below is
St John's Church, or one of the church rooms.

See page

Sunday 3rd April: Second Sunday of Easter

See the back cover for Sunday services on this day

12.00 noon St John's Annual Parish Church Meetings

Saturday 9th April

10.30 a.m. Bridge day (play starts at 11 a.m.)

Sunday 10th April: Third Sunday of Easter

See the back cover for Sunday services on this day

Saturday 16th April

6.00 p.m. Bingo and Banger night

11

Sunday 17th April: Fourth Sunday of Easter

See the back cover for Sunday services on this day

Wednesday 20th April

7.00 p.m. Craft Group 7-9 pm

Saturday 23rd April

10.30 a.m. Table Top Sale

3.00 p.m. Children's Activities

15

Sunday 24th April 2016: Fifth Sunday of Easter

See the back cover for Sunday services on this day

Cafe@10.15

Keen eyed readers looking at the back of the magazine will spot that there is no Café Church shown for April. This is correct: Café Church is taking a month off before returning in May on a new day and time (fourth **Saturday** of each month at 10.15a.m.) and a new name: Cafe@10.15.

Thursday Morning Services: There is a 9.45am Holy Communion (Book of Common Prayer) each Thursday at St Clement's and a 10.45am service at St Michael's (Eucharist, modern language).

Sunday 3rd April

On Sunday 3rd April there will be a Group service at St John's Church at 10.30am. This will be followed at 12 noon by the St John's Annual Parochial Church Meetings.

In Memoriam

Eileen Bosworth	2 April 1955
Ethel Mary Teague	4 April 1973
Florence A Lewis	4 April 1994
Phyllis Manton	5 April 1974
Sydney Roberts	5 April 1980
Patricia Rosalie Surman	7 April 1986
Rev'd James William Newton	10 April 1988
Florence Lewis	12 April 1975
William Henry Fox	18 April 1984
Doris Drinkwater	18 April 1989
Alice Tipton	24 April 1972
Amelia Thomas	27 April 1942

Additions to In Memoriam are not automatic but must be specifically requested via the clergy.

From January 2017, in memoriam items are included until the fortieth anniversary.
An extension may be requested by family or friends of those named.

From The Registers

Baptisms, weddings and funerals which took place in February 2016

BAPTISMS: *We welcome you into the Lord's family*

Fiorella Grace Ingram

FUNERALS: *Rest eternal grant unto them O Lord*

d. 21st January 2016 Constance Farmer d. 6th February 2016 Dorothy Biggs
d. 29th January 2016 Wendy Houldey

From the register of services for February 2016 (4 Sundays):

Communicants 281. Total attendance at all services 575. There were no funerals/
memorial services in church (funerals above may have been at the Crematorium).

Prayer for the Easter Season

Living, Almighty God,

Thank you that by your Spirit living in me, made possible by the life, death,
resurrection and ascension of Jesus, you give me all I need.

Like Peter, you forgive and re-commission me.

Like Thomas, you meet me in ways tailor-made for me.

Lord, thank you for the daily personal "nudges" that assure me of your reality, your
presence in my life, just when I need so much to know you are here.

Thank you that we are Easter People every day, because of Jesus, and in His name we
pray. Amen. By

Daphne Kitching

Church Directory

CLERGY

Vicar of St John's and St Clement's with St David's	Rev'd Dr Christopher Stuart chris.stuart@westworcesterchurches.org.uk	01905 429773
Vicar of St Michael's, Dines Green	Rev'd Phil Bradford phil.bradford@westworcesterchurches.org.uk	01905 423794
Assistant Curate	Rev'd Sarah Cottrill sarah.cottrill@westworcesterchurches.org.uk	01905 426257
Rural Dean	Rev'd David Sherwin davidwin56@aol.com	01886 888664

ST JOHN'S PCC OFFICERS

Churchwardens	churchwardens@stjohninbedwardine.co.uk	
Gordon Templeton	gordtemp@btinternet.com	749025
Joy Job	joyjob@dsl.pipex.com	423051
PCC Lay vice-chair	Sue Bale	423257
PCC Secretary	Graham Evans pcc@stjohninbedwardine.co.uk	428667
Joint Treasurers	treasurer@stjohninbedwardine.co.uk	
Chris Rees		
John English		427822

THE MAGAZINE

We publish a Parish Magazine each month, except August. The magazine costs 40p to purchase and can be obtained from the back of church. Subscriptions are available at the discounted price of £4 per year. Contact the Parish Office or see the magazine for how to subscribe.

Articles on all aspects of Christian and parish life, letters, jokes and anecdotes are welcome - do contribute if you can. If you have a story to tell, please make contact. Please include your name as anonymous contributions will not be considered.

Editors	Sue & Graham Evans magazine@stjohninbedwardine.co.uk	428667
Advertising	Sue Hussell sue.hussell@talktalk.net	01684 893397
Subscriptions	Joan Tyler-Gunston	
Magazine Treasurer	Ian Thompson	
Distribution co-ordinator	Mary Hancock	

Any written correspondence for the magazine which cannot be emailed, please send to the Parish Office.

Church Directory

ST JOHN'S CHURCH OFFICERS

Child Protection Officer	Jane Askew	424811
Verger	Catherine Templeton	749025
Stewardship envelopes	Irene Allen	422684
Estates Manager	Brian Askew brian.askew@stjohninbedwardine.co.uk	424811
Parish Administrator	Liz Edwards liz.edwards@stjohninbedwardine.co.uk	420490
Archives Officer	Philip Evans	428667
Pastoral Care Coordinator	Sylvia Render sylvia.render@talktalk.net	422654
Press Officer	Philip Evans pressofficer@stjohninbedwardine.co.uk	428667
Organist & Choirmaster	John Brierley	358474
Music Group	Peter Yates pjyates194@btinternet.com	422565
Ringing Master	John Bower jandjbower@btinternet.com	07792 574554
Church Flowers	Eileen Cantrill Di White	422579
Webmaster	Philip Evans webmaster@westworcesterchurches.org.uk	

OUR CHURCH

St John-in-Bedwardine Church is an active Anglican church which has its roots in the Norman period. The church is open daily, as a haven of peace at a busy road junction in the St. Johns area of Worcester.

The church was originally built in 1165 as 'The Chapel of St John' – the parish church then being St. Cuthbert's in Lower Wick. When the church of St Cuthbert's was demolished in 1370, St John's became the parish church.



OUR PRIORITIES FOR 2016

Outreach and serving the community This includes understanding the community, social concern, value to the community, creating a buildings vision (to make our buildings fit for purpose to serve our objectives) and embodiment of West Side Collaboration as collaborating on projects.

and

Children and Families, Schools and Christian Nurture



Fellowship and Fund Raising
Events

at St John in Bedwardine Church
(unless stated otherwise)



Saturday 9th April	Bridge Day
Saturday 16th April	Bingo and Banger Night
Wednesday 20th April	Craft Group
Saturday 23rd April	Table Top Sale
Saturday 23rd April	Children's Activities

FUTURE DATES TO KEEP FREE

Saturday 7th May	Group Outing to Coventry
Saturday 14th May	Bridge Day
Saturday 14th May	Children's Activities
Wednesday 18 th May	Craft Group
Saturday 4 th June	Children's Activities (Morning)
Saturday 11th June	Tea on the Green for the Queen!
Saturday 25th June	St John's Parish Retreat
Saturday 9th July	St John's Village Fete
7th-9th October	Official visit by the Archbishop of Canterbury to the Worcester Diocese.
Evening of Friday 7th October	Event at the Worcester Arena: The Archbishop of Canterbury will be interviewed about his life and his ministry. This will be entertaining and engaging as well as thought provoking and evangelistic. Invite your friends!

Bibles, Bumps and Babies

An informal bible study group. Wednesdays 9.30am.

I **N** **G**
B and **O**



Banger Night

April 16th St John's Church 6pm

**£5 per person includes your food BYOB
and your games of bingo with fun prizes
Children welcome**

**Tickets available from the
Parish office or
Buds and Bows**

Buds and Bows 



*St John's Summer
Fete*

*Saturday 9th July
11am till 3pm*



“Comfort, comfort my people.” (Isaiah 40:1)

When I put an article in the church magazine a few months ago, asking for people who'd be prepared to knit some prayer squares for the hospital chaplaincy, neither Mum nor I imagined the scope of the response we'd get! It has been overwhelming and we and the chaplains at Worcester, Kidderminster and Redditch are deeply grateful.

The following is an example of the good these squares are doing.

One of the hospital chaplains gave a prayer square to a young mother who had suffered a miscarriage. The mother in turn gave it to her five year old daughter. The little girl became inseparable from the square, taking it everywhere with her – to bed, to school etc.

One day, the little girl came across her mother, having one of her “bad” days and crying. “Have this, Mummy,” she said, holding out the prayer square, “it will help you!”

Keep up the good work – a small square goes a long way!

Sarah Cottrill

Recycling for St John's Church

Thank you very much to all our Recyclers! Our last collection raised £25!

We can now include used UK and foreign postage stamps so please start collecting! Please remember that all the following items can be recycled:

- Any old or unwanted gadgets such as laptops, games consoles, satnavs, cameras and mobile phones;
- Unwanted or damaged items of jewellery, gold, silver or costume jewellery and watches, old UK or foreign currency of any age along with stamp albums, first day covers, presentation packs and postcard collections.

Everything that you donate can be turned into cash for our Church!

Please ask your friends, family and work colleagues to participate. If you have any queries then please contact me on W. 423051. Thank you!

Joy Job

Nun and Jeep

A nun driving her jeep in the Middle East ran out of petrol. The only container she could find was a chamber pot, in which she collected petrol and with great difficulty refilled the jeep. Some Sheikhs looking on called out: “Sister, we don't share your religion, but we admire your faith.”

Adult Confirmation

Confirmation is the opportunity for baptised Christians to adopt for themselves, the promises made on their behalf by parents and Godparents. A Confirmation Service will take place in Worcester Cathedral on the Feast of Christ the King (November 20th) and in the autumn I will be running a course for adults who are interested in being



Confirmed. This course will consist of about eight sessions in which we will explore our Christian faith together. Details of where and when the sessions will take place will be decided once I know how many are involved and we have discussed what best suits everybody. Please note that if you have not been baptised, you can still come to the sessions as Baptism can be offered at the same service as Confirmation.

If you are interested in this, please speak to me in church or contact me by phone – 456257 or email salocot@gmail.com

Sarah Cottrill



*The Bells of
St John in Bedwardine
will be ringing on
Thursday 21st April
to celebrate the 90th birthday of
Her Majesty the Queen and also on
Sunday 23rd April
for St George's Day
along with 12,000 other churches around
England*



Children's Church News

Our March Saturday Activity Session was very busy. Carrying on from Mothering Sunday we continued the theme of love and God's love for us. We made Easter cards and had a treasure hunt to find daffodils (don't panic, not the ones from the church green!) hidden in the church.

We missed Margaret in the kitchen, but she was much too busy cuddling her first grandchild.

As I write this I write with confidence that the joint St Clement's and St John's Worship for All service will have gone well. What is it said about working with children and animals, we had a donkey join us.

Our next Activity Session is Saturday 23rd April, do come along and join us. We continue to have Children's Church during the 10.30 service. It has been a busy March with making biscuits for Mothering Sunday and various tasks with the busy Easter period.

Watch what we are doing on Facebook or tel 424811 for more details.

Children's Church

Craft Evenings at St John's

Once a month on a Wednesday evening, we hold our informal craft evening from 7.00 – 9.00pm.

We are a small friendly group. Over the time we have been meeting we have made cards, paper flowers, garlands and much more. We have one rule and that is, what we start is finished on the night. The cost is £5.00 and that includes a drink and biscuits and all the materials you need.

We always need new ideas so if you have a craft you could share let us know, but if you would like to come and join us you would be more than welcome. Please telephone 424811 to let us know so that we can make sure we have enough materials. Next meeting Wednesday 20th April.



Jane Askew



Kingdom People

love • compassion • justice • freedom

The fourth of the eight Kingdom People Characteristics is:

**“Dedicated to helping children and young people to belong
and be nurtured in faith”**

Children and young people are not only the Church of tomorrow they are the Church of today. Jesus showed preferential consideration for children and we must do the same. If we do not do so, not only will the future of our churches be in doubt, they will be impoverished in the present. We have much to learn from children and young people in our parishes and schools and much to offer to them.

Provision

Sunday Schools have played a crucial part in the Christian formation of children and young people. A well-resourced Sunday School or Junior Church can still play a vital role in a church's outreach to young families. There is some very good material available from both Scripture Union and The Good Book Company.

Schools and colleges

In 2010, a report entitled Going for Growth set out a vision for the Christian nurture of children and young people. It spoke of 'every child and young person having a life-enhancing encounter with the Christian faith and the person of Jesus Christ'.

Initiatives like 'Open the Book' and 'Messy Church' are important alongside the traditional role of the church in areas such as chaplaincy and governance.

Involved

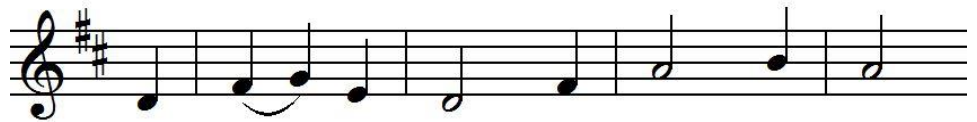
Some churches involve children and young people in decision making processes including strategic planning and the making of appointments.

Unchurched children and young people

Thought should be given to a strategy for making trusting relationships with unchurched children and young people.

<http://www.cofe-worcester.org.uk/mission-and-ministry/kingdom-people/>

Notes From The Choir



This month I am returning to the topic of favourite hymns. As I mentioned in these notes a couple of months ago, choir members were very keen to share their choices and to explain why they were so important to them. Having allowed ladies their turn first, it is now the turn of the men. Cecil from the tenor section of the choir chose the beautiful and powerful: When I survey the wondrous Cross. Like Mary and Marion previously, Cecil also associated this hymn with the passing from this life to the next as it was sung at his brother's funeral. However, he also talked of how he found its fervour particularly moving, especially as he remembered it clearly from his first singing experiences as a boy and how it evoked particularly fond reminiscences of Wales and his happy times growing up there.

From our choir's Bass section, Arthur too related how his choice of hymn had particularly dear memories. He was introduced to hymn singing from the age of 6, as his first school was a Convent school. From the age of 11 he was singing as a treble in church choirs, first at St Mary's and All Saints and then at St John's, both in Kidderminster. He recalled how it was at St John's that the Rev Tripass introduced the choir to new music and how it was from this time that he first sung Dear Lord and Father of Mankind. He told me that he felt this hymn especially spoke to his generation and how, over the years of vocal change from singing treble to tenor and now bass, the hymn still had real resonance.

Given that the theme of this month's magazine is how Kingdom people should nurture young people in faith, I find it really interesting that for both Cecil and Arthur, the hymns that mean the most to them today are ones that they associate not only with their present beliefs but with their journey of faith all the way from childhood. Both of these wonderful hymns still have the power to speak to us now but it may be that today's youngsters find different hymns or songs to carry with them on life's path. What is clear though is that the power of singing, and of coming together to sing, is a continuing force in nurturing and strengthening Faith.

Luise Horrocks



St Michael's Church

LIGHT LUNCHESES

.... recommence on the first Wednesday of May.

Welcome To A New Advertiser

Please mention the magazine when responding to advertisers



OPW Plumbing

Call: 07530063113/ 01905 312552

E-mail: williamsoli86@yahoo.co.uk

Heating | Bathrooms | Tiling

Sudoku Puzzle

					6			3
		1		7				
		5	2			4		
7	6				3			1
		8		9		2		
9			1				7	4
		3			7	5		
						9		
1			9					

© 2008 CrazyDad.com

The solution is on page 36.

The people of St David's wish

Her Majesty the Queen a very happy 90th Birthday!

St David's will celebrate the 90th birthday of Her Majesty the Queen with a tea party and some community singing on her actual birthday of April 21st. This should avoid clashes with other churches' celebrations around the official birthday in June.

Tea/coffee/squash and cakes will be served between 3.30pm and 4.00pm before the saying of a few prayers and then community singing of songs from each decade of the Queen's life.

Please join us on this very special day to celebrate and give thanks for the life and service of a very special lady.

Sarah Cottrill

Group Outing to Coventry

On behalf of all the four churches in the West Worcester Group, the Group Committee is organising the exciting opportunity of a joint day-trip to Coventry on Saturday 7th May.

We will visit Coventry Transport Museum and Coventry Cathedral. Both places are conveniently located in the City Centre if people want to explore other places of interest too. The Transport Museum recently re-opened following an incredible £9.5m transformation of the whole museum. On Saturday 7th May, it is hosting a special exhibition by the Audi 100 Coupe S Club.



A coach is booked to pick up from St. Michael's Church at 8.30am and from St. John's Church at 8.45am. We will arrive at the transport museum at about 10am. The coach will leave the museum at 4.15pm to arrive back at St. John's Church at about 5.30pm. An optional Fish & Chip supper will be served at 6pm at St. John's Church (which people who could not take part in the day-trip will be most welcome to take part in).

Final costs are still being worked on. The all-in price (including the Fish and Chip supper, but not lunch) will be about £15. Booking Forms are available from me.

Philip Evans

Sponsor the Vicar!

In April, Chris will be walking the **260 mile**

Pennine Way



from Edale in Derbyshire, to Kirk Yetholm on the Scottish borders

and hopes to raise **£2000** for

Acorns Children's Hospice

and

Maggs Day Centre for the Homeless

Give online at

<http://uk.virginmoneygiving.com/christopherstuart/>

Blog: <https://www.ramblingrevchris.wordpress.com>

From The Magazine Archive, April 1950

THINK ON THESE THINGS

THE Christian life cannot be lived in isolation from the rest of mankind. A man once said to Charles Wesley: "My religion is a private matter between God and myself". "If that is the case, sir," he replied, "it is not the Christian religion."

The Holy Communion should not be regarded as MY communion but as OUR communion.

Christian worship means the joining together of the whole family of God to render unto Him our worship and praise and thanksgiving.

† † †
THE story is told of Dr. Barnardo asking the children of one of his orphanages which of them had no father. Every hand shot up.

Then he asked them to say the Lord's Prayer, and afterwards said: "Now, hands up those who *have* a Father".

AN old washerwoman once said: "Im always happy because I put my religion into my washing".

Good advice this—for it means that EVERY day will be devoted to God.

† † †
THE love of God for us His children is eternal and unchanging. It is not given because of our virtues, nor is it withdrawn because of our unworthiness.

† † †
HE who keeps away from Communion because his religion is tepid and cold, resembles the man who says: "I do not want a fire because I am cold; I do not wish for a doctor because I am sick".

† † †
GOD often comforts us, not by changing the circumstances of our lives, but by changing our attitude towards them.

† † †
CARDINAL NEWMAN, writing of the trials of everyday life, said: "If there were no enemy, there could be no conflict; were there no trouble, there could be no faith; were there no trial, there could be no love; were there no fear, there could be no hope".



Parish Breakfast

On Saturday 12th March 2016 we held a Parish Breakfast at St John's Church. It ran from 8.30 a.m. to 10.30 a.m. with a full English cooked breakfast, toast, home-made marmalade, tea and coffee.

There was a lovely atmosphere as 128 breakfasts were served to many people who had not been into church before as well as folks from St John's and other churches. It was great to see people from Maggs and St Pauls, and so many children, and to experience the friendship and fellowship as people stayed and chatted long after they had finished eating.

The numbers exceeded all previous records, and we had to keep going out for more supplies; more eggs, more baked beans and five more loaves (*discuss!* - Editors).

Many thanks to all the 20 volunteers who made this possible, but especially to the kitchen team.

Jenny English





Thank you to Colin Nash for the photos and a huge “thank you” to Jenny.

The Editors



Open to people aged over 50, living in St Johns and Dines Green who want to meet new people and become involved in their local community.

Worcester Cinema Through The Ages

Wednesday April 13th St Johns Working Men's Club 12.30 - 2.45 pm

Opportunity to see photographs and share memories of cinemas gone by in Worcester and beyond

Including the Gaumont, with John Bee and his Compton Organ, St Johns Odeon, the Northwick and the Scala

Stand By Me is open to people aged over 50, living in St Johns and Dines Green who want to become involved in their local community.

We hold sessions monthly from 12.30 till 3pm at both St Johns Working Men's Club and The Green Centre Dines Green

We show films and have guest speakers, providing opportunities to chat and get to know your neighbours by sharing your skills and interests.

If you are aged over 50, living in the local area and would like to get involved, come along to see what it is all about.

Venues:

**St John's Working Men's Club,
3 Church Terrace, Worcester,
WR2 5BX**

**The Green Centre, Gresham Rd,
Dines Green, Worcester,
WR2 5QS**

For dates of other meetings in April and May please contact:

Lisa Owen, Stand By Me Project Manager, Worcester Volunteer Centre.

01905 24741 / Lisa@wvc.org.uk

Lisa Owen

Stand By Me Project Manager

Tel: 01905 24741 / 07725724735 / Lisa@wvc.org.uk



*St. John-in-Bedwardine
Parish Church*



PCC meeting 9th March 2016

The Vicar chaired the meeting and opened it with a prayer. 9 members were present. He explained that this meeting did not have the normal full PCC agenda as the usual purpose of this meeting preceding the APCM was to approve the accounts and the churchwardens' fabric report. On this occasion, the meeting had expanded to hear a guest speaker, and to cover some other urgent or quick items of business.

The guest speaker for this meeting was David Hawkins. David is a member of the Diocesan Advisory Committee on Church Buildings and worshipped at St John's as a child. He spoke to us about his thoughts on the possibilities for re-ordering the interior of our church. Some of the key points he made were:

- What are churches for?
- The church is for all people.
- The Church should be a meeting place for the community, it is God's space
- Simply re-ordering the inside of the building will not achieve anything.
- Our pews are a Victorian addition, but the building is much older. It was a community focus for many purposes (biggest meeting place).
- The Nave platform should be a focus, but the pews are still in straight lines facing East. Seating would be better in a slight arc.
- Could trim back the front edge of the top level of the Nave platform to give more space on the lower level.
- Have fun with the re-ordering – think outside the box.
- Give yourselves free reign.
- Think of adaptability.
- Think of colour – you can experiment with poster paint on wood; it just rubs off if you don't like it.

After David had left the meeting, it was agreed to see what comes out of the Parish Retreat, and then perhaps visit some churches over the Summer.

In Matters Arising:

- It was agreed that the Parish Retreat, open to all the congregation, will be held on Saturday 25th June, from 10am to 2pm at St Michael's church (bring your own packed lunch).
- There was an update on the Deanery Synod motion on Fairer Share: Deanery Synod has asked for more information from the Diocesan Board of Finance and will decide what to do at its next meeting, depending upon the response.
- The meeting approved two proposals received for use of 'Kingdom People Fund': The first is a proposal for Café Church to move from second Sunday 5pm to fourth **Saturday** 10.15am. Funding requested is £360 (for seven months). The

second proposal is to allocate £500 for a six month trial for the Parish Administrator to carry out targeted marketing and follow-up activities.

As an urgent operational item, the meeting discussed a safeguarding briefing from the Diocese. There was a discussion about the document received from the Diocese. It was agreed to compile a report on what we needed to do to ensure that we are compliant. Our safeguarding policies will be up for their annual review at our next full PCC meeting and this report will inform our review.

The meeting approved the formal 2015 accounts and the churchwardens' fabric report. Changes to account signatories and contact point (reflecting the handover of 'lead treasurer' from John English to Chris Rees) were approved.

The PCC supported Margaret Rutter and Rob Little going forward for training as ALMs (Worship Leader).

The meeting closed with all saying 'The Grace'.

Graham Evans, PCC Secretary

Cherry picker on site



On Thursday 18th February we hired a cherry picker so that the church Architect, Alan Simcox, could do a close inspection of the stonework on the tower.

Brian Askew





JUNIPER HOUSE RESIDENTIAL CARE HOME

'Keeping kindness at the heart of our care'



Our beautiful new care home includes all of the luxuries you'd expect along with some special touches that make it a true home.

Our residents spend their time how they wish whether that's enjoying a home-cooked meal, having their hair done in the salon, taking part in an activity or relaxing with a good book.

Carefully chosen for their kind and compassionate approach, our staff provide a range of residential, dementia and respite care.

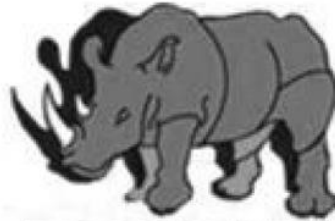
Please feel free to contact us at any time.

JUNIPER HOUSE RESIDENTIAL CARE HOME

2 Oak View Way, Worcester,
Worcestershire WR2 5FJ
Tel: 01905 676 950

www.sanctuary-care.co.uk

Sanctuary Care Limited is a subsidiary of Sanctuary Housing Association, an exempt charity



RHINO ROOFING LTD

- FLAT ROOFING REPAIRS
- RE-ROOFS
- FLAT ROOFS
- CHIMNEY WORK
- FASCIAS
- SOFFITS
- GUTTERING
- LEADWORK
- RE-POINT RIDGES AND VERGES



Genuine OAP Discount

If you are looking for trained professionals to fix your roof, look no further. Rhino Roofing Ltd is a very professional and established company. You can put your trust in us to give you the best as we have over 20 years experience and still counting! Contact us for a

FREE QUOTATION – CALL US ON 01905831364



<https://www.facebook.com/rhinoroofingltd>



https://instagram.com/rhino_roofing_ltd/



<http://www.rhinoroofing.co.uk/>



rhinoroofingltd@hotmail.com



Please mention the magazine when responding to advertisers



BLACKPOLE

TRADE & SAVE AUTOCENTRE

INTRODUCTORY OFFER

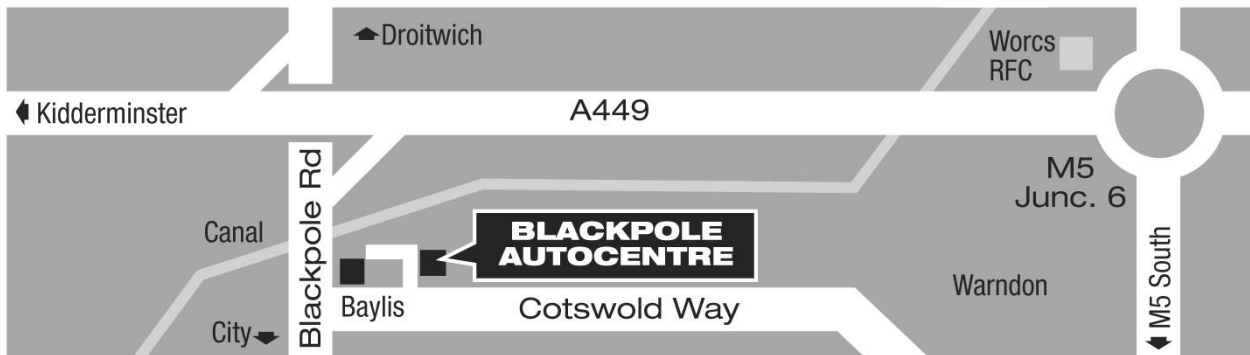
Offer valid until
30th September
2016 with this
advert only.
50% discount cannot
be used in conjunction
with any other offer.

**UP
TO**

50% OFF

- **MOTs**
- **SERVICING**
- **REPAIRS**
- **BRAKES**
- **TYRES**

the Good Garage Scheme



Plus a wide range of used cars from only
£1995 - check our latest stock online!

**Cotswold Way, Blackpole
Worcester WR4 9XN**

01905 670835

Right
Here in
Worcester!

www.blackpoletradeandsave.co.uk

Dr Janet Hails



Garden Solutions




Beds & Borders 🌿 Shrubs & Herbaceous 🌿 Pruning & Training ✂
 Fruit & Veg 🍓 Unusual Plants 🌿 Consultation & Coaching 📖
 Pots & Baskets 🪴 New Planting 🌸 Right Plant Right Place 🌱
 One Off Projects 🗓 Regular Maintenance Visits 📅

*RHS Level 3 Diploma with Commendation
 Over 30 Years Gardening Experience*

☎ **01905 748963** 📱 07933 263399 💻 dr.hails@btinternet.com

Room Hiring At The Church

The church has two meeting rooms and a large space in the church available for hire. All rooms have access to the church car park.

Blakefield Room	Suitable for up to 30 people: Fully fitted kitchen, including dishwasher; toilets, including one disabled toilet and a baby-changing facility; Tables and/or chairs.	
Burroughs' Room	Suitable for up to 12 people. Drink making facilities and toilet.	
The North Aisle	Seats 120 theatre style or seats up to 64 around tables. Tables and chairs are provided in a large open area with plenty of electric sockets. It is used to host exhibitions, meals and conferences.	

All access to the church is level and therefore suitable for wheelchairs. A toilet for the disabled is available.

For more information, please email hire@stjohninbedwardine.co.uk

SJM LOCKSMITH SERVICES

LOCAL • RELIABLE • INDEPENDENT

No Call Out Charge • Advice Given • Free Onsite Estimates

Are Your Locks Behaving Badly ?

Repairs • Replacements • Upgrades

We Carry Out All Aspects Of Door And Window Security
Emergency Call outs Due To Lost Or Broken Keys
Additional Door & Window Security & Insurance Approved Upgrades
Double Glazing Multi Point Lock Repair Specialist
Free No Obligation Home Security Survey
Clean & Tidy Workmanship

01905 73 15 36

07871 44 20 11

www.sjmlocksmith.co.uk

Podiatrist/Chiropodist

State Registered

HPC No. 14966

FOOT-NOTES UK

Racheal Sharman

BSc (Hons), MChS, SRChS

174a London Road

WORCESTER

WR5 2EJ

Diabetes Appointments

01905 360079

General Foot Care

Mob: 07974 650775

info@footnotesuk.co.uk



Worcester Funeral Service

01905 23499

Independent Family Funeral Directors



Craig is available 24 hours a day.
Please call for any assistance.

Golden Charter 
Funeral Plans

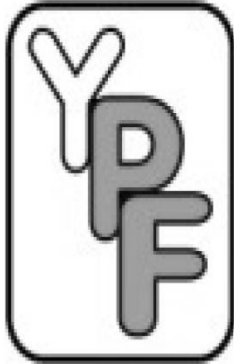


31c Barbourne Road, Worcester, WR1 1SA

WorcesterFuneralService.co.uk

Your Picture Framer

Call in and see our retail space and studio where we continue to provide our great customer service and fine bespoke framing.



- We can frame almost anything
- No obligation advice
- Home/Office visits available
- Computerised pricing – no guessing
- Out of hours appointments offered
- Latest techniques
- Top quality materials



www.yourpictureframer.co.uk
info@yourpictureframer.co.uk

01905 423300 or 07730 539168

2A Great House Road
Worcester
WR2 4HS

Worcester Chiropractic Clinic

102 Bromyard Road, St Johns, WR2 5DJ

Expert treatment for a range of conditions:

- Sciatica
- Headaches
- Sports Injury
- Trapped Nerves
- Back Pain
- Carpal Tunnel
- Tendonitis
- Osteoarthritis
- Neck Pain
- And more...

01905 428 956



REGENT RESIDENTIAL CARE HOME

'Keeping kindness at the heart of our care'



Regent includes all of the comforts you'd expect along with some special touches that make it a true home.

Our residents spend their time how they wish whether that's enjoying a home-cooked meal, having their hair done in the salon, taking part in an activity or relaxing with a good book.

Carefully chosen for their compassionate and kind approach, our staff provide a range of personal residential, dementia and respite care.

Please feel free to contact us at any time.

REGENT RESIDENTIAL
CARE HOME

School Road, St. Johns, Worcester
WR2 4HF Tel: 01905 337100

www.sanctuary-care.co.uk

Sanctuary Care Limited is a subsidiary of Sanctuary Housing Association, an exempt charity

Please mention the magazine when responding to advertisers

To advertise in the magazine

The Parish Magazine is published A5 in size, in black and white. There are eleven issues during the year, July and August being a combined issue.

An advert can be full page / half page / quarter page in size and the booking can be from one month to one year.



If you wish to advertise, please contact Sue Hussell on 01684 893397 or by email at sue.hussell@talktalk.net



*Mary wished she'd never mentioned
Fresh Expressions of Church*

Julie Davies
Qualified professional mobile hair stylist.

ADVICE
PERMING
CUTTING
COLOURING



NVQ II & III
HAIRDRESSING
NVQ TEACHING
ASSESSMENT
NVQ
CUSTOMER
CARE

Tel: 01905 427704
Mobile: 07977 590087

To subscribe to the magazine

The magazine costs 40p to purchase and can be obtained from the back of church. Subscriptions are available at the discounted price of £4 per year. We encourage you to subscribe as this means that we know more closely in advance how many copies to print and this makes things easier for our printing team.

Please contact the parish office and leave details of your name and address if you would like to subscribe.

Brian Askew Lic. Ac., M.B.Ac.C.
Traditional Five Element Acupuncture

Member of the British Acupuncture Council

Established 1994

18 Stanmore Road
Hanbury Park
Worcester WR2 4PW

Tel: 01905 424811
Home visits available

火
土
金
水
木

SUDOKU SOLUTION

2	7	9	4	8	6	1	5	3
4	8	1	3	7	5	6	2	9
6	3	5	2	1	9	4	8	7
7	6	4	5	2	3	8	9	1
3	1	8	7	9	4	2	6	5
9	5	2	1	6	8	3	7	4
8	9	3	6	4	7	5	1	2
5	2	7	8	3	1	9	4	6
1	4	6	9	5	2	7	3	8



HOME. There's no place like it.

Being able to live at home can be one of the most important comforts in an older person's life and because family and friends can't always be there, Home Instead Senior Care are here to help in your area.

Our Award winning Services Include:

- Companionship
- Light housekeeping
- Local transportations and errands
- Meal preparation
- Convalescence support
- Shopping
- Personal care
- Specialist dementia and Alzheimer's care *and much more...*

For us nothing is more important than providing a convenient and reliable care solution that works for everyone, from an hour to full time cover.

For an informal, no obligation chat to discuss your needs, OR if you feel you have the right qualities to become one of our CAREGivers please call: *Samantha Smith on 01905 420404.*



Please mention the magazine when responding to advertisers

Abbeyfield

WORCESTER



12 GREENHILL
LONDON ROAD
WORCESTER
WR5 2AA

INDEPENDENT LIVING FOR THE
ELDERLY WITHIN A CARING
COMMUNITY

Abbeyfield is a National Charity which provides supported, independent and affordable accommodation within easy access of the city centre

We currently have vacancies

If you are interested and would like to have a look around call Carole Stirling, House Manager on

01905 352106

(mornings only)

or visit www.abbeyfield.com

Jobs Done

**Interior Exterior Property Maintenance
Painting - Decorating - Tiling - Brickwork
Fencing - Pruning - Paving - Decking**

No Job Too Small

Colin Davis

Tel: 07767 025 574

Office: 01905 452 950





La Fleur Florist

Weddings Funeral Tributes Everyday Flowers
Corporate Flowers Special Occasions
Garden Plants

Victoria Phelps
36 Woodstock Road
Worcester, WR2 5NE
Tel: 01905 421820 or 07842258936
lafleur@hotmail.co.uk
www.lafleurflorist.co.uk



Feel right
at home in
Red Hill



Shaw Redhill offers a safe and secure home from home environment; for elderly people including those living with dementia.

- Specialist dementia care
- Nurse led caring
- First class catering & freshly prepared meals
- Spacious, single rooms with en-suite facilities
- Tailored activity schedules
- Home from home environment

Care enquiry line

0800 902 0092

customercare@shaw.co.uk

www.shaw.co.uk



Are you, or is someone you know, struggling with any of the following?

- ◇ Housework
- ◇ Getting washed or dressed
- ◇ Shopping
- ◇ Preparing food
- ◇ Taking medication
- ◇ Having time to yourself when someone depends on you

If so we can help!

We can support you in your own home, at reasonable cost, to help you with those things you are struggling with. All our staff have references, full training and a current DBS (CRB). We provide a bespoke service to help you remain independent in your own home. Call Karen for a no obligation chat on **01905 20495 or 07834 704945**

We are registered and inspected by Worcestershire County Council and CQC.

We are *LARGE* enough to provide and *SMALL* enough to care!



Contact

Tel: 01905 20495 / 07834 704945
Website: www.trucareworcester.co.uk
Email: karenspeak@btinternet.com

PHILIP TOMLINS LTD

The Funeral Director

A sympathetic and respectful service provided by a traditionally run business.

Every care and attention given.

Funeral Pre-payment Plan available.

WORCESTER

Telephone 422666


37 Bromyard Terrace

St John's

Members N.A.F.D.



Superb Organic Cleaning of Carpets, Curtains, Upholstery & Leather

Safe Organic Cleaning 

- Carpet and upholstery organically cleaned
- Oriental rug cleaning
- Curtains & mattresses deep cleaned
- Dust mite control
- Guardsman stain protection plans
- Spot & stain removal
- Anti-bacterial and anti-viral treatments available
- Leather cleaned and conditioned

Remove dust mites



Remove odour



Remove bacteria



For your free non-obligational quote call:

0808 144 8172

www.safeclean.co.uk

Safeclean[®]

The finishing care specialists from 

BEDWARDINE FUNERAL SERVICES

A COMPLETE & COURTEOUS 24 hr SERVICE

PERSONAL ATTENTION

PRIVATE CHAPEL of REST

MONUMENTAL MASONS

HOME ARRANGEMENTS

DAIMLER FLEET

FLORAL ARRANGEMENTS

GOLDEN CHARTER PRE PAYMENT PLAN

01905 748811



*INDEPENDENT & LOCALLY OWNED BUSINESS
OFFERING*

EXCELLENCE AS STANDARD

TO THIS COMMUNITY and SURROUNDING AREAS

1, St John's, Worcester WR2 5AE

SOME OF OUR CHURCH GROUPS

To avoid disappointment, in case the arrangements are different in any particular week, please contact the person shown before turning up at one of the groups.

BELLRINGING

St John's has a fine peal of eight bells. If you are interested in ringing, or learning to ring, please contact the Ringing Master, John Bower 07792 574554.

CHOIR

The choir practises on Thursday evenings and sings at most Sunday services. If you can sing (or are prepared to learn) do speak to the Choir Master, John Brierley, 358474.

MUSIC GROUP

This meets on Fridays in church at 7.30 pm to play contemporary Christian music, and provides music for worship on a regular basis. Contact Peter Yates, on 422565.

LITTLE LAMBS (TODDLER GROUP)

Birth to 4 years old and carers. Here at the church: Mondays 10.00 am to noon in term time. Free! Come and join the fun, or contact Amy Rees via the Parish Office.

BIBLES, BUMPS and BABIES

An informal bible study group. Contact Sarah Cottrill on 426257 for more details.

BIBLE STUDY FELLOWSHIP

Meets in the Burroughs room at 10 am every Wednesday for prayer and study. Contact Sylvia Render on 422654 for further details.

PARISH OFFICE

1a Bromyard Road
St John's, WR2 5BS
Tel: (01905) 420490

From the church car park, walk up the Bromyard Road side of the church to the green door.
Answerphone outside office hours.

e-mail: office@stjohninbedwardine.co.uk

Normally open for general enquiries and messages (please ring to check)

Monday: 10.30am to noon. Wednesday, Thursday, Friday: 10am to noon.

For booking baptisms and weddings: Please visit or telephone the office during the normal opening hours on Monday, Wednesday or Friday. Also open specifically for these bookings on the first Thursday of each month from 6.30pm until 7.30pm



Parish Website: www.stjohninbedwardine.co.uk

Group Website: www.westworcesterchurches.org.uk

The church of St John-in-Bedwardine is a registered charity, number 1152583.





Sunday services in the West Worcester Group, April 2016

	St. John's	St. Clement's	St. David's	St Michael's
3rd April	10.30am Group Eucharist with Children's Church followed by APCM	Joint service at St John's 6.30pm Act of worship followed by APCM	Joint service at St John's	Joint service at St John's
10th April	8am Holy Communion (BCP) 10.30am Family Service with Children's Participation	9.30am Eucharist 11am Worship for Everyone	11.15am Morning Prayer	10am Holy Communion followed by APCM
17th April	8am Holy Communion (BCP) 10.30am Parish Eucharist with Children's Church 5pm Evensong (BCP)	9.30am Eucharist 11am Worship for Everyone	6.30pm Holy Communion	10.30am Morning Prayer
24th April	8am Holy Communion (BCP) 10.30am Parish Eucharist with Children's Church 5pm Service of Wholeness and Healing	9.30am Eucharist 11am Worship for Everyone	11.15am Morning Prayer	10.30am Holy Communion
The information above is correct at the time of going to press, but please watch the weekly church newsletters and website for the latest information.				