



*St John-in-Bedwardine
Parish Magazine*

February 2016

40p



Welcome to
St JOHN-IN-BEDWARDINE
The Parish Church of St John's

St John's is far more than the most historic building on the Westside of Worcester; it is the centre of a worshipping and sociable community of people, and a resource for everyone in St John's.

WEST WORCESTER CLERGY

Day off

The Reverend Dr CHRISTOPHER STUART (Vicar of St John's) Saturday

The Reverend PHIL BRADFORD Friday

The Reverend SARAH COTTRILL (Assistant Curate) Monday

CHURCHWARDENS

Gordon Templeton, Joy Job.

SUNDAY SERVICES AT ST JOHN'S

This is the usual pattern. Please see the other notices or the back cover of the Parish Magazine for the actual services in a month.

8.00 a.m.	Every week	Holy Communion (BCP)
10.30 a.m.	Every week except 2nd	Parish Eucharist with Children's Church
	2nd Sunday in month	Family Service with Children's Participation
5.00 p.m.	1st Sunday in month	Evensong (BCP)
	2nd Sunday in month	Café Church
	3rd Sunday in month	Evensong (BCP)
	Last Sunday in month	Service of Wholeness and Healing

WEEKDAY SERVICES

5.00 p.m.	Monday to Saturday	Evening Prayer
9.45 a.m.	Thursday (at St Clement's)	Holy Communion (BCP)
10.45 a.m.	Thursday (at St Michael's)	Holy Communion (Modern language)

The church is open most weekdays for people to drop in to visit or for quiet; to sit, pray or light a candle.

The church's Pastoral Care Group offers support if you are lonely, bereaved, or unable to attend church. Please contact Sylvia Render (tel 422654/email sylviarender@talktalk.net).

Letter From The Clergy

Dear Friends

I really dislike January: it's such a cold, grey, miserable month. February is little better – in fact, the only thing it's got going for it as a month is that it's usually three days shorter than January! But not this year – just to make matters worse, we have the extra 'leap day' and so February is even longer than usual (I realise this is all psychological: the extra day doesn't really make winter any longer, greyer, or more miserable – it just feels that way).

If, like me, you find the Leap Day just a little tiresome, spare a thought for our Jewish cousins. Every three or four years, Jews regularly have to include a whole Leap month in their calendar, meaning the year has thirteen months, not twelve. This stems from the fact that the Jewish months are defined by the lunar cycle: as a result, their year (twelve lunar months) has 354 days, not 365. Ordinarily, this would mean that the dates of their major festivals would tend to "slip" from year to year - but because the Jewish scriptures teach that Passover must always fall in the month of Nisan, in the spring, it is necessary to introduce a Leap Month to realign the calendar every two or three years.

Confused? I don't blame you! But it does illustrate one of the hazards of tying your calendar to the natural world.

(continued overleaf)



Cover

Regular worship at St John's – photo by Colin Nash.

The Magazine

Copy for the March 2016 edition should reach us by Sunday 14th February. If you can, please use e-mail: magazine@stjohninbedwardine.co.uk. The March edition of the magazine will be available on Sunday 28th February.

Opinions expressed in this magazine are personal opinions of the authors concerned and may not represent the views of the editors, our PCC or The Church of England. Such material is offered as a source of debate or reflection.

Unless otherwise directed, please send all written correspondence for the magazine to the Parish Office. *To subscribe or advertise in the magazine, please see page 29.*

(continued from the previous page)

The Christian calendar also has its roots in the natural world. Take Christmas. Nobody knows when Christ was born, but the ancient Church decided that they needed a date to celebrate Christ's birth and so it settled 25th December. No-one quite knows why, but one argument is that it was chosen because it fell around the time of the winter solstice – “the shortest day.” This was already the date of a major pagan festival, celebrating the moment when the light began to return as the days lengthened and so, in effect, the Church deliberately pinched the date by imposing its own festivities over the pagan celebration.

Or take Easter: the date of Easter is linked to the lunar cycle, which is why it shifts every year. And, like Christmas, it also coincides with another pagan festival, this time celebrating the new life of spring.

We shouldn't be embarrassed by Christmas and Easter's pagan connections. The early Church knew what it was doing: we talk of Christ as the light of the world, sent by God into a world of darkness and sin – so when better to celebrate his birth than at the winter solstice, when nature itself underlines the point as the days finally turn, and light begins to win over darkness? Or when better to celebrate the resurrection of Christ in the spring, when all nature is bursting forth into life?

The natural world reinforces the spiritual, by helping drive home the deep meaning of God's action in the world.

And isn't that what happens in our worship? We take things that are natural: water, bread, wine, and we use them to help us understand the deep mysteries of faith. Water is used for washing: in our baptism we are washed clean of sin; all of us need to eat and drink: in the Eucharist we find the bread and wine that meets our most basic spiritual needs. And, of course, we also use our own (no less natural) bodies to help us deepen the spiritual experience of our worship. Worship is, after all, a multisensory experience. Sight: the beauty of the vestments, the building, the action of breaking bread; touch: sharing the Peace; taste: the bread and wine itself; hearing: the beauty of the music; smell: the waft of incense, symbolising our prayers.

But so much of this passes us by in our worship. Recently, I wrote the guide to our new Morning Prayer service, and I was struck by how much depth there was to the liturgy. But how many people really understand why all the various bits of the service – for example, the Benedictus - are where they are, or indeed why they are included in the first place?

I guess the same is true of the Eucharist. A little example: how many people realise that the Gloria (“Glory to God in the highest...”) is a response to the words of forgiveness spoken after we have confessed our sins? We say sorry to God in our act

of Penitence, the priest speaks words of forgiveness over us, and we stand to sing our heartfelt thanks to God in the words of the Gloria.

Worship is an incredibly rich experience, if we understand what we're doing and why we're doing it. You could argue it's like good wine: in fairness, even without the necessary knowledge, all of us can drink it and get something from it; but if we are prepared to take the time to deepen our understanding (refine our palette, so to speak) then there are far greater riches there to enjoy. If worship sometimes feels boring, perhaps it's because we don't know enough about what we do and why we do it. Maybe a challenge for Lent?

Christopher

A Word From The Editors

Welcome to the February edition of our magazine. This month we are looking at the second of the Kingdom People characteristics “**Renewed and transformed by regular worship**” (page 12). Worship is an incredibly varied experience which can take many forms from the small and simple (“where two or three gather together in my name”) to the complex, and it can affect us each individually in our own way. As Chris points out above, better understanding of our worship in church will allow us to appreciate and benefit from the richness of our services.

Worship and services inevitably weave their way through a Parish Magazine such as this, and, additionally, in response to the theme we've included a piece about the Benedictus (page 22).

The Benedictus is included in the service of Morning Prayer (Matins) but is (we suspect) rather unfamiliar to many, as this service has not been ‘on the menu’ all that much of late. It is now coming back as each church in the Group moves forward with one service of Morning Prayer each month. As an illustration of how these things go in circles, look at our extract from the archives on page 22 and count how many Matins services there were each week in 1883!

We pray that you will be blessed and enriched by your worship this month and every month, through Lent and beyond.

Graham and Sue Evans

O worship the Lord in the beauty of holiness. Let the whole earth stand in awe of him
Psalm 96:9

God is spirit, and they that worship him must worship him in spirit and in truth.
John 4:24

God is our hope and strength, a very present help in trouble.
Psalm 46:1

Dates for February 2016

Unless otherwise stated, the venue for all the events below is
St John's Church, or one of the church rooms.

See page

Sunday 7th February: Sunday next before Lent

See the back cover for Sunday services on this day

Wednesday 10th February

7.30 p.m. Ash Wednesday Service (Eucharist and ashing)

Sunday 14th February: First Sunday of Lent

See the back cover for Sunday services on this day

Sunday 21st February: Second Sunday of Lent

See the back cover for Sunday services on this day

Friday 19th February:

7.00 p.m. Group Skittles Event, Portobello Inn, Bransford Road

Saturday 20th February:

Children's Activities

Sunday 21st February: Second Sunday of Lent

See the back cover for Sunday services on this day

Wednesday 24th February

7.00 p.m. Craft Group 10

Saturday 27th February 2016:

12.30 p.m. Open Day at St David's Church, 12.30 – 4.30pm 19

Sunday 28th February 2016: Third Sunday of Lent

See the back cover for Sunday services on this day

Monday 29th February 2016

Don't forget it's a leap year!

Thursday Morning Services: There is a 9.45am Holy Communion (Book of Common Prayer) each Thursday at St Clement's and a 10.45am service at St Michael's (Eucharist, modern language).



St Michael's Church

LENT LUNCHESES

Every Wednesday from Ash Wednesday (10th February) to Easter, 12 noon to 1.30pm. £3.50 for soup, bread, cheese, tea or coffee.

In Memoriam

Olive Mary Peggy Outram	2 February 1992
William John Davies	3 February 1999
Frederick Grice	8 February 1983
Doris Winifred Osborne	10 February 1975
Frederick James Cole	10 February 1975
Stanley Edward Price	11 February 1982
John Lunn Newman	14 February 1976
Rosanna Walker	14 February 1990
Stanley Reginald Jones	15 February 1963
Mary Ann Harrison	15 February 1978
Eileen Bennett	17 February 2009
Maurice Charles Pearson	24 February 1999
Reginald Edward Osborne	25 February 1984
Emily Jane Haynes	26 February 1976
Florence Harrison	26 February 1977
Reginald Frederick Jones	27 February 1974
May Smith Bloodworth	28 February 1976
William Joseph Probyn	28 February 1987
Doris Betty Dear	28 February 1989
Doreen Iavarone	28 February 1998

Additions to In Memoriam are not automatic but must be specifically requested via the clergy.

From January 2017, in memoriam items are included until the fortieth anniversary.

An extension may be requested by family or friends of those named.

From The Registers

Baptisms, weddings and funerals which took place in December 2015

BAPTISMS: *We welcome you into the Lord's family*

There were no baptisms in December.

WEDDINGS: *Those whom God has joined together*

There were no weddings in December.

FUNERALS: *Rest eternal grant unto them O Lord*

d.11 th November	Venetia Bettison	d. 30 th November	Robert Sheridan
d. 18 th November	Dennis Verman	d. 7 th December	Joan Morgan
d. 22 nd November	Avril Tartuglia		

From the register of services for December 2015 (4 Sundays):

Communicants 338. Total attendance at all services 1928. The total attendance includes 35 at funerals/memorial services.

Church Directory

CLERGY

Vicar of St John's and St Clement's with St David's	Rev'd Dr Christopher Stuart chris.stuart@westworcesterchurches.org.uk	01905 429773
Vicar of St Michael's, Dines Green	Rev'd Phil Bradford phil.bradford@westworcesterchurches.org.uk	01905 423794
Assistant Curate	Rev'd Sarah Cottrill sarah.cottrill@westworcesterchurches.org.uk	01905 426257
Rural Dean	Rev'd David Sherwin davidwin56@aol.com	01886 888664

ST JOHN'S PCC OFFICERS

Churchwardens	churchwardens@stjohninbedwardine.co.uk	
Gordon Templeton	gordtemp@btinternet.com	749025
Joy Job	joyjob@dsl.pipex.com	423051
PCC Lay vice-chair	Sue Bale	423257
PCC Secretary	Graham Evans pcc@stjohninbedwardine.co.uk	428667
Joint Treasurers	treasurer@stjohninbedwardine.co.uk	
Chris Rees		
John English		427822

THE MAGAZINE

We publish a Parish Magazine each month, except August. The magazine costs 40p to purchase and can be obtained from the back of church. Subscriptions are available at the discounted price of £4 per year. Contact the Parish Office or see the magazine for how to subscribe.

Articles on all aspects of Christian and parish life, letters, jokes and anecdotes are welcome - do contribute if you can. If you have a story to tell, please make contact. Please include your name as anonymous contributions will not be considered.

Editors	Sue & Graham Evans magazine@stjohninbedwardine.co.uk	428667
Advertising	Sue Hussell sue.hussell@talktalk.net	01684 893397
Subscriptions database	Joan Tyler-Gunston	
Magazine Treasurer	Ian Thompson	
Distribution co-ordinator	Mary Hancock	

Any written correspondence for the magazine which cannot be emailed, please send to the Parish Office.

Church Directory

ST JOHN'S CHURCH OFFICERS

Child Protection Officer	Jane Askew	424811
Verger	Catherine Templeton	749025
Stewardship envelopes	Irene Allen	422684
Estates Manager	Brian Askew brian.askew@stjohninbedwardine.co.uk	424811
Parish Administrator	Liz Edwards liz.edwards@stjohninbedwardine.co.uk	420490
Archives Officer	Philip Evans	428667
Pastoral Care Coordinator	Sylvia Render sylviarender@talktalk.net	422654
Press Officer	Philip Evans pressofficer@stjohninbedwardine.co.uk	428667
Organist & Choirmaster	John Brierley	358474
Music Group	Peter Yates pjyates194@btinternet.com	422565
Ringling Master	John Bower jandjbower@btinternet.com	07792 574554
Church Flowers	Eileen Cantrill Di White	422579
Webmaster	Philip Evans webmaster@westworcesterchurches.org.uk	

OUR CHURCH

St John-in-Bedwardine Church is an active Anglican church which has its roots in the Norman period. The church is open daily, as a haven of peace at a busy road junction in the St. Johns area of Worcester.

The church was originally built in 1165 as 'The Chapel of St John' – the parish church then being St. Cuthbert's in Lower Wick. When the church of St Cuthbert's was demolished in 1370, St John's became the parish church.



OUR PRIORITIES FOR 2016

Outreach and serving the community This includes understanding the community, social concern, value to the community, creating a buildings vision (to make our buildings fit for purpose to serve our objectives) and embodiment of West Side Collaboration as collaborating on projects.

and

Children and Families, Schools and Christian Nurture



Fellowship and Fund Raising
Events
at St John in Bedwardine Church
(unless stated otherwise)



Friday 19th February	Group skittles evening: 7pm, Portobello Inn
Saturday 20th February	Children's Activities. Tel 424811 for details.
Wednesday 24th February	Craft Group

FUTURE DATES TO KEEP FREE

Saturday 12th March	Mission Breakfast
Saturday 12th March	Children's Activities
Wednesday 16 th March	Craft Group
Saturday 9th April	Bridge Day (NB no Bridge Day in March)
Saturday 7th May	All day Group Outing to Coventry
Saturday 11th June	Tea on the Green for the Queen! 2-4pm
Saturday 9th July	St John's Village Fete 11am-3pm

A Very Special Birthday Party

To celebrate the birthday of Her Majesty The Queen we will be holding a family street party on Saturday 11th June.

We are looking for volunteers to help both on the day and before hand.

Could you help with distributing posters around St Johns?

Would you like to help with setting up on the day?

We will be having a craft afternoon to make bunting and decorations, come and join us for cake!

If you would like to be involved see Catherine Templeton, Sandra Nash or Ellen Little in church on Sunday.

Deepening Your Faith

Last autumn we ran the first six-week module of The Church of England's new *Pilgrim Course*. The course is designed to help both existing Christians and seekers explore and deepen their faith. The modules are designed to look at different aspects of faith: Church teaching, spirituality, ethics, and lifestyle. The course proved hugely popular – so much so that we've decided to run it again in Lent.

Last autumn's module offered a basic overview of faith and focussed particularly on Church teaching. In Lent, we'll be using the module on The Lord's Prayer, and the focus will be on deepening our prayer and spiritual life. Below are some reflections from people who attended the Autumn course.

The beauty of this course is that you can drop in or out at any time. More importantly, **you don't need to have attended last autumn's course in order to come along to the sessions in Lent**. So why not join us, from 7.30pm-9pm on the following Tuesday evenings in Lent (L = St John's Library, C = St John's Church):

9th Feb (L)

23rd Feb (C)

8th March (C)

16th Feb (L)

1st March (C)

15th March (C)

Chris Stuart

(Joy Job) I found the Pilgrim Course to be very interesting and helpful in understanding the selected biblical texts. It was rather daunting to begin with but the 6 weeks passed very quickly! It was also reassuring to know that it was not imperative to attend every session as it was possible to catch up with the help of the course booklet and Clergy of course! Everyone was friendly and it was lovely to get to know the other members better by discussing topics which could be quite painful at times. It has helped to strengthen my faith and I'm looking forward to attending the next course.

My thanks to Chris, Phil, Sarah and Peter for their teaching, for bringing the texts alive and relevant to modern day living. I would definitely recommend the course.

(Rob Little) I was confirmed when I was 16 and had been to a variety of churches (and often none) since then. As I became a regular at St Johns, I realised that there were things that I learned in my confirmation classes that I had forgotten or not fully understood and I wanted a refresher on some of the "basics" of what being a Christian meant. I think the thing I appreciated most about the Pilgrim course was the chance to chat and explore my faith with others who felt just the same – we were guided by Chris, Sarah, Phil and Peter but we could talk openly amongst ourselves and that created a really positive environment to learn. It turned out to be so much more than the refresher I thought I wanted and I'm looking forward to the next part of the course soon!

Kingdom People Characteristics (2)

The second of the eight Kingdom People Characteristics is:

“Renewed and transformed by regular worship”.

Prayer needs to be not only individual but corporate. From the very beginning Christians met together on the first day of the week for the breaking of the bread and to pray.

Churches should be schools of virtue in which we seek God’s grace and encourage one another in faith, hope and love. Our relationship with the true vine must be nurtured by regular praise and receiving of holy communion.

Expectation

Our attitude to worship determines to some extent what we get out of it. If we come to worship hoping and expecting to be drawn deeper into fellowship with God, then a rich and life" giving encounter will often take place.

Expresses the whole of life

The church should be alert to the live issues of the local community, the nation and the world. Those conducting services or leading the prayers of intercession need to be alert to some of the things that will be weighing on the hearts and minds of those who will be attending worship.

Worship should reflect the great themes of justice, holiness of life, generosity and compassion.

Reflection and stillness

Time and space should be given during the service for silence and reflection. Some churches announce a time of quiet preparation before the service begins (as a kind of ‘decompression zone’ that allows people to prepare for entering worship).

Positive

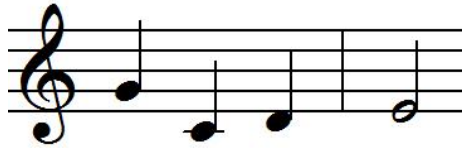
At the Transfiguration, Peter says to Jesus that it is good for them to be there (Mark 9:5). There is a lot to be said for his simple recognition that it is good to be present where Christ is being glorified.

Worcester Diocese website:

www.cofe-worcester.org.uk/mission-and-ministry/kingdom-people/

Matthew 18:20

For where two or three gather together as my followers, I am there among them.



Notes From The Choir



Collective worship is a fundamental part of all the major religions and the gathering together of people to worship God finds resonance all across the world. In the Christian tradition there are many forms of Service but many have music at their heart and in particular the singing of hymns. The word hymn comes from a Greek word meaning a song of praise and there are examples of such songs or hymns from both ancient Egyptian and Greek cultures so establishing a tradition long before our own Anglican one of incorporating hymns as a central part of our acts of worship. In the book 'Sing with Understanding: An Introduction to Christian hymnology', Hugh McElrath says that a hymn 'should be simple and metrical in form, genuinely emotional, poetic and literary in style, spiritual in quality and with ideas so direct and so immediately apparent as to unify a congregation while singing'.

So the best hymns are a great way of expressing fundamental truths in a way that everyone can grasp set to music that everyone can sing. The topic of favourite hymns came up at choir recently and so I asked for volunteers to let me know what their favourites were and why they were special. I had enough responses to fill these notes and beyond so will return to this topic again. For this month though the ladies come first! From our alto section, Marion chose Blest are the pure in heart. She told me that it was sung at her mother's funeral and that it was precious as it summed up her mother who truly was gentle, loving and pure. From our soprano section Mary chose Just as I am, without one plea. She explained that this expresses how she would like to be accepted as the person that she is and that the tune fits the words so well, moving up and down the notes as the emotions unfold. She said that she would like it to be sung at her funeral and I see exactly what she means with the wonderful repeated line of each verse: O Lamb of God I come.

It is interesting how for both Marion and Mary there should be an association with these hymns to that great passing from this life to the next which is such a personal journey and yet is marked by the funeral service where a person's life is shared and remembered. The resonance and power of these great hymns is with us both as individuals and also as members of the bigger family of God.

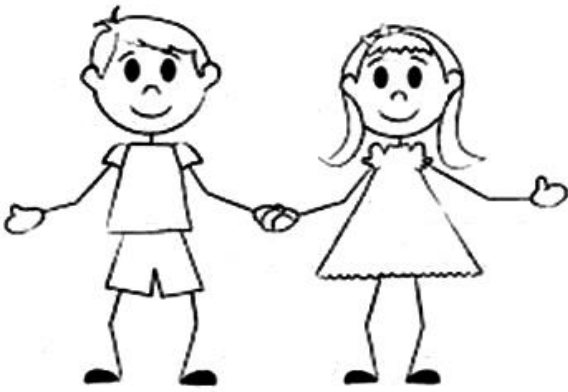
Luise Horrocks

Bibles, Bumps and Babies

An informal bible study group.

Wednesdays 9.30am.

Contact Sarah on 426257 for more details.



Children's Church News

We started the New Year on Saturday 9th January by saying 'Thank you'. Over 20 children attended so we were very busy. We looked at why we need to say thank you, how we can say thank you to God and even learnt to say 'thank you' in

different languages. We thought about what we should say thank you for.

Pizza tea was provided by Margaret and Sue. A most enjoyable afternoon!

The new style Family Service was held on the 10th January and was enjoyed by all who attended. The talk was on our blessings and how we can share the simplest of blessings with everyone; an important thing for us all to think about.

Junior Church is held on all the other Sundays. This month we will be looking at praying, and looking in detail at The Lord's Prayer.

If you would like to be involved in any of our activities do not hesitate to get in touch, Tel 424811, visit our Facebook page or just turn up. The next activity session is Saturday 20th February and the Family Service Sunday 14th.

Children's Church

You are all invited to design a tea towel!

We would like to have your ideas, suggestions and/or designs for a tea towel!

The design could also be suitable for printing onto a jute bag.

The design should incorporate the life of our Church and community. The maximum size of artwork is 72cm X 42cm, using either 1 or 2 colours.



Please could you hand into Church your ideas, suggestions and designs by Sunday 14 February.

*Many thanks!
Events Team*

Welcome To A New Advertiser

Please mention the magazine when responding to advertisers



JUNIPER HOUSE RESIDENTIAL CARE HOME

'Keeping kindness at the heart of our care'



Our beautiful new care home includes all of the luxuries you'd expect along with some special touches that make it a true home.

Our residents spend their time how they wish whether that's enjoying a home-cooked meal, having their hair done in the salon, taking part in an activity or relaxing with a good book.

Carefully chosen for their kind and compassionate approach, our staff provide a range of residential, dementia and respite care.

Please feel free to contact us at any time.

**JUNIPER HOUSE
RESIDENTIAL CARE HOME**
2 Oak View Way, Worcester,
Worcestershire WR2 5FJ
Tel: 01905 676 950

www.sanctuary-care.co.uk

Sanctuary Care Limited is a subsidiary of Sanctuary Housing Association, an exempt charity

Curate's Progress Report

It seems incredible to me, but I have now been your Assistant Curate for eighteen months and in another eighteen months/two years could be let loose on some unsuspecting parish of my own! The time has flown by and I have thoroughly enjoyed myself – and learned a great deal along the way! I am acutely aware of how much I still have to learn, but Chris has decided that I am at that stage of my training when I can take on the running of a church, whilst still having somebody wiser and more experienced to keep an eye on me. For the remaining time of my curacy, therefore, I am going to be “in charge” of St. David’s Church. This is an exciting prospect for me and I am very much looking forward to working with the people of St David’s to meet the challenges they are facing and to help them to take their church out to the wider community and into the future. The “down-side” of this, (for me, anyway), is that as I assume a higher profile at St David’s, I will inevitably spend less time at St John’s and St Clement’s. I have greatly appreciated all the support, encouragement and friendship I have received from you and hope I can count on your continued prayerful support as I will also hold you all in my own prayers.

Another exciting prospect in the coming months is that I have to arrange a placement in “a form of ministry in which I am interested but without experience!” At the moment I am in the process of negotiating this and can’t really say too much about it. Again, though, please hold that in your prayers and once I know where I am going, I will let you know.

Sarah Cottrill



Calais Refugee Camp

Chris Russell in Worcester is looking to set up a co-ordinated response to the refugees in Calais and Dunkirk and is hoping that deaneries will support him.

Here are his thoughts on his first visit to the camp just after Christmas.

"Overwhelmed and overwhelming sort of sums up today."

"The Dunkirk camp is a mess of tents, mud, shelters and rubbish with isolated areas where there is some sense of organisation in the chaos. Just getting

aid and supplies into the camp and organising distribution takes so much time and effort that the individual support that is needed is delivered randomly at best, if at all.

There is a small group of volunteers from Aid Box Convoy who with MSF hold the place together. They negotiate with the police to get aid into the camp. Volunteers run the canteen/kitchen, a men's clothing distribution store and a store that has tents, sleeping bags etc. and also distributes food boxes. There is also a women and children's tent and a 'school room'. These are so small that there is no way they can cope with everyone in the camp. A lot of donations end up being handed out from the back of vans and by individuals walking aid in.

The mud is everywhere and it hasn't rained for a few days. There is nowhere clean to sit or keep anything. Nowhere to wash or dry clothes. Anything that gets too dirty is just discarded because there is no other option.

We took our donation to the women's tent and one of our team spent a couple of hours helping sort and organise things inside. I was occupying a bunch of kids outside who had created havoc inside when a load of Christmas boxes had been delivered. I also helped get tents up and we unloaded vans and moved items to the stores.

It feels like everything is just a drop in the ocean, but as I found today that for a group of guys, helping them get a tent sorted out and an aid box and bedding meant all the difference to them. Those I helped made up less than a quarter of 1% of the camp.

It was humbling to be thanked for offering so little, with some it was a handful of tea lights, at the most it was basic food supplies."

Chris is planning another trip to take more aid to the Calais refugee camp shortly. He is keen for other deaneries to be involved in the work. Please do read his proposal: http://cofeworcester.contentfiles.net/media/assets/file/Refugees_Deanery_Proposal_Final.pdf and contact Chris via email (russellx5@btinternet.com) or on 01905 724334 if you'd like to help.

Sam Setchell

The Queen - a message from the Church Buildings Council

With the approval and agreement of the Archbishops of Canterbury and York, the Church Buildings Council is encouraging every parish church in England to organise a festival on the weekend of 10-12 June 2016 to celebrate the Queen's 90th birthday and her role as head of the Church of England.

In addition, to coincide with the Queen's birthday we hope that every church will be able to organise an exhibition of the life of its parish over the previous 90 years. Such exhibitions should, by charting the changes in the lives of our communities since 1926, highlight the ways in which parish churches have been and remain the focus of those communities, and be a celebration both of our churches and of the people that they serve. We hope that most parishes will be able to find photographs, artworks and oral history connected with their church and the local area.

‘Personalised loneliness service helps connect older people with local activities’

With an estimated 35,000 lonely people in Worcestershire, plus strong links between loneliness and developing health issues, the scale of loneliness in the county is huge. There are a wide range of excellent activities and services that can help, but how do you reach people who may not hear of them, lack confidence to get in touch or simply don't know which one is right for them?

To overcome these kinds of barriers, and to help increase the impact of existing services in the county, Reconnections is a new personalised service to connect people to activities and groups that match their interests, and so reduce loneliness at its root. Available to those over 50, Reconnections works with each individual to understand their specific needs and interests, before helping them work towards a goal – such as joining a local club or activity – in manageable stages. The service works alongside existing service providers, and is already seeing a valuable impact.

“When initially referred to the service, William was lonely and socially isolated. Suffering from low confidence he struggled to leave the house and had few friends. With the help of Reconnections he began to receive regular visits from a volunteer, with whose encouragement he joined a local gardening club. William's confidence and wellbeing has since grown dramatically, and, inspired and energised by his experiences to date he has now also joined a lunch club.”



Reconnections can help more people like William to connect with befriending organisations, gardening clubs, lunch clubs, social groups and many more. The service is also helping existing clubs, organisations and groups to find individuals who will enjoy the activities on offer.

Do you know someone like William? Referring people who might benefit is easy – simply email, call or complete a short form online. To find out more about the service, visit www.reconnectionsservice.org.uk, email the team at reconnections@ageukhw.org.uk or ageuk.hw@nhs.net or call 01905 740954

Reconnections is delivered across Worcestershire by Age UK Herefordshire & Worcestershire in partnership with Simply Limitless, Age UK Malvern, Worcester Community Trust and Onside Advocacy.



Sophie Pryce

Reconnections Project Manager



Mission Breakfast

On Saturday 12th March 2016 we are holding a Parish Breakfast at St John's Church. It is from 8.30 a.m. to 10.30 a.m. with a full English cooked breakfast, toast, home-made marmalade, tea and coffee.



All free with excellent fellowship. Everyone is welcome, so invite your friends, families and neighbours to come and share with us.

Jenny English

Recycling for St John's Church

Thank you very much to all our Recyclers! I am about to send off another collection so I will let you know how much has been raised!

If Spring cleaning and sorting out please remember that any old or unwanted gadgets such as laptops, games consoles, sat navs, cameras and mobile phones can be recycled. Also unwanted or damaged items of jewellery, gold, silver or costume jewellery and watches can be recycled. Old UK or foreign currency of any age, stamp albums, first day covers, presentation packs and postcard collections can all be put in the box. We can now include used UK and foreign postage stamps!

Everything that you donate can be turned into cash for our Church! Please ask your friends, family and work colleagues to participate. If you have any queries, then please contact me on W. 423051. Thank you!

Joy Job

St David's Church Open Day

St David's Church (Comer Gardens) has an Open Day on Saturday 27th February from 12.30 to 4.30pm. This will feature photographs and history of the Church. There will be soup at lunchtime and at 4 o'clock we shall enjoy Bara Brith and Welsh Cakes.

Bishop Graham's reflections on Peru

The Bishop of Dudley has just returned from spending a week in our partner diocese of Peru.

The link between the Diocese of Worcester and the Diocese of Peru is one that is strong. For nearly 25 years there has been much sharing of ideas and resources, as well as a joint journey of prayer and service to God's Church. Very often this has been focused on the poorest, with Worcester supporting projects working with vulnerable and disabled children, women in prison learning sewing skills, and the missionary expansion of the diocese in creating new places of worship where other denominations fear to go.

The link has also enabled people in both dioceses to understand something of the breadth and diversity of the Anglican Communion. For me, the Anglican Communion helps to enrich my faith by seeing a bigger picture of God and seeing God at work in cultures very different from my own. We mustn't forget that the world's average Anglican is aged under 30, is living in acute poverty, serving the poor, often in places of conflict or natural disaster, yet living with great joy and hope.

At a time when there is much in the news that speaks of division within our world-wide communion, our link with Peru should be rightly celebrated.

The Diocese of Peru is going through a time of great change. In 2015 the first three Peruvian suffragan bishops were consecrated and the current diocesan bishop, Bishop Bill Godfrey, returns to the UK in the next few months after 18 years in Lima. Bishops Jorge, Alejandro and Juan Carlos are learning their new roles as pastors and shepherds of their flock. They exude great warmth and are natural evangelists. They recognise that they have much to learn and they are often working in isolated situations.



The latest visit from Worcester to Peru was a small team. My companions have been Phil Bradford, who knows the country well and speaks Spanish, and Margaret Rutter. The purpose of the visit has been to support the new Peruvian bishops in their roles and build relationships with them.

Last year I was privileged to attend the course for new bishops from across the Anglican Communion which is held each year at Canterbury Cathedral. I learnt much from this experience of dialogue and sharing with 37 other bishops from 24 countries. So, in a small way, I have been able to pass on this learning to my Peruvian brother bishops during an intensive short course during our visit. This has covered the role of the bishop, sharing our God given gifts, collaborative ministry, communication, the place of the Anglican Communion, and companion links.



It has been a very special time of sharing and learning. The Peruvian bishops generously said, “We thank God for this time together. We have been encouraged, learnt much and we don’t feel so alone. We feel we can now be better bishops. It’s good to be part of this family.”

As always when engaging with others there is a shared learning and I feel privileged to have heard a variety of

stories from my brother bishops in Peru about what it is to be a missionary bishop. They go to new places, make disciples, baptise and teach. In all of this they are daily living out Jesus’ Great Commission that we read about in Matthew’s Gospel.

It is sometimes said that the Anglican Communion is composed of bonds of affection. In the context of our work in Peru the word ‘affection’ seems a bit limp. Between Worcester and Peru there are deep bonds, I would suggest, of love, care and charity.

This is why I’m praying for the Primates gathering in Canterbury this week - that their vision of our Communion may also be one that, like mine, is continually enriched and refreshed as we each see the face of Christ in the other and in the stranger in our midst.

*Gracias a Dios
+Graham*

Philippians 4:6-7

Do not worry about anything, but in everything by prayer and supplication with thanksgiving let your requests be made known to God. And the peace of God, which surpasses all understanding, will guard your hearts and your minds in Christ Jesus.

From The Magazine Archive, November 1883

Hours of Divine Service.

DAILY—10 a.m., Matins (11 a.m. Wednesday and Friday).
7.15 p.m., Evensong.

SAINTS' DAYS—8 a.m., Holy Communion.
11 a.m., Matins.
7.15 p.m., Evensong with Address.

SUNDAYS—8 a.m., Holy Communion.
11 a.m., Matins, Sermon (Holy Communion 1st and 3rd Sundays).
3 p.m., Service for the Young.
6.30 p.m., Evensong and Sermon.

The Benedictus

The Benedictus is a song of praise and thanksgiving sung by Zechariah, a Jewish priest, on the occasion of the circumcision and naming of his son, John. It is found in Luke 1:68–79, and is named from its first words in Latin (Benedictus Dominus Deus Israel, "Blessed be the Lord God of Israel").

It is addressed in part to the Israelite people about their long-cherished hopes of a Messiah, and in part to his baby son John, who will emerge as John the Baptist, the prophet and forerunner of the Messiah whose kingdom of peace is about to begin.

The first part (verses 68-75) is a song of thanksgiving for the realisation of the Jewish nation's hopes of a Messiah, but given a Christian tone. As of old, there was power to defend the nation against its enemies; now that power is to be restored to them, but in a higher and spiritual sense. The deliverance was now at hand; not as worldly power, but that "we may serve him without fear, in holiness and justice all our days".

The second part of the Benedictus is an address by Zechariah to his own son, who was to take so important a part in the scheme of the Redemption; for he was to be a prophet, and to preach the remission of sins before the coming or the Dawn from on high.

The Benedictus was used as a hymn beginning in the 4th century in both Eastern and Western liturgies. It is called a canticle; this word (from the Latin canticulum, "song") is used for songs of praise taken from biblical or holy texts other than the Psalms.

Graham Evans (adapted from Wikipedia and other internet sources)

Sainsbury's Every Day Shopping Card – Update

Unfortunately, Sainsbury's have decided to exit the Raise with Sainsbury's scheme as their focus for charity activity is on further developing their own local community programmes.



The Sainsbury's Everyday Shopping Card scheme will close on 27/02/2016.

Sainsbury's Everyday Shopping Cards can be topped up until 27/02/2016. After this point, anyone who has a card will have two years to redeem cash already loaded onto the card by spending it in-store.

Introducing Cards for Causes

Watch out for information on the new Cards for Causes scheme which gives charity supporters the opportunity to buy gift cards and shop in store at a range of retailers including Starbucks, Marks & Spencer and Tesco, raising up to 6% in charitable donations from Give as you Live.

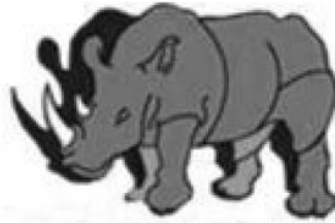
Give as you live (EveryClick Ltd)

Sudoku Puzzle

		5			7	3		
	1					2		
7				1	5			6
	5	9			6			
			3			4	2	
6			5	4				7
		1					8	
		8	2			6		

© 2008 CrazyDad.com

The solution is on page 32.



RHINO ROOFING LTD

- FLAT ROOFING REPAIRS
- RE-ROOFS
- FLAT ROOFS
- CHIMNEY WORK
- FASCIAS
- SOFFITS
- GUTTERING
- LEADWORK
- RE-POINT RIDGES AND VERGES



Genuine OAP Discount

If you are looking for trained professionals to fix your roof, look no further. Rhino Roofing Ltd is a very professional and established company. You can put your trust in us to give you the best as we have over 20 years experience and still counting! Contact us for a

FREE QUOTATION – CALL US ON 01905831364



<https://www.facebook.com/rhinoroofingltd>



https://instagram.com/rhino_roofing_ltd/



<http://www.rhinoroofing.co.uk/>



rhinoroofingltd@hotmail.com



Please mention the magazine when responding to advertisers



BLACKPOLE

TRADE & SAVE AUTOCENTRE

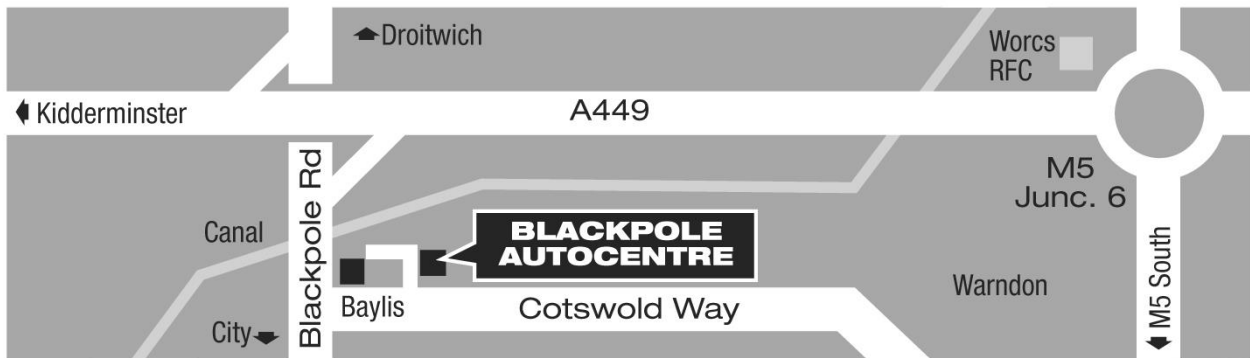
INTRODUCTORY OFFER

Offer valid until
30th September
2016 with this
advert only.
50% discount cannot
be used in conjunction
with any other offer.

**UP
TO**
50%
OFF

- **MOTs**
- **SERVICING**
- **REPAIRS**
- **BRAKES**
- **TYRES**

the Good Garage Scheme



Plus a wide range of used cars from only
£1995 - check our latest stock online!

**Cotswold Way, Blackpole
Worcester WR4 9XN**

01905 670835



www.blackpoletradeandsave.co.uk

Dr Janet Hails



Garden Solutions




Beds & Borders 🌿 Shrubs & Herbaceous 🌿 Pruning & Training ✂️
 Fruit & Veg 🍓 Unusual Plants 🌱 Consultation & Coaching 📖
 Pots & Baskets 🪴 New Planting 🌸 Right Plant Right Place 📍
 One Off Projects 🕒 Regular Maintenance Visits 📅

*RHS Level 3 Diploma with Commendation
 Over 30 Years Gardening Experience*

☎ **01905 748963** 📞 07933 263399 🖥 dr.hails@btinternet.com

Room Hiring At The Church

The church has two meeting rooms and a large space in the church available for hire. All rooms have access to the church car park.

Blakefield Room	Suitable for up to 30 people: Fully fitted kitchen, including dishwasher; toilets, including one disabled toilet and a baby-changing facility; Tables and/or chairs.	
Burroughs' Room	Suitable for up to 12 people. Drink making facilities and toilet.	
The North Aisle	Seats 120 theatre style or seats up to 64 around tables. Tables and chairs are provided in a large open area with plenty of electric sockets. It is used to host exhibitions, meals and conferences.	

All access to the church is level and therefore suitable for wheelchairs. A toilet for the disabled is available.

For more information, please email hire@stjohninbedwardine.co.uk

SJM LOCKSMITH SERVICES

LOCAL • RELIABLE • INDEPENDENT

No Call Out Charge • Advice Given • Free Onsite Estimates

Are Your Locks Behaving Badly ?

Repairs • Replacements • Upgrades

We Carry Out All Aspects Of Door And Window Security
Emergency Call outs Due To Lost Or Broken Keys
Additional Door & Window Security & Insurance Approved Upgrades
Double Glazing Multi Point Lock Repair Specialist
Free No Obligation Home Security Survey
Clean & Tidy Workmanship

01905 73 15 36

07871 44 20 11

www.sjmlocksmith.co.uk

Podiatrist/Chiropodist

State Registered

HPC No. 14966

FOOT-NOTES UK

Racheal Sharman

BSc (Hons), MChS, SRChS

174a London Road

WORCESTER

WR5 2EJ

Diabetes Appointments

01905 360079

General Foot Care

Mob: 07974 650775

info@footnotesuk.co.uk



Worcester Funeral Service

01905 23499

Independent Family Funeral Directors



Craig is available 24 hours a day.
Please call for any assistance.

Golden Charter 
Funeral Plans

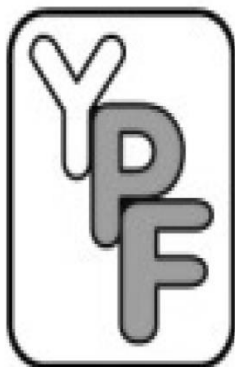


31c Barbourne Road, Worcester, WR1 1SA

WorcesterFuneralService.co.uk

Your Picture Framer

Call in and see our retail space and studio where we continue to provide our great customer service and fine bespoke framing.



- We can frame almost anything
- No obligation advice
- Home/Office visits available
- Computerised pricing – no guessing
- Out of hours appointments offered
- Latest techniques
- Top quality materials



www.yourpictureframer.co.uk

info@yourpictureframer.co.uk

01905 423300 or 07730 539168

2A Great House Road

Worcester

WR2 4HS

Worcester Chiropractic Clinic

102 Bromyard Road, St Johns, WR2 5DJ

Expert treatment for a range of conditions:

- Sciatica
- Headaches
- Sports Injury
- Trapped Nerves
- Back Pain
- Carpal Tunnel
- Tendonitis
- Osteoarthritis
- Neck Pain
- And more...

01905 428 956



REGENT RESIDENTIAL CARE HOME

'Keeping kindness at the heart of our care'



Regent includes all of the comforts you'd expect along with some special touches that make it a true home.

Our residents spend their time how they wish whether that's enjoying a home-cooked meal, having their hair done in the salon, taking part in an activity or relaxing with a good book.

Carefully chosen for their compassionate and kind approach, our staff provide a range of personal residential, dementia and respite care.

Please feel free to contact us at any time.

REGENT RESIDENTIAL
CARE HOME
School Road, St. Johns, Worcester
WR2 4HF Tel: 01905 337100

www.sanctuary-care.co.uk

Sanctuary Care Limited is a subsidiary of Sanctuary Housing Association, an exempt charity

To advertise in the magazine



The Parish Magazine is published A5 in size, in black and white. There are eleven issues during the year, July and August being a combined issue.

An advert can be full page / half page / quarter page in size and the booking can be from one month to one year.

If you wish to advertise, please contact Sue Hussell on 01684 893397 or by email at sue.hussell@talktalk.net

Julie Davies
Qualified professional mobile hair stylist.

ADVICE
PERMING
CUTTING
COLOURING



NVQ II & III
HAIRDRESSING
NVQ TEACHING
ASSESSMENT
NVQ
CUSTOMER
CARE

Tel: 01905 427704
Mobile: 07977 590087

West Wind Counselling



Sarah Jeffery MBACP Holt Heath, Worcs WR6

**For help and support
with emotional pain or distress
including:**

- depression, stress, anger or anxiety
- bereavement, loss, setbacks, grief
- low confidence or self-esteem
- relationship difficulties or other troubles

T: 07432 078087
E: westwindcounselling@gmail.com
W: www.west-wind-counselling.co.uk

Please call or email me for
a first confidential discussion.

I look forward to hearing from you.

*"It was such a relief to find someone to talk to,
who understands and can help me to find my way.
I would recommend counselling with Sarah to
anyone who is struggling to cope." (Client RP)*



To subscribe to the magazine

The magazine costs 40p to purchase and can be obtained from the back of church. Subscriptions are available at the discounted price of £4 per year. We encourage you to subscribe as this means that we know more closely in advance how many copies to print and this makes things easier for our printing team.

Please contact the parish office and leave details of your name and address if you would like to subscribe.

Brian Askew Lic. Ac., M.B.Ac.C.
Traditional Five Element Acupuncture

Member of the British Acupuncture Council

Established 1994

18 Stanmore Road
Hanbury Park
Worcester WR2 4PW

Tel: 01905 424811
Home visits available

火
土
金
水
木

SUDOKU SOLUTION

4	8	5	6	2	7	3	9	1
9	1	6	8	3	4	2	7	5
7	2	3	9	1	5	8	4	6
2	5	9	4	8	6	7	1	3
8	3	4	1	7	2	5	6	9
1	6	7	3	5	9	4	2	8
6	9	2	5	4	8	1	3	7
5	4	1	7	6	3	9	8	2
3	7	8	2	9	1	6	5	4



HOME. There's no place like it.

Being able to live at home can be one of the most important comforts in an older person's life and because family and friends can't always be there, Home Instead Senior Care are here to help in your area.

Our Award winning Services Include:

- Companionship
- Light housekeeping
- Local transportations and errands
- Meal preparation
- Convalescence support
- Shopping
- Personal care
- Specialist dementia and Alzheimer's care *and much more...*

For us nothing is more important than providing a convenient and reliable care solution that works for everyone, from an hour to full time cover.

For an informal, no obligation chat to discuss your needs, OR if you feel you have the right qualities to become one of our CAREGivers please call: *Samantha Smith on 01905 420404.*



Please mention the magazine when responding to advertisers

Abbeyfield

WORCESTER



12 GREENHILL
LONDON ROAD
WORCESTER
WR5 2AA

INDEPENDENT LIVING FOR THE
ELDERLY WITHIN A CARING
COMMUNITY

Abbeyfield is a National Charity which provides supported, independent and affordable accommodation within easy access of the city centre

We currently have vacancies

If you are interested and would like to have a look around call Carole Stirling, House Manager on

01905 352106

(mornings only)

or visit www.abbeyfield.com

Jobs Done

**Interior Exterior Property Maintenance
Painting - Decorating - Tiling - Brickwork
Fencing - Pruning - Paving - Decking**

No Job Too Small

Colin Davis

Tel: 07767 025 574

Office: 01905 452 950






La Fleur Florist

Weddings Funeral Tributes Everyday Flowers
Corporate Flowers Special Occasions
Garden Plants

Victoria Phelps
36 Woodstock Road
Worcester, WR2 5NE
Tel: 01905 421820 or 07842258936
lafleur@hotmail.co.uk
www.lafleurflorist.co.uk



Feel right
at home in
Red Hill

Shaw Redhill offers a safe and secure home from home environment; for elderly people including those living with dementia.

- Specialist dementia care
- Nurse led caring
- First class catering & freshly prepared meals
- Spacious, single rooms with en-suite facilities
- Tailored activity schedules
- Home from home environment

Care enquiry line

0800 902 0092

customercare@shaw.co.uk

www.shaw.co.uk



Are you, or is someone you know, struggling with any of the following?

- ◇ Housework
- ◇ Getting washed or dressed
- ◇ Shopping
- ◇ Preparing food
- ◇ Taking medication
- ◇ Having time to yourself when someone depends on you

If so we can help!

We can support you in your own home, at reasonable cost, to help you with those things you are struggling with. All our staff have references, full training and a current DBS (CRB). We provide a bespoke service to help you remain independent in your own home. Call Karen for a no obligation chat on **01905 769929**

We are registered and inspected by Worcestershire County Council and CQC.

We are *LARGE* enough to provide and *SMALL* enough to care!



Domiciliary Care at Home

Contact

Tel:

01905 769929

Website:

www.trucareworchester.co.uk

Email:

karenspeak@btinternet.com

PHILIP TOMLINS LTD

The Funeral Director

A sympathetic and respectful service provided by a traditionally run business.

Every care and attention given.

Funeral Pre-payment Plan available.

WORCESTER

Telephone 422666


37 Bromyard Terrace

St John's

Members N.A.F.D.



Superb Organic Cleaning of Carpets, Curtains, Upholstery & Leather

Safe Organic Cleaning 

- Carpet and upholstery organically cleaned
- Oriental rug cleaning
- Curtains & mattresses deep cleaned
- Dust mite control
- Guardsman stain protection plans
- Spot & stain removal
- Anti-bacterial and anti-viral treatments available
- Leather cleaned and conditioned

Remove dust mites



Remove odour



Remove bacteria



For your free non-obligational quote call:

0808 144 8172

www.safeclean.co.uk

Safeclean[®]

The finishing care specialists from 

BEDWARDINE FUNERAL SERVICES

A COMPLETE & COURTEOUS 24 hr SERVICE

PERSONAL ATTENTION

HOME ARRANGEMENTS

PRIVATE CHAPEL of REST

DAIMLER FLEET

MONUMENTAL MASONS

FLORAL ARRANGEMENTS

GOLDEN CHARTER PRE PAYMENT PLAN

01905 748811



INDEPENDENT & LOCALLY OWNED BUSINESS

OFFERING

EXCELLENCE AS STANDARD

TO THIS COMMUNITY and SURROUNDING AREAS

1, St John's, Worcester WR2 5AE

SOME OF OUR CHURCH GROUPS

To avoid disappointment, in case the arrangements are different in any particular week, please contact the person shown before turning up at one of the groups.

BELLRINGING

St John's has a fine peal of eight bells. If you are interested in ringing, or learning to ring, please contact the Ringing Master, John Bower 07792 574554.

CHOIR

The choir practises on Thursday evenings and sings at most Sunday services. If you can sing (or are prepared to learn) do speak to the Choir Master, John Brierley, 358474.

MUSIC GROUP

This meets on Fridays in church at 7.30 pm to play contemporary Christian music, and provides music for worship on a regular basis. Contact Peter Yates, on 422565.

LITTLE LAMBS (TODDLER GROUP)

Birth to 4 years old and carers. Here at the church: Mondays 10.00 am to noon in term time. Free! Come and join the fun, or contact Amy Rees via the Parish Office.

BIBLES, BUMPS and BABIES

An informal bible study group. Contact Sarah Cottrill on 426257 for more details.

BIBLE STUDY FELLOWSHIP

Meets in the Burroughs room at 10 am every Wednesday for prayer and study. Contact Sylvia Render on 422654 for further details.

PARISH OFFICE

1a Bromyard Road
St John's, WR2 5BS
Tel: (01905) 420490

From the church car park, walk up the Bromyard Road side of the church to the green door.
Answerphone outside office hours.

e-mail: office@stjohninbedwardine.co.uk

Normally open for general enquiries and messages (please ring to check)

Monday: 10.30am to noon. Wednesday, Thursday, Friday: 10am to noon.

For booking baptisms and weddings: Please visit or telephone the office during the normal opening hours on Monday, Wednesday or Friday. Also open specifically for these bookings on the first Thursday of each month from 6.30pm until 7.30pm

Parish Website: www.stjohninbedwardine.co.uk

Group Website: www.westworcesterchurches.org.uk

The church of St John-in-Bedwardine is a registered charity, number 1152583.





Sunday services in the West Worcester Group, February 2016

	St. John's	St. Clement's	St. David's	St Michael's
7th February	8am Holy Communion (BCP) 10.30am Parish Eucharist with Children's Church 5pm Evensong (BCP)	11am Family Service	4pm Holy Communion	10.30am Holy Communion
14th February	8am Holy Communion (BCP) 10.30am Family Service with Children's Participation 5pm Café Church	9.30am Eucharist 11am Worship for Everyone	11.15am Morning Prayer	10.30am Holy Communion
21st February	8am Holy Communion (BCP) 10.30am Parish Eucharist with Children's Church 5pm Evensong (BCP)	9.30am Eucharist 11am Worship for Everyone	4pm Holy Communion	10.30am Morning Prayer
28th February	8am Holy Communion (BCP) 10.30am Parish Eucharist with Children's Church 5pm Service of Wholeness and Healing	9.30am Eucharist 11am Worship for Everyone	6.30pm Celebration for Patronal Festival followed by refreshments.	10.30am Holy Communion

The information above is correct at the time of going to press, but please watch the weekly church newsletters and website for the latest information.