



*St John-in-Bedwardine  
Parish Magazine*

OCTOBER 2013

40p



*“For the beauty of the earth”*

## WHO'S WHO – ST JOHN'S CHURCH OFFICERS

<b>Churchwardens</b>	Margaret Morris Gordon Templeton gordtemp@btinternet.com	426153 749025
<b>Verger</b>	Catherine Templeton	749025
<b>PCC Lay vice-chair</b>	Sue Bale	423257
<b>Secretary</b>	Graham Evans	428667
<b>Treasurer</b>	John English	427822
<b>Stewardship envelopes</b>	Irene Allen	422684
<b>Estates Manager</b>	Brian Askew brian.askew@stjohninbedwardine.co.uk	424811
<b>Parish Administrator</b>	Liz Edwards office@stjohninbedwardine.co.uk	420490
<b>Education &amp; Heritage Officer</b>	Philip Evans edofficer@stjohninbedwardine.co.uk	428667
<b>Child Protection Officer</b>	Jane Askew	424811
<b>Pastoral Care Coordinator</b>	Sylvia Render sylvia.render@talktalk.net	422654
<b>Press Officer</b>	Philip Evans pressofficer@stjohninbedwardine.co.uk	428667
<b>Organist &amp; Choirmaster</b>	John Brierley	358474
<b>Music Group</b>	Peter Yates pjyates194@btinternet.com	422565
<b>Ringing Master</b>	Nicki Sysum	
<b>Church Flowers</b>	Eileen Cantrill Di White	422579
<b>Magazine Editors</b>	Sue & Graham Evans magazine@stjohninbedwardine.co.uk	428667
<b>Magazine Distributor &amp; Treasurer</b>	Philip Evans pjevans@physics.org	428667

---

### COVER PICTURE

NASA image by Reto Stöckli, based on data from NASA and NOAA. Instrument: Terra - MODIS (Earth Observatory: Twin Blue Marbles); Public domain, via Wikimedia Commons.

---

The church of St John-in-Bedwardine is a registered charity, number 1152583.

## PASTORAL LETTER FROM BISHOP JOHN

The Church is not an end in itself. The Church is God's gift to the world which is called to be an effective sign of God's Kingdom. God's mission is to reconcile the whole creation to himself in Jesus and inaugurate the reign of God. Jesus's first words in his ministry were 'Repent and believe the good news: the Kingdom of God is at hand'. As Christians, we are called to be those who both hear and proclaim that message, becoming agents of the transformation of the world according to God's loving purposes in Christ. The mission and ministry of the Church should be seen in the light of this relationship between the Church and the Kingdom.

What does the Kingdom look like? In it Kingdom values prevail – values of love, compassion, justice and freedom. Our churches should be places where the Kingdom is our core conversation, where these Kingdom values are evident. Churches should be known for their dedication to embodying these values in our communities.

+ *John*



The Kingdom People vision has been adopted by the Diocese of Worcester through the Bishop's Council and Diocesan Synod following very wide consultation in the Dioceses arranged through a '2020 Vision group' established by Bishop John. Its task was to discern God's will for His mission in the Diocese as we move towards 2020 and beyond. The vision is for a church which enables its people to be:

- Deeply rooted in prayer and study of the scriptures
- Renewed and transformed by regular worship
- Equipped to witness to the gospel of love, compassion, justice and freedom
- Dedicated to helping children, young people and young adults to belong and be nurtured in faith
- Devoted to growing deeply in discipleship, offering our time and talents and money to God
- Resourced and released to minister to others
- Ready to engage with and serve our community
- Committed to making our buildings fit for purpose as a spiritual and community resource.

See pages 20 and 21 for more on each of these eight aspects of the Kingdom People Vision.

---

## A WORD FROM THE EDITORS

Welcome to our October issue. For our theme this month we've selected the Earth and the Harvest. The earth is big, but it's also very small, as witness the photograph below. Harvest is about gathering in and we hope that Bishop John's message about Kingdom People, and the Kingdom People centre spread will help us all gather ourselves and move forward with God through this vision.

Our historical Christian figure is St Isidore, the Patron Saint of farmers, who shows how it is possible to balance spiritual life and earthly commitments. Something many of us struggle with!

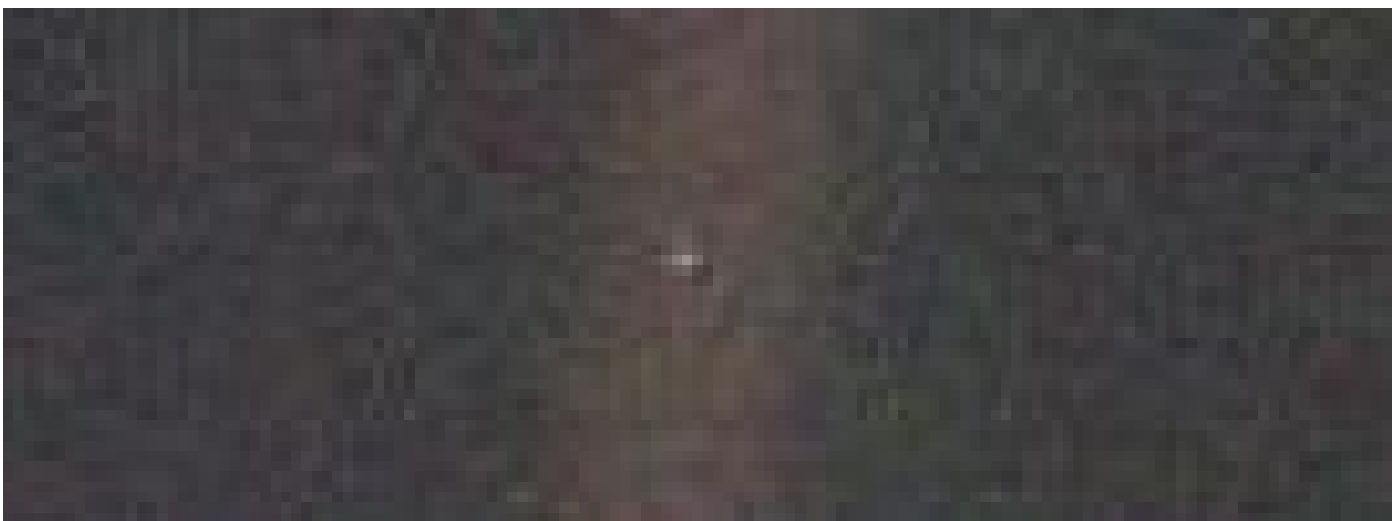
In the harvest season we pray that you will all find inspiration from the beauty of the earth and the knowledge of God's goodness in giving us the marvellous Pale Blue Dot.

*Graham and Sue Evans*

---

## PALE BLUE DOT

Below is an image of earth taken from Voyager 1 when it was four billion miles from earth (beyond the orbit of Uranus). The light streak behind the earth is scattered light from the sun because (from Voyager's viewpoint) the earth was very close to the sun.



The late astronomer Carl Sagan eloquently tried to express how he felt about this photo in his book *Pale Blue Dot*:

Look again at that dot. That's here. That's home. That's us. On it everyone you love, everyone you know, everyone you ever heard of, every human being who ever was, lived out their lives. The aggregate of our joy and suffering, thousands of confident religions, ideologies, and economic doctrines, every hunter and forager, every hero and coward, every creator and destroyer of civilization, every king and peasant, every young couple in love, every mother and father, hopeful child, inventor and explorer, every teacher of morals, every corrupt politician, every 'superstar', every 'supreme leader', every saint and sinner in the history of our species lived there — on a mote of dust suspended in a sunbeam.

## DATES FOR OCTOBER 2013

**Unless otherwise stated, the venue for all the events below is  
St John's Church, or one of the church rooms.**

**See  
page**

**Sunday 6<sup>th</sup> October:** Nineteenth Sunday after Trinity

See the back cover for Sunday services on this day

**Thursday 10<sup>th</sup> October:** Paulinus, bishop, missionary 644

2.00 p.m. Thursday at Two (Blakefield Room)

**6**

**Saturday 12<sup>th</sup> October:** Wilfrid, bishop, missionary, 709.

7.30 p.m. Philomusica Chorus & Soloists.

**13**

**Sunday 13<sup>th</sup> October:** Twentieth Sunday after Trinity – **Harvest Festival**

See the back cover for Sunday services on this day

**Wednesday 16<sup>th</sup> October:** Nicholas Ridley, Hugh Latimer, bishops, martyrs

7.00 p.m. Licensing of Rev'd Phillip Bradford to serve in the West  
Worcester Group of churches.

**Saturday 19<sup>th</sup> October:** Henry Martyn, translator, missionary, 1812.

6.00 p.m. Family Beetle Drive, including light supper

**9**

**Sunday 20<sup>th</sup> October:** Twenty-First Sunday after Trinity

See the back cover for Sunday services on this day

**Wednesday 23<sup>rd</sup> October**

7.00 p.m. Craft Evening "Countdown to Christmas"

**9**

**Sunday 27<sup>th</sup> October:** Last Sunday after Trinity

See the back cover for Sunday services on this day

### SERVICES TO NOTE

The County Harvest Service, organised by the Worcester Diocesan Chaplaincy for Agriculture and Rural Life will be held at the Cathedral on Sunday 6th October at 6.30pm.

The preacher is the Archdeacon of Worcester, the Venerable Roger Morris.

There will be a collection in aid of the farming charity, R.A.B.I (Charity Commission Registration Number 208858). Light refreshments will be available after the service.

Rev'd Phillip Bradford will be licensed to serve in the West Worcester Group of churches at St John's Church at 7.00pm on Wednesday 16th October. Please note that this is a change of time from the previously advised time of 7.30pm.

This year's Deanery Confirmation Service will be held at St John's at 5pm on Sunday 10th November. Bishop John will officiate. Please note that this is a change of date from the previous provisional date of 17th November.



## IN MEMORIAM

Ann Clarke	October 23 <sup>rd</sup> 1967
Percival C. Pearson	October 6 <sup>th</sup> 1970
George E. Griffiths	October 28 <sup>th</sup> 1976
John B. Smith	October 1 <sup>st</sup> 1990
Jack Render MBE	October 2 <sup>nd</sup> 1991
Albert J. Cake	October 8 <sup>th</sup> 1993
Florence A.C. Bosworth	October 30 <sup>th</sup> 1999
Gertrude Soley	October 29 <sup>th</sup> 2000
Neil Kenneth Pritchett	October 13 <sup>th</sup> 2003
Marjorie Fisher	October 29 <sup>th</sup> 2003
Juliana Maud Godwin	October 12 <sup>th</sup> 2010
Michael John Stuart Exon	October 24 <sup>th</sup> 2011
Barbara Good	October 25 <sup>th</sup> 2012

The above information is taken from the Memorial Book which is placed upon the Lady Chapel altar. Please do look at this beautiful and moving book.

## THURSDAY AT TWO



Are you bereaved or lonely? Come along and join us for a cuppa, cake and a chat.

We meet on the second Thursday every month, from 2pm in the Blakefield Room, St John's Church. Our next meeting is on Thursday 10<sup>th</sup> October.

Just come along; but if you want to speak with someone first then ring

Catherine (749025) or Sylvia (422654).

*Catherine Templeton, Sylvia Render*

## AUTHORISATION SERVICE FOR Authorised Lay Ministers

On Sunday 15<sup>th</sup> September four members of our congregation reached the end of their courses and were authorised for specific areas of lay ministry by the Bishop of Worcester at a service in the Cathedral. They are Philip Evans (on the right - Worship Leader), Emma Pound (Worship Leader), Sylvia Render (in the centre - Worship Leader) and Catherine Templeton (on the left - Pastoral Care). Sadly Emma was not well so she was not able to be at the service.



## FROM THE REGISTERS

**Baptisms, weddings and funerals which took place in August.**

**BAPTISMS:** *We welcome you into the Lord's family*

Cameron Christopher Charles Harris  
Arthur William Hobbiss  
Dainton Peter Terrance Trimm  
Queenie Lilee-Marie Gorman  
Ava Rose Beatrice Davidson  
Yvaine Elizabeth Florence Davidson

**WEDDINGS:** *Those whom God has joined together*

3<sup>rd</sup> August Chris Jenkinson and Laura Moverley  
Peter Davidson and Kalia Crawford  
Donald Harvey and Tina Connor

10<sup>th</sup> August Daniel Baddeley and Nicola Sysum  
Kevin Lawrance and Katherine Lamberton

24<sup>th</sup> August Christopher Curran & Natalie Marichal

**FUNERALS:** *Rest eternal grant unto them O Lord*

d. 4th August Alfred Payne  
d. 11th August Walter James

**FROM THE REGISTER OF SERVICES FOR AUGUST 2013 (4 Sundays):**

Communicants 290. Total attendance at all services 806.

---

## JUNIOR CHURCH

Every Sunday during the 10.30 service there is Junior Church. The children learn about bible stories, talk about how they can help others and many other topics. We create pictures and

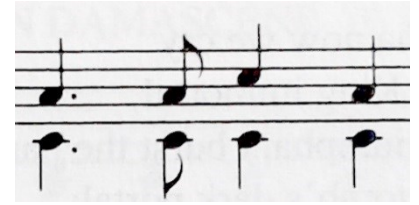
crafts to support what we learn. Recently we had one of our sessions looking at parts of the church and looked at the outside of the building. The children had a picnic and created their own stained glass windows.

Do come along and join us. If you feel you would like to come as a helper please come along and see what we do.



## NOTES FROM THE CHOIR

There are many well-known hymns that yet only have an outing once a year. The wonderful hymns we sing at Harvest are some such. 'Come ye thankful people come' is a good example. The tune was written by George Elvey in



1858 and is set in the uplifting key of F major. It is exceptionally well composed, lying well with most people's vocal range and there are rich harmonies for the lower voices in the choir to get their teeth into. For us upper voices in the choir and for the congregation, the tune contains enough repetition to make it easy to pick up and yet has sufficient variety to make it interesting to sing. It just begs to be sung out with real resonance and energy.

It is the words though that, when joined with the rousing music, make such an impact at this time of year. Written by Henry Alford there are many images of the countryside and the gathering in of the crops. At first glance the words, written in 1844 may seem old fashioned. For many people these days, their landscape is the town not the country. Even those who enjoy a more rural existence are used to modern farming methods and certainly a 'garner' is not a word with much currency today! The images though of God providing for us on earth and then drawing us to him in His heavenly home as we become the harvest are abiding ones and remind us of how we are generously given both ordinary bread and bread of heaven. So, even though we may only sing this hymn once a year, it contributes enormously to ensuring that Harvest is a very special time of celebration.

*Luise Horrocks*

---

## FRIENDS OF ST JOHN-IN-BEDWARDINE CHURCH



We all talk about the Village in the City and the Church is at the heart of this village. St. John's Church is a Grade 2\* listed Norman building. This means that there is always something that needs to be done to keep the building in good condition. We have learnt from experience that we need to constantly spend money on the building to avoid enormous repair bills.

We have formed a 'Friends of St John in Bedwardine Church' group, whose sole purpose is to help fund the upkeep of the building. If you are interested in joining us please telephone the Parish Office (01905 420490).

In return for becoming a Friend of St John in Bedwardine you will be invited to a function that will be free for a Friend and sent a yearly update.



## Fun and Fund Raising at St John's



- Saturday 28 September Quiz Night 7.00pm £3.50 per person.
- Saturday 12 October Philomusica Concert 7.30pm (see main advert on page 13 for more details)
- Saturday 19 October Family Beetle Drive 6.00pm.  
Including a light supper. £4.00 each.  
Tel 424811 to book.
- Wednesday 23 October Craft Evening 7.00pm - 9.00pm  
Countdown to Christmas £5.00 including all materials.
- Saturday 9 November Bridge Day 11.00 -3.00  
£10.00 including lunch. Tel 749025 to book.
- Wednesday 20 November Craft Evening 7.00pm - 9.00pm  
Make your own Crackers £5.00 including all materials.
- Saturday 23 November CHRISTMAS FAYRE 11.00am - 3.00pm  
Stalls available for hire. Come and see Santa.

Check the Church noticeboards for more details about our events. Further details from Worcester 423257, 749025 & 424811

### Can you help?

Do you have a craft that you would like to share with our craft group?

We make something in each session to get a taste of that particular craft. We are looking for ideas for each session next year. If you would like to come and share your craft with us please telephone 424811.

---

### **FUNDING FOR NEW CHURCH SOUND SYSTEM**

For many months now, on an intermittent basis, the sound quality during services and at other times has been very poor detracting from our worship. After consultation the PCC made the replacement of the system its top priority for this year. Your help would be greatly appreciated if you feel able to donate towards the amount of £10,000 to £11,000 that we need to raise for this. If you are able to help please contact me.

*John English, PCC Treasurer*

---

## PCC MEETING 13<sup>th</sup> August 2013

Sue Bale (Lay Vice Chair) opened with a prayer. 10 members were present.

Under **Matters Arising from the Minutes**, the Vicar reported that Liz Edwards has been appointed as our new Parish Administrator. She will start at the beginning of September and have one week's overlap with Judy Prangnell. Graham Evans reported that we are now a registered charity, number 1152583. We must state that we are registered on any printed or written request for money.

Under **Worship, Mission and new services**, The Vicar said he felt that the new principal service time had worked out quite well. He would like to hold off launching 'Worship for All' at St John's until January so that Phil Bradford could be involved in creating it. We want to get the "All" bit right and if we do we will not need a communion service in the evening, so there should be no need to change the Sunday evening service time or format.

The PCC received a report "Reviewing Welcome" which looked at our Church in the eyes of some people who had recently joined us. This contained a number of detailed recommendations. The PCC accepted the report in principle and referred the detailed consideration of the actions to the Standing Committee. The Vicar thanked Philip Evans for all his work in compiling this report.

Under **Children and Schools**, the Vicar reported that the children's corner had been renewed and redecorated by Amy and Chris Rees and recorded his thanks to them. He reported that the Friday church toddler group is now being run by Zoe Adams, who is keen to link in to our other children's activities.

The Vicar said that he felt that we should have an away day for all members of the congregation to re-assess our priorities; perhaps in early March. There was general assent to this.

Under **West Side collaboration**, there was a general discussion about the priorities in deploying Phil Bradford, the new Assistant Vicar, when he arrives in October. Building up our work with children and the toddler group was mentioned.

The PCC restated its agreement that ALMs from other parishes may lead worship in St John's parish, and agreed, subject to certain provisos, a request for loan of our 'Children's Altar' by St Clements CofE School to use the altar in school. It was reported that our application to the Diocese for a Transitional Grant (supporting the Worship for All services, and the Team Office) has been approved.

Under **Finance and Operations**, written reports had been received from a number of PCC committees. Highlights from the written and verbal reports included:

- The Treasurer distributed an August financial update and answered questions. His summary of the position was that it looks okay as income is down on budget, but costs are down more.
- The Fund Raising Committee reported on their on-going and future events and development of the Friends of St John's.
- In response to the Accommodation Committee report: The PCC agreed to make an appeal to the congregation for funds for the new Sound System, and then approach the Feoffees for a grant and/or loan; it was agreed to try a contract cleaning company instead of replacing the church cleaner; it was agreed to apply for a faculty to remove the trip fence in the churchyard.
- Under Correspondence, the Secretary outlined recent correspondence which had originated from the Archbishop of Canterbury about the need to check toilets before the building was vacated. This followed an incident in London where someone died from hypothermia after being trapped in a disabled toilet over a weekend. Our policy is already that toilet doors should be left open.

The meeting closed at 10.20 p.m. with all saying 'The Grace'.

*Graham Evans, PCC Secretary*

## **CHILDREN AND FAMILIES WORKER**

At our previous PCC meeting the PCC accepted the Vicar's recommendation that seeking to establish a Children and Families Worker should no longer be the mainstay of our Children and Schools policy as we had not quite managed to get enough funding to get this off the ground. He asked us to print a little more background about the work which had gone on and to acknowledge the work of the mini-committee involved in this:

'A small committee had been exploring the possibility of a Children and Families Worker. Around 60% of the necessary funding had been obtained, but not quite enough to guarantee going ahead. However, the process of identifying the need for a worker has established many contacts and relationships which are proving very fruitful, and we now have links with the YMCA, Tudor Way Children's centre, the Green Centre, and the university, all of which are bearing fruit. I feel this had been a worthwhile exercise, and I am grateful to all involved.'

## **OUR THANKS TO JUDY PRANGNELL**

Judy has now finished in her role as Parish Administrator and handed over to Liz Edwards. Our thanks go to Judy for all her hard work over the last two years: she has worked with dedication and good humour to establish and develop the role of Parish Administrator. She will be sorely missed as an invaluable member of our admin team, and we owe her a tremendous debt of gratitude.

*Chris Stuart*

## 2014 PROMISES AUCTION

In late Spring 2014, the fund raising team is planning to hold a Promises Auction. This will be an exciting event that can raise a substantial amount of money for the chosen charities, which, on this occasion, will be St Richard's Hospice and St John's Church.

The idea is that individuals, companies and local celebrities promise to do or provide something and that promise is then auctioned to the highest bidder. We hope to be able to offer dozens of promises for auction: for instance meals out, golf outings, housework, ironing, baby-sitting, private tutoring, music lessons, gardening, chauffeuring for a special event, baking a cake for someone – the possibilities are endless!

For the event to be successful we need YOUR help! Can you promise to do something? Or maybe you know a local celebrity or have a contact at a local business that could offer to do something that can be sold? And of course we will need you to come on the day and bring along as many people as you can, to buy in the promises!

So, please put on your 'thinking caps' and let's see how many different ideas and promises we can come up with.

Please feel free to chat with one of us about your ideas and email or write to me with your promise.

*Catherine, Jane and Sue. Contact us on 01905 749025 or at [cathtemp@btinternet.com](mailto:cathtemp@btinternet.com)*

---

### LIZ EDWARDS – ABOUT ME

I am 44 years old and live in Callow End with my husband Mark and our 3 children who are aged 7, 8 and 9. I also have a 21 year old stepdaughter who is at Wolverhampton University. I am a keen Long Distance Walker, enjoy visiting St John's Sports Centre, body boarding at Croyde Bay, reading and spending time with my family.

I have worked as an Administrator for Revd David Sherwin at Martley for 5 years and Revd John Sumner at Clifton for nearly 3 years. I am also the Secretary to the Chaplaincy for Agriculture and Rural Life (CARL) Committee, a position I have also held for 5 years.

I am very much looking forward to working as Administrator for St John in Bedwardine and facing the challenges that a more suburban church will bring.

I am hoping to be in the Parish Office most Monday, Wednesday and Friday mornings. Please feel free to pop in and have a chat and introduce yourself, as I am looking forward to getting to know everybody.





Philomusica Chorus & Soloists, conductor Linda Parsons,

Performing works by French composers including Gounod, Faure and Durufle

## French Connection II

at St John's in Bedwardine on

Saturday 12<sup>th</sup> October 2013 at 7.30pm

Admission £8. Accompanied children under 16: free

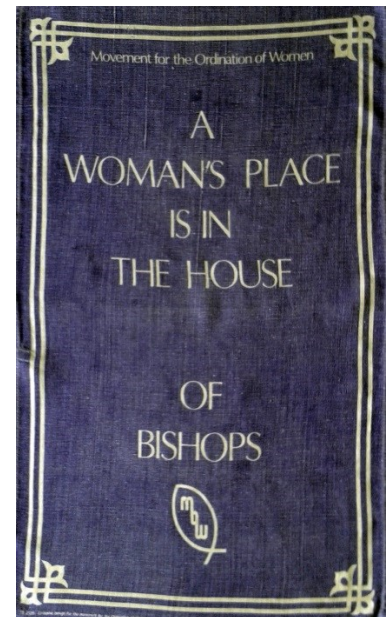
Tickets from 01905 820140, [tickets@philomusica.org.uk](mailto:tickets@philomusica.org.uk) or on the door

---

### WOMEN BISHOPS?



In our last issue, we reported that General Synod has this summer reaffirmed its commitment to women bishops. Auriol Pakington shows what she thinks about the matter!



---

### GROUNDS MAINTENANCE

A small band of volunteers met in September for the first “Grounds Maintenance” morning. We started at 10am, had a break at 11am and finished at noon. We hacked at the car-park hedge and trimmed the shrubs outside the Parish Office. We will meet next on Saturday 2nd November to trim the hedges and overhanging branches in the car-park. If you'd be willing to help either with tidying or making drinks or taking bags to the tip, please let me know

*Philip Evans*

## CHRISTMAS BEGINS WITH CHRIST

Following survey findings which reveal knowledge of the Christmas story is fading, leading denominations are to unite this autumn to reverse the trend and focus on 'saving Christmas'.



The Christmas Starts with Christ Campaign will run from 1st December to Christmas day. Resources available include a new free-to-use logo, specially produced Christmas cards, a chocolate advent calendar with a copy of the Christmas story in the box and a national advertising campaign using posters and radio ads.

### **A turning point**

It might be difficult to believe, but knowledge of the Christmas Story is fading. Just 12 per cent of adults know the nativity story; and 36 per cent of children do not know whose birthday is being celebrated during the festival. Christmas is being lost to secularism and the trend is for this to get worse.

Some 51 per cent of people now say that the birth of Jesus is irrelevant to their Christmas. This is a tipping point. Christmas is becoming simply ... 'mas'; a consumer-fuelled and family-filled happy holiday which is meaningless - albeit enjoyable.

A movement made up of some of the nation's leading Christian groups, including the Church of England, the Evangelical Alliance, and the Children's Society, is coming together because they recognise something must be done.

Leading the campaign is ChurchAds.net - the group behind the annual Christmas advertising poster campaigns. This year, recognising the urgency and importance of bringing the Church together to save Christmas, the group has taken a new direction. Part of this will be the first ever nationwide Christmas Starts Sunday on 1 December which kicks off the campaign and starts Advent.

Francis Goodwin, of ChurchAds.net, said: "Christmas is such an important part of the Church calendar and it is a time when Christians shine light in their communities. But the good news is being lost. We can't sit back and let that happen. We cannot let the nation lose the real meaning of Christmas; and we are passionate about bringing the Church together for this cause to remind everyone that Christmas Starts with Christ."

Church leaders are among those who have put their support into the campaign. Arun Arora, director of communications at the Church of England, said: "At Christmas time thousands of churches around the country do a huge amount to carry the Christmas story into their local communities, through word and deed. The vision for the Christmas Starts with Christ campaign is to use a common logo to join the dots of these activities and project a powerful message to our entire nation that the reason for the season is the birth of Jesus.

"The logo is available for use free of charge, and the more churches that use it the greater the chance that we can cause the 51 per cent of people who say 'the birth of Jesus is irrelevant to my Christmas' to think again!"

If you would like to find out more about the campaign or help save Christmas, visit <http://www.christmasstartswithchrist.com>



## **KINGDOM PEOPLE DEVELOPMENT OFFICER**

The Rev'd Chris Worsley has been appointed as the Kingdom People Development Officer for the Diocese of Worcester. The main purpose of this new part-time, two-year post will be to establish and train a support network for parishes across Worcestershire and Dudley as they seek to implement the Kingdom People vision for our churches which has been outlined by Bishop John.

Chris has moved to Worcestershire from the Diocese of Ely with her husband, the Rev'd Richard Worsley, who is Rector of Elmley Castle, Bricklehampton and the Combertons.

In Ely, Chris was Ministry Officer with particular responsibility for the development of Lay Ministers. She has also worked in parish ministry and been a hospice chaplain and was made a Canon of Ely Cathedral.

She said: "Much of my previous role was about working alongside parishes and I really enjoy working with churches to develop a vision of how they can best serve God in their communities." Chris hopes to build on this earlier experience as Kingdom People Development Officer in training facilitators to accompany parishes on their journey to become more focused on God's Kingdom. She will also be working directly with parishes as a 'critical friend'.

Bishop John said: "This appointment is a crucial one in enabling our 'Kingdom people' vision to become a reality. Chris will help the people of our churches become beacons of God's 'Kingdom values' of love, compassion, freedom and justice in their communities. These are the values of God's kingdom and it is our happy task to do all we can to make them prevail. Chris's great gifts and very relevant experience make her the perfect person for this role."

Chris was licensed to her new role at a service for Authorised Lay Ministers in Worcester Cathedral on Sunday 15 September. She is looking forward to visiting churches and deaneries and would appreciate invitations to talk at PCC meetings and Deanery Synods about her new role. Training for facilitators will begin towards the end of the year.

## TEEN MEETS GOD – SAM’S STORY

Last month we met Luke, one of the co-founders of the website [www.forchristianteens.com](http://www.forchristianteens.com). This month we meet Sam, 16, the other co-founder:

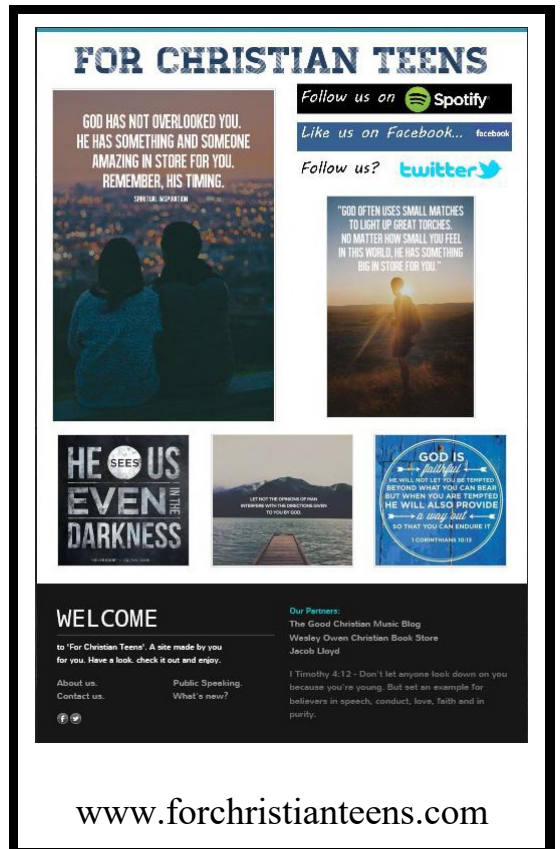
I was raised in a Christian family, so I decided to follow Jesus at an early age. In my younger years of high school though, peer pressure really hit me. I was forever in trouble, and I drifted away from God. As I got older, with encouragement from leaders and friends around me and the aid of a couple of Christian camps, my faith was challenged and it was then that I started to see that God was someone who I could relate to and who was with me in all I did.

I started to change my behaviour, stopped hanging round with the wrong people and focused on what God wanted for me. This resulted in me leaving people behind, and then being bullied. I withdrew

and prayed to God that things would improve... and they did! I felt it was right to be baptised at 13, and began to find out more about Jesus, as I decided to own my faith fully for myself. Jesus continues to blow me away more and more as I learn about him.

In October 2012 my youth leader Emily died at 22, which was a massive blow. However, it also made me realise that I had to make the most of my time and my gifts. After that I was praying to God for direction, and I believe he gave me the idea of creating a website for Christian teenagers, to support them, and show them they're not alone. I don't believe anything like this has been around before. The website is really taking off, and it's amazing to see young Christians being influenced and encouraged and more importantly growing with God. It's an exciting journey, but one that has only just started. I have no idea where I will even be in a few months, but I do know I have to tune into God, and keep listening to where he wants me to go.

Sam made a decision to follow Jesus. He prayed, asking God to forgive him for the things he does wrong, and then he promised to live God's way. To find out more about the Christian faith, visit <http://www.lookingforgod.com>



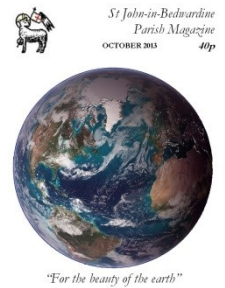
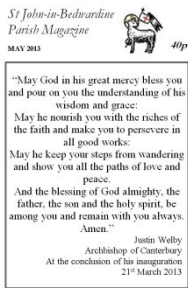
*Courtesy of Parish Pump*

## ST JOHNS TODDLER GROUP

We meet every Friday in the Blakefield Room at the back of the Church, (Bromyard Road side) from 10am to 12.00 mid-day. Please come along and see us.

*Zoe Adams (07921829892)*





## ST JOHN'S PARISH MAGAZINE

We publish a Parish Magazine each month, except August. The magazine contains items about Parish news, events and other articles.

We have an extensive archive of our historical Parish Magazines stretching back to the 1870s. If you'd like to obtain a particular copy or view a copy from the archive, please email [edofficer@stjohninbedwardine.co.uk](mailto:edofficer@stjohninbedwardine.co.uk)

The magazine costs 40p to purchase and can be obtained from the back of church. Subscriptions are available at the discounted price of £4 per year. **We encourage you to subscribe as this means that we know more closely in advance how many copies to print and this makes things easier for our printing team.**



### Why not Subscribe to the Parish Magazine?

- You only need pay once a year.
- You'll only pay £4 a year (rather than £4.40).
- You'll have a guaranteed copy.
- It also helps us know how many to print!

Plus, current HMRC rules allow subscriptions to charity magazines to be Gift Aided, meaning the church will get an extra £1 without it costing you a penny more! *Please tick one of the boxes below and fill in the details overleaf.*

- I am happy to pick up my magazine from the church** (*subscribers' magazines are put out in envelopes along with the bundled copies*).
- I need my magazine to be delivered.** (*Free delivery may be available in the Parish. If free delivery is not available, Postage and Packing is charged at £6. Please complete your details, return this form and someone will get back to you to let you know if free delivery is available*).

**Please complete your details overleaf and return to:  
Parish Magazine, The Parish Office, 1a Bromyard Road, Worcester. WR2 5BS**

FROM THE PARISH MAGAZINE ARCHIVES

November 1950

ST. JOHN'S BOYS' SCHOOL SPORTING  
ACHIEVEMENT

THE St. John's Boys' School Cricket Team—a hitherto little known group of keen young cricketers—have had a very happy and successful season.

They have won every match they have played, and they have secured the prize bats given for the highest batting averages and best bowling in Worcester.

Graham Stone—who is also one of our choristers—gained the highest batting average, and Dennis Bollen came out on top as the best bowler.

This little team has earned a high reputation for good cricket, and their good conduct and splendid achievement reflects great credit on the School. Our congratulations to the boys and to Mr. Langley who is responsible for the school sports.



**Your details:**

Title: .....Initial: ..... Surname:.....

Address:.....

.....Postcode:.....

I enclose a cheque made payable to **St. John's Church** for £.....

*giftaid it*

I want St. John-in-Bedwardine Parish Church, charity number 1152583, to treat the enclosed donation as a Gift Aid donation.

**You must pay an amount of Income Tax and/or Capital Gains Tax at least equal to the tax that the charity reclaims on your donations in the appropriate tax year (currently 25p for each £1 you give).**

Signed:.....Date:.....



## ST ISIDORE

St. Isidore is the patron saint of farmers and brick layers. He was a Spanish day labourer known for his piety toward the poor and animals.

Isidore was born to poor but very devout parents in Madrid, in about the year 1070. Isidore spent his life as a hired hand in the service of a wealthy landowner on a farm in the city's vicinity. He shared what he had, even his meals, with the poor. Isidore died on 15 May 1130, at his birthplace close to Madrid.

Every morning before going to work, Isidore was accustomed to hearing Mass at one of the churches in Madrid. One day, his fellow labourers complained to their master that Isidore was always late for work in the morning. Upon investigation, so runs the legend, the master found Isidore at prayer whilst an angel was doing the ploughing for him.

On another occasion, his master saw an angel ploughing on either side of him, so that Isidore's work was equal to that of three of his fellow labourers. Isidore is also said to have brought back to life his master's deceased daughter, and to have caused a fountain of fresh water to burst from the dry earth to quench his master's thirst.

One snowy day, when going to the mill with corn to be ground, he passed a flock of wood-pigeons scratching vainly for food on the hard surface of the frosty ground. Taking pity on the poor animals, he poured half of his sack of precious corn upon the ground for the birds, despite the mocking of witnesses. When he reached the mill, however, the bag was full, and the corn, when it was ground, produced double the expected amount of flour.

Isidore's wife, Maria, always kept a pot of stew on the fireplace in their humble home as Isidore would often bring home anyone who was hungry. One day he brought home more hungry people than usual. After she served many of them, Maria told him that there simply was no more stew in the pot. He insisted that she check the pot again, and she was able to spoon out enough stew to feed them all.

King Philip III of Spain was cured of a deadly disease after touching the relics of the saint, and replaced the old reliquary with a costly silver one.

The story of St. Isidore is a reminder of the dignity of work, and that ordinary life can lead to holiness. Legends about angel helpers and mysterious oxen indicate that his work was not neglected and his duties did not go unfulfilled. St. Isidore's life demonstrates that: If you have your spiritual self in order, your earthly commitments will fall into order also.

*Graham Evans, based upon material from Wikipedia*

The Church is not an end in itself. The Church is God's gift to the world which is called to be an effective sign of God's Kingdom. God's mission is to reconcile the whole creation to himself in Jesus and inaugurate the reign of God. Jesus's first words in his ministry were 'Repent and believe the good news: the Kingdom of God is at hand'. As Christians, we are called to be those who both hear and proclaim that message, becoming agents of the transformation of the world according to God's loving purposes in Christ. The mission and ministry of the Church should be seen in the light of this relationship between the Church and the Kingdom.

What does the Kingdom look like? In it Kingdom values prevail – values of love, compassion, justice and freedom. Our churches should be places where the Kingdom is our core conversation, where these Kingdom values are evident. Churches should be known for their dedication to embodying these values in our communities.

As Kingdom People, our vision is for a Church which enables its people to be:

### **1. Deeply rooted in prayer and study of the scriptures**

We are made for relationship with God in Jesus. Deepening that relationship must be our first priority. This happens through prayer and study of God's Word. It is, further, in God's power, not our own, that we must seek to be instruments of his Kingdom. We must always remain connected to Jesus, the true vine, in prayer and study of the scriptures for, without him we can do nothing.

### **2. Renewed and transformed by regular worship**

Prayer needs to be not only individual but corporate. From the very beginning Christians met together on the first day of the week for the breaking of the bread and for the prayers. Churches should be schools of virtue in which we seek God's grace and encourage one another in faith, hope and love. Our relationship with the true vine must be nurtured by regular praise and receiving of holy communion.

### **3. Equipped to witness to the gospel of love, compassion, justice and freedom**

Jesus commanded his followers to go and make disciples of all the nations. If our faith is important to us we shall want to share with others the good news of God's healing and forgiving power. We do not need to be great theologians to describe to others what God has done for us in our lives. There is nothing more powerful than testimony.

#### **4. Dedicated to helping children, young people and young adults to belong and be nurtured in faith**

Children and young people are not only the Church of tomorrow they are the church of today. Jesus showed preferential consideration for children and we must do the same. If we do not do so, not only will the future of our churches be in doubt, they will be impoverished in the present. We have much to learn from children and young people in our parishes and schools and much to offer to them.

#### **5. Devoted to growing deeply in discipleship, offering our time and talents and money to God**

Conversion is not a one-off but a continuous process. If we are to find the abundance of life which God yearns to give us in Jesus and share that life with others we need continually to turn to God. Becoming a disciple is a lifetime's task as we share ever more fully in his will for us. It happens through both grace and discipline. Discipleship entails not only commitment to the life of prayer, to study of the scriptures and to receiving the sacrament in public worship referred to above, it also requires sacrificial giving of our time, talents and money.

#### **6. Resourced and released to minister to others**

When Jesus proclaimed at the beginning of his ministry that the Kingdom of God is at hand he did not expect his listeners to sit about and wait for it to appear. He wanted them to embody it. Each of us within the body of Christ has God given gifts and a calling to witness and minister in Christ's name. We must ensure that we discern how God wants us to use our gifts in his service and seek his power to do so. There is no more fulfilling way to spend our lives.

#### **7. Ready to engage with and serve our community**

Healthy churches combine vibrant worship with service to their communities. In other words, they take both the first and the second great commandments of Jesus seriously by endeavouring to love both God and neighbour. As Christians we need to discern what God is already doing in our communities and join in to promote the Kingdom, doing all we can to show God's love. This will be by campaigning and working for structural justice as well as organising ourselves to deliver care and offering individual acts of kindness.

#### **8. Committed to making our buildings fit for purpose as a spiritual and community resource.**

Our churches are sometimes seen as a burden and some can be. However, if they are made fit for purpose, most can be a wonderful blessing both to worshipping communities and wider society. Too many churches are locked for all but a couple of hours a week when they could be a vital spiritual and community resource. We should seek to do what we can to enable them to be used to their full potential for the praise of God and the common good.

## BROCKHAMPTON ESTATE

Brockhampton Estate is an ancient and unspoilt estate offering 1,700 acres of traditional orchards and hedgerows, working farmland, woodland and a romantic 19th century designed parkland. There are miles of walks with breath-taking views across the surrounding countryside to the Malvern and Cleve Hills.



Sitting at the heart of the estate is the picturesque medieval manor house at Lower Brockhampton. Dating back to the late 14th century, the house is surrounded by a moat and is entered via a charming Tudor timber-framed gatehouse. The oldest surviving building on the estate is the Norman chapel which dates back to around 1180.

In the 1500s, the house was acquired by the Barneby family and stayed with them for the next 400 years. When the last male Barneby died in 1726, the estate went to his nephew, Bartholomew Richard Lutley, who later changed his name to Barneby around 1756. Bartholomew built a new house on top of the valley as was the fashion and then let the manor house to successive farming families who worked on the estate until the Trust acquired the house and estate in 1946.

Inside the house there are original paintings, antique furniture, and brassware displays from various periods of history. A room has been dedicated to the last owner of the property, Colonel Lutley, whose personal effects give the impression he has just left the room for a few minutes, including an assortment of bills, letters and old maps of the property.

The manor house is also a protected bat roost and home to three species of bat including the Pipistrelle, Brown Long-eared and the rare Lesser Horseshoe Bat. The estate also attracts lots of other varieties of wildlife including swallows that nest in the gatehouse and courtyard, butterflies and rare beetles and fungi.

Brockhampton Estate is open daily until 3 November and relies on a team of passionate and energetic volunteers to bring these stories to life for visitors. Volunteers work in a variety of roles including welcoming visitors to the estate; leading exciting tours; assisting with events; carrying out conservation work in the countryside and serving visitors in the shop and second-hand bookshop.

To find out more about volunteering at Brockhampton Estate just drop-in or get in touch. For further details please call 01885 482077 or email [brockhampton@nationaltrust.org.uk](mailto:brockhampton@nationaltrust.org.uk).

## ROOM HIRING AT THE CHURCH

The church has two meeting rooms and a large space in the church available for hire. All rooms have access to the church car park.

Blakefield Room	Suitable for up to 30 people: Fully fitted kitchen, including dishwasher; toilets, including one disabled toilet and a baby-changing facility; Tables and/or chairs.
Burroughs' Room	Suitable for up to 12 people. Drink making facilities and toilet.
The North Aisle	Suitable for 120 people seated theatre style or up to 48-64 seated around tables. Tables and/or chairs are provided. It is a large open area with plenty of electric sockets. It has been used to host exhibitions, meals and conferences.

All access to the church is level and therefore suitable for wheelchairs. A toilet for the disabled is available.

For more information, please email [hiring@stjohninbedwardine.co.uk](mailto:hiring@stjohninbedwardine.co.uk)

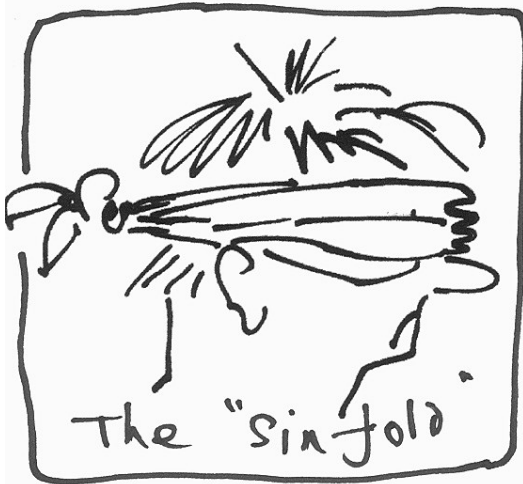
### OCTOBER PUZZLE

7		4	5		9		8	3
		1	2			4		
					1		7	6
2		7	6			5		9
	3		1		4		2	
5		8			2	3		4
4	7		3					
		6			8	7		
1	8		7		5	6		2

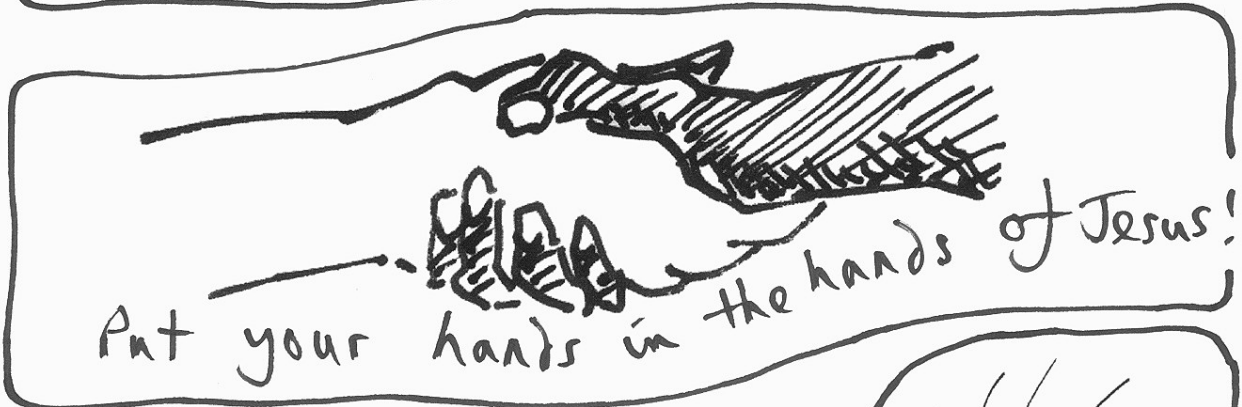
© 2011 KrazyDad.com

**The solution is on page 36**

# Bible Sketchbook



Get rid of that  
SINFOLD!!



Blindfolds are no fun. They block our eyes. That's what sin does—stops us seeing or experiencing the Kingdom of God. Call it a "sin-fold"!



But there is a remedy!  
Jesus says trust in him,  
repent of your sin, take His  
hand, be baptised.

He will wash your sin away  
and renew you with his  
Spirit!

The result? Sin-fold taken  
away and you are born  
again! Eternal life starts  
now! **Just DO IT!!**

Read more in **John 3: 1-18**

W.M.



## THE MAGAZINE

Articles on all aspects of Christian and parish life, letters, jokes, cartoons, puzzles and anecdotes from anyone are welcome for inclusion in the Magazine. Do contribute if you can. If you have a story to tell, please make contact; the more we learn about one another the better our understanding will be. What you think is important, but please add your name as anonymous contributions will not be considered.

Opinions expressed in this magazine are personal opinions of the authors concerned and may not represent the views of the editors, our PCC or The Church of England. Such material is offered as a source of debate or reflection.

Copy should reach us by Sunday, 13<sup>th</sup> October for the October edition. If you can, please use e-mail: [magazine@stjohninbedwardine.co.uk](mailto:magazine@stjohninbedwardine.co.uk)

If you wish to advertise in the Magazine please contact Sue Hussell on 01684 893397 in the first instance.

Sue & Graham Evans, Joint Editors



**Feel right  
at home in  
Red Hill**

Shaw Redhill offers a safe and secure home from home environment; for elderly people including those living with dementia.

- Specialist dementia care
- Nurse led caring
- First class catering & freshly prepared meals
- Spacious, single rooms with en-suite facilities
- Tailored activity schedules
- Home from home environment

Care enquiry line  
**0800 902 0092**  
[customercare@shaw.co.uk](mailto:customercare@shaw.co.uk)  
[www.shaw.co.uk](http://www.shaw.co.uk)

**Shaw care homes**  
wellness • happiness • kindness

Please mention the magazine when responding to advertisers

## How can we help?



### ❖ Handyperson Scheme

- Minor jobs: e.g. changing a light bulb, fitting shelves or minor plumbing.
- Labour: £5 per half-hour (*Free for those in receipt of Pension Credit*)



### ❖ Local Traders Directory

- A directory of local trades people recommended to us by older people for doing a good job at a fair price.



### ❖ Wellcheck

- A personal assessment & information signposting service for people over 50 who are starting to encounter difficulties.
- We help you remain independent for as long as possible.

### ❖ Social clubs & luncheon clubs

### ❖ Telephone Befriending



- A weekly telephone call to lonely and isolated older people.
- If you or someone you know would benefit from this, please let us know.

## Want some information or advice?

❖ Information & Advice Service

❖ Legal Advice Surgery

❖ Independent Financial Advice Surgery

If you are interested in any of our services, please give us a call and state the service you're enquiring about or pay us a visit:

**01905 724294 ❖ 9a/10 Mealcheapen Street**

*AgeUK is the new name for Age Concern and Help the Aged.*



# Smile Denture Clinic

## **Dentures that don't move, 100% guaranteed**

Dr Peter and his team of denture experts have more than 20 years experience in denture making.

### **You will benefit from:**

- Excellent fitting dentures
- Rock solid dentures
- An extremely natural look
- Non-Surgical facelift effect
- Difficult dentures cases solved
- Enjoyment in eating regained
- Ability to eat normal foods
- You will smile with confidence
- Revolutionary new denture technology

**Tel: 01905 887631**

No 1 Bromyard Road, St Johns, Worcester WR2 5BS

[www.smiledentalcareclinic.com](http://www.smiledentalcareclinic.com) • [info@smiledentalcareclinic.com](mailto:info@smiledentalcareclinic.com)

Opening hours Monday to Friday 8.30am to 6pm



# La Fleur Florist

Weddings    Funeral Tributes    Everyday Flowers  
Corporate Flowers    Special Occasions  
Garden Plants

Victoria Phelps  
36 Woodstock Road  
Worcester, WR2 5NE  
Tel: 01905 421820 or 07842258936  
lafleur@hotmail.co.uk  
www.lafleurflorist.co.uk



- ✓ *Prompt, reliable & friendly service.*
- ✓ *All types of flues & appliances cleaned.*
- ✓ *Cowls and Chimney Pots fitted.*
- ✓ *Fully qualified by the Guild of Master Sweepers and fully insured.*
- ✓ *Guild certificates issued after every sweep.*
- ✓ *Stove Installations/Chimney lining.*
- ✓ *HETAS Registered.*

**NO MESS                      NO DUST                      NO FUSS**



***Call Eddie***

***Tel. 07895 612915 / 01905 679950***





**HOME. There's no place like it.**

**Being able to live at home can be one of the most important comforts in an older person's life and because family and friends can't always be there, Home Instead Senior Care are here to help in your area.**

Our Award winning Services Include:

- Companionship
- Light housekeeping
- Local transportations and errands
- Meal preparation
- Convalescence support
- Shopping
- Personal care
- Specialist dementia and Alzheimer's care *and much more...*

For us nothing is more important than providing a convenient and reliable care solution that works for everyone, from an hour to full time cover.

**For an informal, no obligation chat to discuss your needs, OR if you feel you have the right qualities to become one of our CAREGivers please call: *Samantha Smith on 01905 420404.***



Please mention the magazine when responding to advertisers



# RELAX...

**...with the assurance of knowing that  
all your travel arrangements are in  
the safest possible hands.**

**Beach holidays, City breaks, Honeymoons,  
Weddings abroad, Adventure holidays, Ski, Cruise,  
Tailormade trips, Flight only, Car hire,  
Foreign exchange, Airport hotels and parking  
and much more...**

**Worcester Based Independent Travel Agent  
Contact ANNE LONG – 0845 058 7808**

**Email – [anne.long@travelcounsellors.com](mailto:anne.long@travelcounsellors.com)**

**Mobile – 0798 4420292**

**No extra or hidden fees to pay for booking through Travel Counsellors.  
Everything booked through Travel Counsellors is 100% financially protected  
for your peace of mind.**



Travel Counsellors ensures complete  
financial protection on every booking

**travel counsellors**



*Where will your conversation take you?*

Please mention the magazine when responding to advertisers

# Abbeyfield

WORCESTER



12 GREENHILL  
LONDON ROAD  
WORCESTER  
WR5 2AA

INDEPENDENT LIVING FOR THE  
ELDERLY WITHIN A CARING  
COMMUNITY

Abbeyfield is a National Charity which provides supported, independent and affordable accommodation within easy access of the city centre

**We currently have vacancies**

If you are interested and would like to have a look around call Carole Stirling, House Manager on

**01905 352106**

(mornings only)

or visit [www.abbeyfield.com](http://www.abbeyfield.com)



# R.A.Barley

## Electrical Services

Sockets • Lighting • Showers • Wiring  
Electrical Condition Reports • Smoke Alarms  
Security Lights • Fault Finding • Heating

**City & Guilds**  
Qualified



**01905 820545**



**07941 581330**

Free Estimates

No job too small

Call out service

[www.rabarley.co.uk](http://www.rabarley.co.uk)

**Brian Askew Lic. Ac., M.B.Ac.C.**  
**Traditional Five Element Acupuncture**

Member of the British Acupuncture Council

Established 1994

18 Stanmore Road  
Hanbury Park  
Worcester WR2 4PW

Tel: 01905 424811  
Home visits available

火  
土  
金  
水  
木



*Styling in the  
comfort of your  
own home!*

# KAREN'S

*Mobile Hairdressing*

**RELIABLE,  
FRIENDLY & WITH  
OVER 30 YEAR'S  
EXPERIENCE**

**01905 748863**





## YOUR PICTURE FRAMER

(Member of the Fine Art Trade Guild)

- We can frame almost anything
- Specialist computerised mount cutting
- No obligation advice available
- Latest techniques and top quality materials
- Home/Office visits available
- Computerised pricing – no guessing

[YOURPICTUREFRAMER.CO.UK](http://YOURPICTUREFRAMER.CO.UK)

[INFO@YOURPICTUREFRAMER.CO.UK](mailto:INFO@YOURPICTUREFRAMER.CO.UK)

We are also on Twitter and Facebook

01905 339 366 / 07730 539 168

Podiatrist/Chiropodist

State Registered

HPC No. 14966

## ***FOOT-NOTES UK***

Rachael Sharman

BSc (Hons), MChS, SRChS

Worcester Dental Practice


St John's Church

Worcester WR25BS

DiabetesAppointments: 01905 422530

General Foot CareMob: 07929 843 172

# Superb Organic Cleaning of Carpets, Curtains, Upholstery & Leather

Safe Organic Cleaning 

- Carpet and upholstery organically cleaned
- Oriental rug cleaning
- Curtains & mattresses deep cleaned
- Dust mite control
- Guardsman stain protection plans
- Spot & stain removal
- Anti-bacterial and anti-viral treatments available
- Leather cleaned and conditioned

Remove dust mites



Remove odour



Remove bacteria



For your free non-obligational quote call:

0808 144 8172

[www.safeclean.co.uk](http://www.safeclean.co.uk)

**Safeclean**<sup>®</sup>  
*The finishing care specialists from GREAT BRITAIN*

# Jobs Done

**Interior Exterior Property Maintenance  
Painting - Decorating - Tiling - Brickwork  
Fencing - Pruning - Paving - Decking**

*No Job Too Small*

**Colin Davis**

**Tel: 07767 025 574**

**Office: 01905 452 950**



# **TRUCARE**

## **Home Care Agency**

**in Worcester, Droitwich, Malvern  
& surrounding areas**

Offering help, and caring for you in your home with a friendly and respectful approach.

Services offered include

- Shopping / pension collection
- Cleaning
- Meal preparation & serving
- Administering / prompting medication
- Personal care – washing & dressing
- Sitting service whilst main carer has a break
- Light gardening, lawn mowing, handyman

We offer visits from as short as 15 minutes or up to 24 hour care. For an informal, no obligation chat to discuss your needs call -

**Karen on 01905 769929**

Male and female carers (C.R.B. checked)

Registered and regulated by The Commission for Social  
Care Inspection

And registered with the Local Authority

# PHILIP TOMLINS LTD

## *The Funeral Director*

A sympathetic and respectful service provided by a traditionally run business.

Every care and attention given.

Funeral Pre-payment Plan available.

### WORCESTER

Telephone 422666

37 Bromyard Terrace

St John's

Members N.A.F.D.



### PUZZLE SOLUTION

7	2	4	5	6	9	1	8	3
8	6	1	2	3	7	4	9	5
3	9	5	8	4	1	2	7	6
2	4	7	6	8	3	5	1	9
6	3	9	1	5	4	8	2	7
5	1	8	9	7	2	3	6	4
4	7	2	3	1	6	9	5	8
9	5	6	4	2	8	7	3	1
1	8	3	7	9	5	6	4	2

Please mention the magazine when responding to advertisers

# BEDWARDINE FUNERAL SERVICES

A COMPLETE & COURTEOUS 24 hr SERVICE

PERSONAL ATTENTION

HOME ARRANGEMENTS

PRIVATE CHAPEL of REST

DAIMLER FLEET

MONUMENTAL MASONS

FLORAL ARRANGEMENTS

GOLDEN CHARTER PRE PAYMENT PLAN

**01905 748811**



*INDEPENDENT & LOCALLY OWNED BUSINESS  
OFFERING*

*EXCELLENCE AS STANDARD*

*TO THIS COMMUNITY and SURROUNDING AREAS*

1, St John's, Worcester WR2 5AE



## St IGNATIUS feast day October 17th

Born in Syria, Ignatius converted to Christianity at an early age and eventually became bishop of Antioch. A tradition arose that he was one of the children whom Jesus had taken in his arms and blessed. Ignatius called himself 'God Bearer'.

Ignatius is responsible for the first known use of the Greek word 'katholikos' meaning universal and whole to describe the church, he wrote: "Wherever the bishop appears, there let the people be; as wherever Jesus Christ is, there is the Catholic Church.

In the year 107, the Roman Emperor Trajan visited Antioch and forced the Christians living there to choose between death and denying Christ. Ignatius would not deny his Lord and so was condemned to be put to death in Rome.



Ignatius bravely met the lions in the Circus Maximus in Rome; dying and living as a witness to his belief.

## LIONS in the BIBLE

Not just in the arena in Rome, there are quite a few lions mentioned in the Bible...

1. An angel shut the lions' mouths so that they couldn't eat him (Daniel, chapter 6)
2. Who will lead the lion, wolf, lamb, goat and calf? (Isaiah, chapter 11)
3. He killed the lions or bears that threatened his father's flocks (1 Samuel, chapter 17)
4. Who is like a roaring lion looking for someone to eat? (1 Peter, chapter 5)
5. He killed a lion on a day when it had snowed (2 Samuel, chapter 23)
6. The first creature was like a lion, what were the 2<sup>nd</sup>, 3<sup>rd</sup> and 4<sup>th</sup> creatures like? (Revelation, chapter 4)



**On which day do lions eat people?**  
Chewsdays.

**What did the lioness say to her cubs when she taught them to hunt?**



'Don't go over the road till you see the zebra crossing.'



1. Daniel 2. A little child 3. David 4. the devil 5. Benaiah, son of Jehoiada 6. A calf, a face like a man and a flying eagle.

## ST JOHN'S CLERGY

Vicar Rev'd Dr Christopher Stuart 01905 429773  
e-mail: [chris.stuart@orangehome.co.uk](mailto:chris.stuart@orangehome.co.uk)

## OTHER WEST WORCESTER GROUP CLERGY

Rural Dean Rev'd David Sherwin 01886 888664  
e-mail: [Davidwin56@aol.com](mailto:Davidwin56@aol.com)

Minister, St Clement's with St David's Rev'd Dr Christopher Stuart

Vicar of St Michael, Dines Green with Rev'd Robin Charles 01905 749995  
Crown East & Rushwick e-mail: [fr.robin@talktalk.net](mailto:fr.robin@talktalk.net)

## SUNDAY SERVICES

**This is the usual pattern. Please see the back cover for the actual services in October.**

8.00 a.m.	Every week	Holy Communion (BCP)
10.30 a.m.	Every week	Parish Communion with Children's Church
5.00 p.m.	1st & 3rd Sundays in Month Last Sunday in Month Other Sundays	Evensong (BCP) Healing Service Evening Prayer (said)

## WEEKDAY SERVICES

5.00 p.m.	Usually each day except Saturday	Evening Prayer
10.00 a.m.	Thursday (at St Clement's)	Holy Communion

## PARISH OFFICE

From the church car park, walk up the Bromyard Road side of the church to the green door.

Answerphone outside office hours

e-mail: [office@stjohninbedwardine.co.uk](mailto:office@stjohninbedwardine.co.uk)

Open for general enquiries and messages

Open specifically for booking baptisms and weddings

1a Bromyard Road  
St John's, WR2 5BS  
01905 420490

Thursday 10am to 12.30pm.  
Friday 10am to 11.30am.

Thursday\* 6.45pm until  
7.30pm.

\*Changed from Saturday to Thursday with effect from 1st September 2013.



Parish Website: [www.stjohninbedwardine.co.uk](http://www.stjohninbedwardine.co.uk)

The church of St John-in-Bedwardine is a registered charity, number 1152583.



## Sunday services at St. John's, St. Clement's, St. David's and St Michael's, October 2013.

	<b>St. John's</b>	<b>St. Clement's</b>	<b>St. David's</b>	<b>St Michael's</b>
<b>6<sup>th</sup> October</b>	8am Holy Communion (BCP) 10.30am Parish Communion with Children's Church 5pm Evensong (BCP)	9am Parish Communion 10.45am Worship for Everyone	6.30pm Evensong (BCP)	10.30am Parish Communion
<b>13<sup>th</sup> October</b>	8am Holy Communion (BCP) 10.30am Harvest Festival 5pm Evening Prayer (BCP)	9am Parish Communion 10.45am Worship for Everyone	11.15am Holy Communion	10.30am Parish Communion
<b>20<sup>th</sup> October</b>	8am Holy Communion (BCP) 10.30am Parish Communion with Children's Church 5pm Evensong (BCP)	9am Parish Communion 10.45am Worship for Everyone	11.15am Morning Prayer	10.30am Parish Communion
<b>27<sup>th</sup> October</b>	8am Holy Communion (BCP) 10.30am Parish Communion with Children's Church 5pm Service of Wholeness and Healing	9am Parish Communion 10.45am Worship for Everyone	6.30pm Holy Communion (BCP)	10.30am Parish Communion

**The information above is correct at the time of going to press, but please watch the weekly church newsletters and website for the latest information.**